

Mouse Monoclonal Antibody to BDH1

Order Information

Catalog#	30003	
Size/Concentration	100µl	50µl
Price(¥)	2180	1280

Description

BDH1 (3-hydroxybutyrate dehydrogenase, type 1), it is a member of the short-chain dehydrogenase/reductase gene family. This protein forms a homotetrameric lipid-requiring enzyme of the mitochondrial membrane and has a specific requirement for phosphatidylcholine for optimal enzymatic activity. It catalyzes the interconversion of acetoacetate and (R)-3-hydroxybutyrate, the two major ketone bodies produced during fatty acid catabolism.

Specification

Aliases :	BDH
Entrez GeneID :	622
Swissprot :	Q02338
clone :	1A5
WB Predicted band size :	38kDa
Host/Isotype :	Mouse IgG1
Storage :	Store at 4°C short term. Aliquot and store at -20°C long term. Avoid freeze/thaw cycles.
Species Reactivity :	Human,Mouse
Immunogen :	Purified recombinant fragment of human BDH1 expressed in E. Coli.
Formulation :	Ascitic fluid containing 0.03% sodium azide.

Application

WB	1/500 - 1/2000
IHC	1/200 - 1/1000
ELISA	1/10000

References

- Biochemistry. 1996 Jun 25;35(25):8158-65.
- Biochemistry. 2000 Oct 3;39(39):11928-38.
- Proc Natl Acad Sci U S A. 2001 Dec 18;98(26):15089-94.

Call 1-510-860-4615
+86-19375157864
Email Info@ProMab.com
Web www.ProMab.com
www.ProMab.cn

Protocol

WB - www.promab.com/protocol/wb.html
IHC - www.promab.com/protocol/ihc.html
ICC - www.promab.com/protocol/icc.html
HCM - www.promab.com/protocol/hcm.html
Antigen Sequence is available upon request.

Products and Services

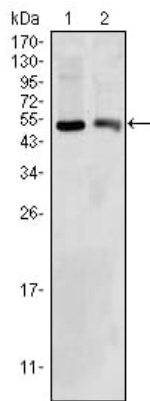
- Mouse Monoclonal Antibody
- Rat Monoclonal Antibody
- Human Antibody
- Hybridoma Sequencing
- Polyclonal Antibody

For Research Only

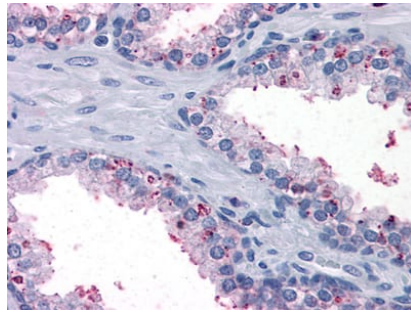
Application Key:WB - Western Blot | IHC - Immunohistochemistry | ICC - Immunocytochemistry | FCM - Flow Cytometry | ELISA - Enzyme-linked Immunosorbent Assay | IP - Immunoprecipitation

#30003

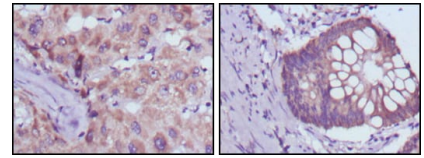
Mouse Monoclonal Antibody to BDH1



Western blot analysis using BDH1 mouse mAb against HepG2 (1) and NIH/3T3 (2) cell lysate.



Immunohistochemical analysis of paraffin-embedded human Prostate tissues using anti-BDH1 mouse mAb



Immunohistochemical analysis of paraffin-embedded human liver cancer (left) and colorectal cancer tissues (right) using BDH1 mouse mAb with DAB staining.

For Research Only

Application Key: WB - Western Blot | IHC - Immunohistochemistry | ICC - Immunocytochemistry | FCM - Flow Cytometry | ELISA - Enzyme-linked Immunosorbent Assay | IP - Immunoprecipitation

#30003