

Mouse Monoclonal Antibody to GOT2

Order Information

| | | |
|--------------------|-------|------|
| Catalog# | 30004 | |
| Size/Concentration | 100µl | 50µl |
| Price(¥) | 2180 | 1280 |

Description

Glutamic-oxaloacetic transaminase is a pyridoxal phosphate-dependent enzyme which exists in cytoplasmic and inner-membrane mitochondrial forms, GOT1 and GOT2, respectively. GOT plays a role in amino acid metabolism and the urea and tricarboxylic acid cycles. The two enzymes are homodimeric and show close homology.

Specification

Aliases : KAT4; KATIV; mitAAT

Entrez GeneID : 2806

Swissprot : P00505

clone : 3E9

WB Predicted band size : 47kDa

Host/Isotype : Mouse IgG1

Storage : Store at 4°C short term. Aliquot and store at -20°C long term. Avoid freeze/thaw cycles.

Species Reactivity : Human, Mouse, Rat, Monkey

Immunogen : Purified recombinant fragment of human GOT2 expressed in E. Coli.

Formulation : Ascitic fluid containing 0.03% sodium azide.

Application

| | |
|-------|----------------|
| WB | 1/500 - 1/2000 |
| ICC | 1/200 - 1/1000 |
| ELISA | 1/10000 |

References

1. Hepatology. 1998 Apr;27(4):1064-74.
2. Cell. 2005 Sep 23;122(6):957-68.
3. Psychiatr Genet. 2007 Oct;17(5):314.

Call 1-510-860-4615

+86-19375157864

Email Info@ProMab.com

Web www.ProMab.com

www.ProMab.cn

Protocol

WB - www.promab.com/protocol/wb.html

IHC - www.promab.com/protocol/ihc.html

ICC - www.promab.com/protocol/icc.html

HCM - www.promab.com/protocol/hcm.html

Antigen Sequence is available upon request.

Products and Services

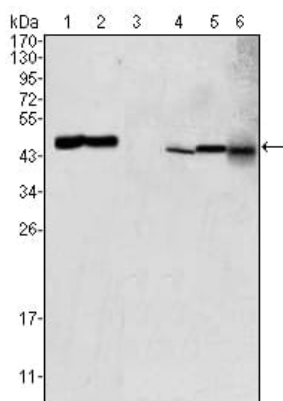
- Mouse Monoclonal Antibody
- Rat Monoclonal Antibody
- Human Antibody
- Hybridoma Sequencing
- Polyclonal Antibody

For Research Only

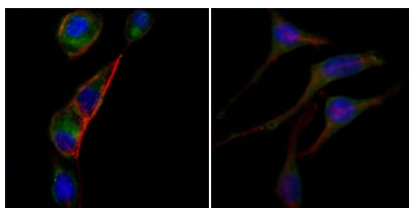
Application Key: WB - Western Blot | IHC - Immunohistochemistry | ICC - Immunocytochemistry | FCM - Flow Cytometry | ELISA - Enzyme-linked Immunosorbent Assay | IP - Immunoprecipitation

#30004

Mouse Monoclonal Antibody to GOT2



Western blot analysis using GOT2 mouse mAb against HEK293 (1), PC-12 (2), HL-60 (3), BCBL-1 (4), HepG2 (5) and NIH/3T3 (6) cell lysate.



Immunofluorescence analysis of PC-3 (left) and SK-BR-3 (right) cells using anti-GOT2 mAb (green). Red: Actin filaments have been labeled with DY-554 phalloidin. Blue: DRAQ5 fluorescent DNA dye.

For Research Only

Application Key: WB - Western Blot | IHC - Immunohistochemistry | ICC - Immunocytochemistry | FCM - Flow Cytometry | ELISA - Enzyme-linked Immunosorbent Assay | IP - Immunoprecipitation

#30004