

# Mouse Monoclonal Antibody to DKK3

## Order Information

Catalog#	30010	
Size/Concentration	100µl	50µl
Price(¥)	2180	1280

## Description

Dkk-3 (Dickkopf-3) is a member of the dickkopf family. It is a 350 amino acid secreted glycoprotein that is composed of an N-terminal signal peptide and two conserved cysteine-rich domains, which are separated by a 12 amino acid linker region. This secreted protein is involved in embryonic development through its interactions with the Wnt signaling pathway. The expression of this gene is decreased in a variety of cancer cell lines and it may function as a tumor suppressor gene.

## Specification

Aliases : RIG; REIC

Entrez GeneID : 27122

Swissprot : Q9UBP4

clone : 4G7

WB Predicted band size : 38kDa

Host/Isotype : Mouse IgG1

Storage : Store at 4°C short term. Aliquot and store at -20°C long term. Avoid freeze/thaw cycles.

Species Reactivity : Human, Monkey

Immunogen : Purified recombinant fragment of human DKK3 expressed in E. Coli.

Formulation : Ascitic fluid containing 0.03% sodium azide.

## Application

WB	1/500 - 1/2000
FCM	1/200 - 1/400
ELISA	1/10000

## References

1. Virchows Arch. 2009 Jun;454(6):639-46.
2. Gene. 2002 Jan 9;282(1-2):151-8.
3. J Urol. 2004 Mar;171(3):1314-8.

Call 1-510-860-4615  
+86-19375157864  
Email [Info@ProMab.com](mailto:Info@ProMab.com)  
Web [www.ProMab.com](http://www.ProMab.com)  
[www.ProMab.cn](http://www.ProMab.cn)

## Protocol

WB - [www.promab.com/protocol/wb.html](http://www.promab.com/protocol/wb.html)  
IHC - [www.promab.com/protocol/ihc.html](http://www.promab.com/protocol/ihc.html)  
ICC - [www.promab.com/protocol/icc.html](http://www.promab.com/protocol/icc.html)  
HCM - [www.promab.com/protocol/hcm.html](http://www.promab.com/protocol/hcm.html)

**Antigen Sequence** is available upon request.

## Products and Services

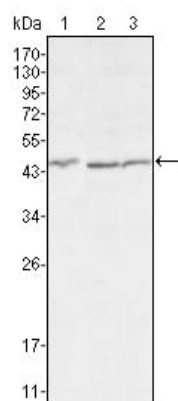
- Mouse Monoclonal Antibody
- Rat Monoclonal Antibody
- Human Antibody
- Hybridoma Sequencing
- Polyclonal Antibody

**For Research Only**

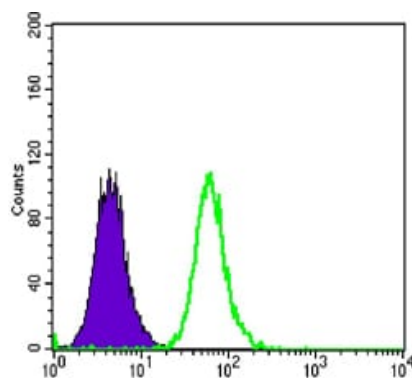
**Application Key:** WB - Western Blot | IHC - Immunohistochemistry | ICC - Immunocytochemistry | FCM - Flow Cytometry | ELISA - Enzyme-linked Immunosorbent Assay | IP - Immunoprecipitation

# #30010

## Mouse Monoclonal Antibody to DKK3



Western blot analysis using DKK3 mouse mAb against HEK293 (1), MCF-7 (2) and HL7702 (3) cell lysate.



Flow cytometric analysis of MCF-7 cells using anti-DKK3 mAb (green) and negative control (purple).

**For Research Only**

**Application Key:** WB - Western Blot | IHC - Immunohistochemistry | ICC - Immunocytochemistry | FCM - Flow Cytometry | ELISA - Enzyme-linked Immunosorbent Assay | IP - Immunoprecipitation

#30010