

Mouse Monoclonal Antibody to TCF3

Order Information

Catalog#	30012	
Size/Concentration	100µl	50µl
Price(¥)	2180	1280

Description

Heterodimers between TCF3 and tissue-specific basic helix-loop-helix (bHLH) proteins play major roles in determining tissue-specific cell fate during embryogenesis, like muscle or early B-cell differentiation. Dimers bind DNA on E-box motifs: 5'-CANNTG-3'. Binds to the kappa-E2 site in the kappa immunoglobulin gene enhancer.

Specification

Aliases : E2A; ITF1; VDIR; bHLHb21; MGC129647; MGC129648; TCF3

Entrez GeneID : 6929

Swissprot : P15923

clone : 6B8

WB Predicted band size : 67.6kDa

Host/Isotype : Mouse IgG1

Storage : Store at 4°C short term. Aliquot and store at -20°C long term. Avoid freeze/thaw cycles.

Species Reactivity : Human

Immunogen : Purified recombinant fragment of human TCF3 expressed in E. Coli.

Formulation : Ascitic fluid containing 0.03% sodium azide.

Application

WB	1/500 - 1/2000
FCM	1/200 - 1/400
ELISA	1/10000

References

1. J Biol Chem. 2000 Oct 27;275(43):33567-73.
2. Mol Cell Biol. 2001 Mar;21(5):1866-73.
3. J Biol Chem. 2003 Jan 24;278(4):2370-6. Epub 2002 Nov 14.

Call 1-510-860-4615

+86-19375157864

Email Info@ProMab.com

Web www.ProMab.com

www.ProMab.cn

Protocol

WB - www.promab.com/protocol/wb.html

IHC - www.promab.com/protocol/ihc.html

ICC - www.promab.com/protocol/icc.html

HCM - www.promab.com/protocol/hcm.html

Antigen Sequence is available upon request.

Products and Services

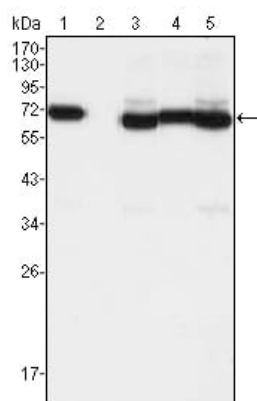
- Mouse Monoclonal Antibody
- Rat Monoclonal Antibody
- Human Antibody
- Hybridoma Sequencing
- Polyclonal Antibody

For Research Only

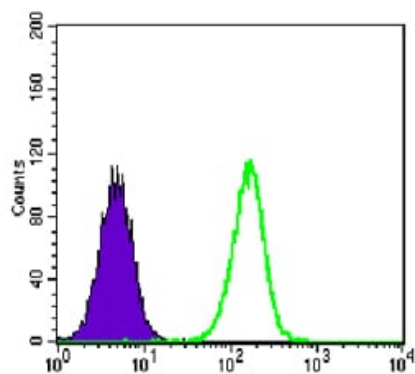
Application Key: WB - Western Blot | IHC - Immunohistochemistry | ICC - Immunocytochemistry | FCM - Flow Cytometry | ELISA - Enzyme-linked Immunosorbent Assay | IP - Immunoprecipitation

#30012

Mouse Monoclonal Antibody to TCF3



Western blot analysis using TCF3 mouse mAb against A549 (1), A431 (2), HeLa (3), PANC-1 (4) and PC-3 (5) cell lysate.



Flow cytometric analysis of A549 cells using anti-TCF3 mAb (green) and negative control (purple).

For Research Only

Application Key: WB - Western Blot | IHC - Immunohistochemistry | ICC - Immunocytochemistry | FCM - Flow Cytometry | ELISA - Enzyme-linked Immunosorbent Assay | IP - Immunoprecipitation

#30012