

Mouse Monoclonal Antibody to EGF

Order Information

Catalog#	30015	
Size/Concentration	100µl	50µl
Price(¥)	2180	1280

Description

Epidermal growth factor has a profound effect on the differentiation of specific cells in vivo and is a potent mitogenic factor for a variety of cultured cells of both ectodermal and mesodermal origin. The EGF precursor is believed to exist as a membrane-bound molecule which is proteolytically cleaved to generate the 53-amino acid peptide hormone that stimulates cells to divide.

Specification

Aliases : URG; HOMG4; EGF

Entrez GeneID : 1950

Swissprot : P01133

clone : 4E11

WB Predicted band size : 134kDa

Host/Isotype : Mouse IgG1

Storage : Store at 4°C short term. Aliquot and store at -20°C long term. Avoid freeze/thaw cycles.

Species Reactivity : Human

Immunogen : Purified recombinant fragment of human EGF expressed in E. Coli.

Formulation : Ascitic fluid containing 0.03% sodium azide.

Application

ICC	1/200 - 1/1000
ELISA	1/10000

References

1. Biochem J. 1992 Dec 1;288 (Pt 2):395-405.
2. Oncogene. 2000 Mar 16;19(12):1509-18.
3. Nature. 2002 Mar 14;416(6877):183-7.
4. Radiat Res. 2003 Apr;159(4):439-52.

Call 1-510-860-4615
+86-19375157864
Email Info@ProMab.com
Web www.ProMab.com
www.ProMab.cn

Protocol

WB - www.promab.com/protocol/wb.html
IHC - www.promab.com/protocol/ihc.html
ICC - www.promab.com/protocol/icc.html
HCM - www.promab.com/protocol/hcm.html

Antigen Sequence is available upon request.

Products and Services

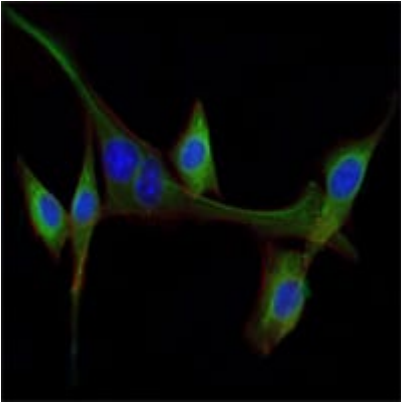
- Mouse Monoclonal Antibody
- Rat Monoclonal Antibody
- Human Antibody
- Hybridoma Sequencing
- Polyclonal Antibody

For Research Only

Application Key:WB - Western Blot | IHC - Immunohistochemistry | ICC - Immunocytochemistry | FCM - Flow Cytometry | ELISA - Enzyme-linked Immunosorbent Assay | IP - Immunoprecipitation

#30015

Mouse Monoclonal Antibody to EGF



Immunofluorescence analysis of NIH/3T3 cells using EGF mouse mAb (green). Blue: DRAQ5 fluorescent DNA dye. Red: Actin filaments have been labeled with Alexa Fluor-555 phalloidin.

For Research Only

Application Key: WB - Western Blot | IHC - Immunohistochemistry | ICC - Immunocytochemistry | FCM - Flow Cytometry | ELISA - Enzyme-linked Immunosorbent Assay | IP - Immunoprecipitation

#30015