

# Mouse Monoclonal Antibody to PARP

## Order Information

Catalog#	30016	
Size/Concentration	100µl	50µl
Price(¥)	2180	1280

## Description

This gene encodes a chromatin-associated enzyme, poly(ADP-ribosyl)transferase, which modifies various nuclear proteins by poly(ADP-ribosyl)ation. The modification is dependent on DNA and is involved in the regulation of various important cellular processes such as differentiation, proliferation, and tumor transformation and also in the regulation of the molecular events involved in the recovery of cell from DNA damage. In addition, this enzyme may be the site of mutation in Fanconi anemia, and may participate in the pathophysiology of type I diabetes.

## Specification

Aliases : PARP; PPOL; ADPRT; ADPRT1; PARP-1; pADPRT-1; PARP1

Entrez GeneID : 142

Swissprot : P09874

clone : 7A10

WB Predicted band size : 117kDa

Host/Isotype : Mouse IgG1

Storage : Store at 4°C short term. Aliquot and store at -20°C long term. Avoid freeze/thaw cycles.

Species Reactivity : Human

Immunogen : Synthetic peptide of human PARP, conjugated to KLH.

Formulation : Ascitic fluid containing 0.03% sodium azide.

## Application

WB	1/500 - 1/2000
FCM	1/200 - 1/400
ELISA	1/10000

## References

1. Cytogenet Cell Genet. 1992;61(3):172-4.
2. J Immunol. 1997 Dec 1;159(11):5246-52.
3. J Biol Chem. 2001 Dec 7;276(49):45588-97.

Call 1-510-860-4615  
+86-19375157864  
Email [Info@ProMab.com](mailto:Info@ProMab.com)  
Web [www.ProMab.com](http://www.ProMab.com)  
[www.ProMab.cn](http://www.ProMab.cn)

## Protocol

WB - [www.promab.com/protocol/wb.html](http://www.promab.com/protocol/wb.html)  
IHC - [www.promab.com/protocol/ihc.html](http://www.promab.com/protocol/ihc.html)  
ICC - [www.promab.com/protocol/icc.html](http://www.promab.com/protocol/icc.html)  
HCM - [www.promab.com/protocol/hcm.html](http://www.promab.com/protocol/hcm.html)

**Antigen Sequence** is available upon request.

## Products and Services

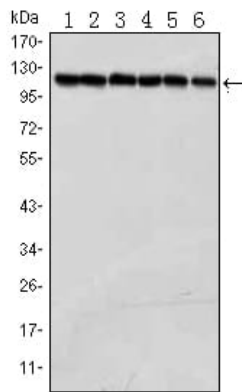
- Mouse Monoclonal Antibody
- Rat Monoclonal Antibody
- Human Antibody
- Hybridoma Sequencing
- Polyclonal Antibody

**For Research Only**

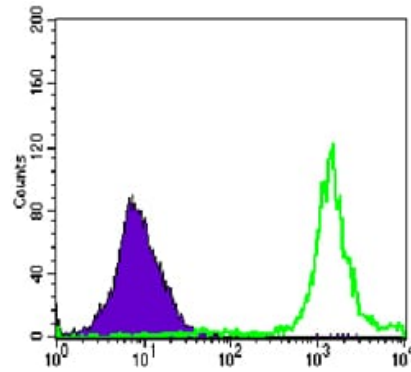
**Application Key:**WB - Western Blot | IHC - Immunohistochemistry | ICC - Immunocytochemistry | FCM - Flow Cytometry | ELISA - Enzyme-linked Immunosorbent Assay | IP - Immunoprecipitation

# #30016

# Mouse Monoclonal Antibody to PARP



Western blot analysis using PARP mouse mAb against Jurkat (1), K562 (2), HeLa (3), Raji (4), THP-1 (5) and SW620 (6) cell lysate.



Flow cytometric analysis of Jurkat cells using anti-PARP mAb (green) and negative control (purple).

**For Research Only**

**Application Key:** WB - Western Blot | IHC - Immunohistochemistry | ICC - Immunocytochemistry | FCM - Flow Cytometry | ELISA - Enzyme-linked Immunosorbent Assay | IP - Immunoprecipitation

#30016