

Mouse Monoclonal Antibody to CD247

Order Information

Catalog#	30017	
Size/Concentration	100µl	50µl
Price(¥)	2180	1280

Description

The protein encoded by this gene is T-cell receptor zeta, which together with T-cell receptor alpha/beta and gamma/delta heterodimers, and with CD3-gamma, -delta and -epsilon, forms the T-cell receptor-CD3 complex. The zeta chain plays an important role in coupling antigen recognition to several intracellular signal-transduction pathways. Low expression of the antigen results in impaired immune response. Two alternatively spliced transcript variants encoding distinct isoforms have been found for this gene.

Specification

Aliases	: T3Z; CD3H; CD3Q; CD3Z; TCRZ; CD3-ZETA; CD247
Entrez GeneID	: 919
Swissprot	: P20963
clone	: 4B10
WB Predicted band size	: 18kDa
Host/Isotype	: Mouse IgG1
Storage	: Store at 4°C short term. Aliquot and store at -20°C long term. Avoid freeze/thaw cycles.
Species Reactivity	: Human
Immunogen	: Purified recombinant fragment of human CD247 expressed in E. Coli.
Formulation	: Ascitic fluid containing 0.03% sodium azide.

Application

IHC	1/200 - 1/1000
ICC	1/200 - 1/1000
FCM	1/200 - 1/400
ELISA	1/10000

References

1. J Immunol. 2002 Aug 15;169(4):1705-12.
2. Arthritis Rheum. 2003 Jul;48(7):1948-55.
3. Nat Methods. 2005 Aug;2(8):591-8.

Call 1-510-860-4615
+86-19375157864
Email Info@ProMab.com
Web www.ProMab.com
www.ProMab.cn

Protocol

WB - www.promab.com/protocol/wb.html
IHC - www.promab.com/protocol/ihc.html
ICC - www.promab.com/protocol/icc.html
HCM - www.promab.com/protocol/hcm.html
Antigen Sequence is available upon request.

Products and Services

- Mouse Monoclonal Antibody
- Rat Monoclonal Antibody
- Human Antibody
- Hybridoma Sequencing
- Polyclonal Antibody

For Research Only

Application Key: WB - Western Blot | IHC - Immunohistochemistry | ICC - Immunocytochemistry | FCM - Flow Cytometry | ELISA - Enzyme-linked Immunosorbent Assay | IP - Immunoprecipitation

#30017

Mouse Monoclonal Antibody to CD247

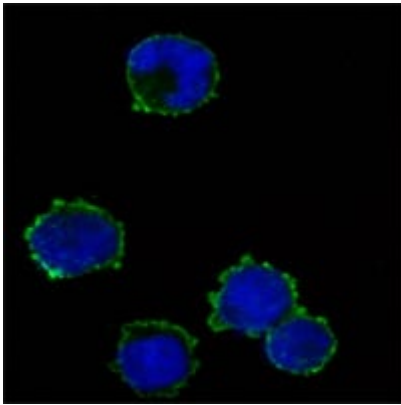
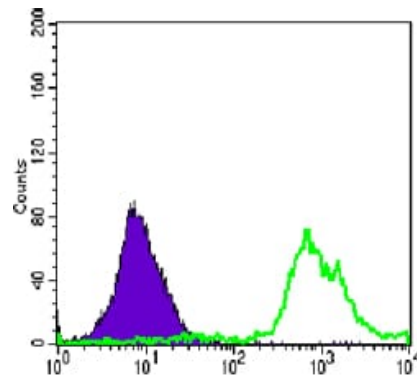
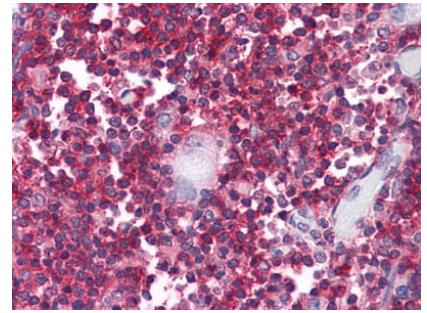


Figure3: Immunofluorescence analysis of K562 cells using anti-CD247 mAb (green).
Blue: DRAQ5 fluorescent DNA dye.



Flow cytometric analysis of Jurkat cells using anti-CD247 mAb (green) and negative control (purple).



Immunohistochemical analysis of paraffin-embedded human Thymus tissues using anti-CD247 mouse mAb

For Research Only

Application Key: WB - Western Blot | IHC - Immunohistochemistry | ICC - Immunocytochemistry | FCM - Flow Cytometry | ELISA - Enzyme-linked Immunosorbent Assay | IP - Immunoprecipitation

#30017