

Mouse Monoclonal Antibody to PRDM1

Order Information

Catalog#	30020	
Size/Concentration	100µl	50µl
Price(¥)	2180	1280

Description

PRDM1/Blimp1 is a repressor of beta-interferon gene expression. This action is exerted by binding to the PRDI (positive regulatory domain I element) of the beta-IFN gene promoter. The transcription of this gene is increased upon virus induction. Two alternatively spliced transcript variants that encode different isoforms have been reported.

Specification

Aliases : BLIMP1; PRDI-BF1; MGC118922; MGC118923; MGC118924; MGC118925; PRDM1

Entrez GeneID : 639

Swissprot : O75626

clone : 5E7

WB Predicted band size : 88kDa

Host/Isotype : Mouse IgG1

Storage : Store at 4°C short term. Aliquot and store at -20°C long term. Avoid freeze/thaw cycles.

Species Reactivity : Human, Mouse

Immunogen : Purified recombinant fragment of human PRDM1 expressed in E. Coli.

Formulation : Ascitic fluid containing 0.03% sodium azide.

Application

WB	1/500 - 1/2000
ELISA	1/10000

References

1. Nat Cell Biol. 2006 Jun;8(6):623-30.
2. Int J Hematol. 2007 Dec;86(5):429-37.
3. Nat Genet. 2008 Aug;40(8):955-62.

Call 1-510-860-4615
+86-19375157864
Email Info@ProMab.com
Web www.ProMab.com
www.ProMab.cn

Protocol

WB - www.promab.com/protocol/wb.html
IHC - www.promab.com/protocol/ihc.html
ICC - www.promab.com/protocol/icc.html
HCM - www.promab.com/protocol/hcm.html

Antigen Sequence is available upon request.

Products and Services

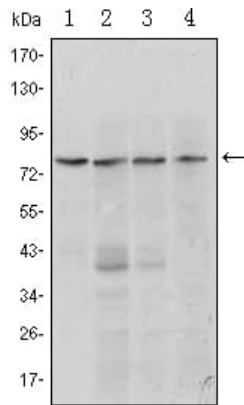
- Mouse Monoclonal Antibody
- Rat Monoclonal Antibody
- Human Antibody
- Hybridoma Sequencing
- Polyclonal Antibody

For Research Only

Application Key: WB - Western Blot | IHC - Immunohistochemistry | ICC - Immunocytochemistry | FCM - Flow Cytometry | ELISA - Enzyme-linked Immunosorbent Assay | IP - Immunoprecipitation

#30020

Mouse Monoclonal Antibody to PRDM1



Western blot analysis using PRDM1 mouse mAb against Raji (1, 2), L1210 (3) and TPH-1 (4) cell lysate.

For Research Only

Application Key: WB - Western Blot | IHC - Immunohistochemistry | ICC - Immunocytochemistry | FCM - Flow Cytometry | ELISA - Enzyme-linked Immunosorbent Assay | IP - Immunoprecipitation

#30020