

Mouse Monoclonal Antibody to NKX3A

Order Information

Catalog#	30027	
Size/Concentration	100µl	50µl
Price(¥)	2180	1280

Description

Nkx3.1 is a transcription factor that may play an important role in regulating proliferation of glandular epithelium and in the formation of ducts in the prostate. It has been thought to be one of the target genes of the 8p21 loss of heterozygosity, common in prostate cancer. But neither disruption of the coding region of the gene, nor mutations have been found in prostate cancer.

Specification

Aliases : NKX3; BAPX2; NKX3A; NKX3.1; NKX3-1

Entrez GeneID : 4824

Swissprot : Q99801

clone : 4H4

WB Predicted band size : 26.3kDa

Host/Isotype : Mouse IgG2b

Storage : Store at 4°C short term. Aliquot and store at -20°C long term. Avoid freeze/thaw cycles.

Species Reactivity : Human

Immunogen : Purified recombinant fragment of human NKX3A expressed in E. Coli.

Formulation : Ascitic fluid containing 0.03% sodium azide.

Application

WB	1/500 - 1/2000
IHC	1/200 - 1/1000
FCM	1/200 - 1/400
ELISA	1/10000

References

1. Exp Mol Med. 2006 Dec 31;38(6):625-33.
2. Exp Biol Med (Maywood). 2008 Mar;233(3):297-309.
3. Mol Biol Rep. 2010 Mar;37(3):1505-12.

Call 1-510-860-4615
+86-19375157864
Email Info@ProMab.com
Web www.ProMab.com
www.ProMab.cn

Protocol

WB - www.promab.com/protocol/wb.html
IHC - www.promab.com/protocol/ihc.html
ICC - www.promab.com/protocol/icc.html
HCM - www.promab.com/protocol/hcm.html

Antigen Sequence is available upon request.

Products and Services

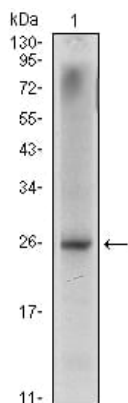
- Mouse Monoclonal Antibody
- Rat Monoclonal Antibody
- Human Antibody
- Hybridoma Sequencing
- Polyclonal Antibody

For Research Only

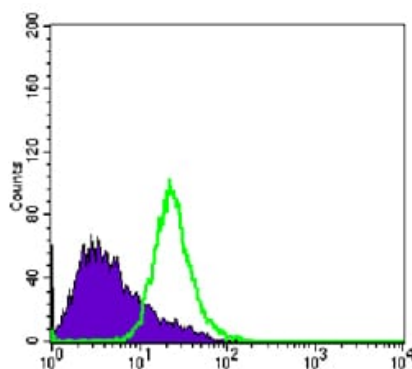
Application Key: WB - Western Blot | IHC - Immunohistochemistry | ICC - Immunocytochemistry | FCM - Flow Cytometry | ELISA - Enzyme-linked Immunosorbent Assay | IP - Immunoprecipitation

#30027

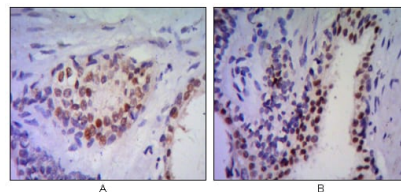
Mouse Monoclonal Antibody to NKX3A



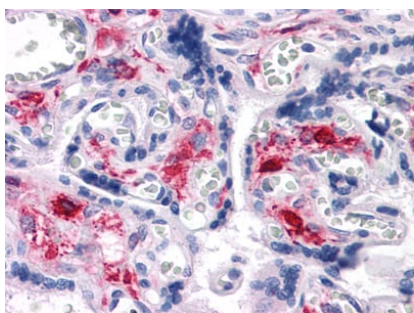
Western blot analysis using NKX3A mouse mAb against LNCaP (1) cell lysate.



Flow cytometric analysis of PC-3 cells using anti-NKX3A mAb (green) and negative control (purple).



Immunohistochemical analysis of paraffin-embedded human prostata tissues (A, B) using anti-NKX3A antibody with DAB staining.



Immunohistochemical analysis of paraffin-embedded human Liver tissues using NKX3A mAb

For Research Only

Application Key:WB - Western Blot | IHC - Immunohistochemistry | ICC - Immunocytochemistry | FCM - Flow Cytometry | ELISA - Enzyme-linked Immunosorbent Assay | IP - Immunoprecipitation

#30027