

# Mouse Monoclonal Antibody to SYP

## Order Information

Catalog#	30032	
Size/Concentration	100µl	50µl
Price(¥)	2180	1280

## Description

Synaptophysin (p38) is an integral membrane protein of small synaptic vesicles in brain and endocrine cells. Synaptophysin contains four transmembrane domains that form a hexameric channel or gap junction-like pore. Synaptophysin binds to the SNARE protein synaptobrevin/VAMP, which prevents the inclusion of synaptobrevin in the synaptic vesicle fusion complex and creates a pool of synaptobrevin for exocytosis when synapse activity increases. Synaptophysin is also responsible for targeting synaptobrevin 2/VAMP2 to synaptic vesicles, a critical component of the fusion complex.

## Specification

Aliases : MRXSYP; SYP

Entrez GeneID : 6855

Swissprot : P08247

clone : 7H12

WB Predicted band size : 33.8kDa

Host/Isotype : Mouse IgG1

Storage : Store at 4°C short term. Aliquot and store at -20°C long term. Avoid freeze/thaw cycles.

Species Reactivity : Human,Rat

Immunogen : Purified recombinant fragment of SYP expressed in E. Coli.

Formulation : Ascitic fluid containing 0.03% sodium azide.

## Application

WB	1/500 - 1/2000
IHC	1/200 - 1/1000
ELISA	1/10000

## References

1. Cancer. 2007 Oct 15;110(8):1776-81.
2. J Gastroenterol Hepatol. 2008 Oct;23(10):1574-85.
3. Virchows Arch. 2009 Aug;455(2):125-32.

Call 1-510-860-4615  
+86-19375157864  
Email [Info@ProMab.com](mailto:Info@ProMab.com)  
Web [www.ProMab.com](http://www.ProMab.com)  
[www.ProMab.cn](http://www.ProMab.cn)

## Protocol

WB - [www.promab.com/protocol/wb.html](http://www.promab.com/protocol/wb.html)  
IHC - [www.promab.com/protocol/ihc.html](http://www.promab.com/protocol/ihc.html)  
ICC - [www.promab.com/protocol/icc.html](http://www.promab.com/protocol/icc.html)  
HCM - [www.promab.com/protocol/hcm.html](http://www.promab.com/protocol/hcm.html)

**Antigen Sequence** is available upon request.

## Products and Services

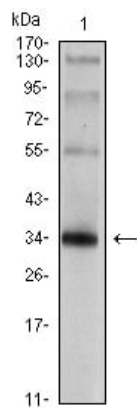
- Mouse Monoclonal Antibody
- Rat Monoclonal Antibody
- Human Antibody
- Hybridoma Sequencing
- Polyclonal Antibody

**For Research Only**

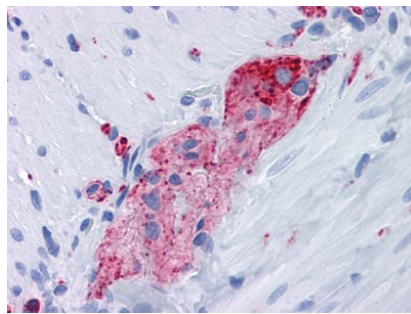
**Application Key:**WB - Western Blot | IHC - Immunohistochemistry | ICC - Immunocytochemistry | FCM - Flow Cytometry | ELISA - Enzyme-linked Immunosorbent Assay | IP - Immunoprecipitation

# #30032

# Mouse Monoclonal Antibody to SYP



Western blot analysis using SYP mouse mAb against rat brain tissue lysate.



Immunohistochemical analysis of paraffin-embedded human Small Intestine, myenteric plexus tissues using anti-SYP mouse mAb

**For Research Only**

**Application Key:** WB - Western Blot | IHC - Immunohistochemistry | ICC - Immunocytochemistry | FCM - Flow Cytometry | ELISA - Enzyme-linked Immunosorbent Assay | IP - Immunoprecipitation

#30032