

Mouse Monoclonal Antibody to CLOCK

Order Information

Catalog#	30034	
Size/Concentration	100µl	50µl
Price(¥)	2180	1280

Description

This gene encodes a protein that belongs to the basic helix-loop-helix (bHLH) family of transcription factors. Polymorphisms within the encoded protein have been associated with circadian rhythm sleep disorders. A similar protein in mice is a circadian regulator that acts as a transcription factor and forms a heterodimer with aryl hydrocarbon receptor nuclear translocator-like to activate transcription of mouse period 1.

Specification

Aliases : KAT13D; bHLHe8; KIAA0334; CLOCK

Entrez GeneID : 9575

Swissprot : O15516

clone : 8F7

WB Predicted band size : 95kDa

Host/Isotype : Mouse IgG1

Storage : Store at 4°C short term. Aliquot and store at -20°C long term. Avoid freeze/thaw cycles.

Species Reactivity : Human

Immunogen : Purified recombinant fragment of human CLOCK expressed in E. Coli.

Formulation : Ascitic fluid containing 0.03% sodium azide.

Application

ICC	1/200 - 1/1000
ELISA	1/10000

References

1. Chronobiol Int. 2007;24(4):589-97.
2. Neurosci Lett. 2008 Apr 11;435(1):30-3.
3. Virchows Arch. 2009 Apr;454(4):467-74.

Call 1-510-860-4615
+86-19375157864
Email Info@ProMab.com
Web www.ProMab.com
www.ProMab.cn

Protocol

WB - www.promab.com/protocol/wb.html
IHC - www.promab.com/protocol/ihc.html
ICC - www.promab.com/protocol/icc.html
HCM - www.promab.com/protocol/hcm.html

Antigen Sequence is available upon request.

Products and Services

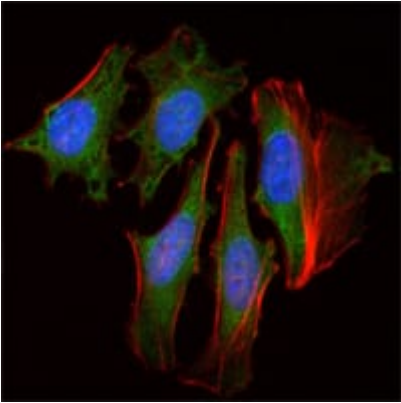
- Mouse Monoclonal Antibody
- Rat Monoclonal Antibody
- Human Antibody
- Hybridoma Sequencing
- Polyclonal Antibody

For Research Only

Application Key:WB - Western Blot | IHC - Immunohistochemistry | ICC - Immunocytochemistry | FCM - Flow Cytometry | ELISA - Enzyme-linked Immunosorbent Assay | IP - Immunoprecipitation

#30034

Mouse Monoclonal Antibody to CLOCK



Immunofluorescence analysis of HeLa cells using CLOCK mouse mAb (green). Red: Actin filaments have been labeled with Alexa Fluor-555 phalloidin. Blue: DRAQ5 fluorescent DNA dye.

For Research Only

Application Key: WB - Western Blot | IHC - Immunohistochemistry | ICC - Immunocytochemistry | FCM - Flow Cytometry | ELISA - Enzyme-linked Immunosorbent Assay | IP - Immunoprecipitation

#30034