

# Mouse Monoclonal Antibody to CD3E

## Order Information

|                    |       |      |
|--------------------|-------|------|
| Catalog#           | 30036 |      |
| Size/Concentration | 100µl | 50µl |
| Price(¥)           | 2180  | 1280 |

## Description

The protein encoded by this gene is the CD3-epsilon polypeptide, which together with CD3-gamma, -delta and -zeta, and the T-cell receptor alpha/beta and gamma/delta heterodimers, forms the T-cell receptor-CD3 complex. This complex plays an important role in coupling antigen recognition to several intracellular signal-transduction pathways. The genes encoding the epsilon, gamma and delta polypeptides are located in the same cluster on chromosome 11. The epsilon polypeptide plays an essential role in T-cell development. Defects in this gene cause immunodeficiency. This gene has also been linked to a susceptibility to type I diabetes in women.

## Specification

Aliases : T3E; TCRE; FLJ18683; CD3E

Entrez GeneID : 916

Swissprot : P07766

clone : 4E2

WB Predicted band size : 23kDa

Host/Isotype : Mouse IgG1

Storage : Store at 4°C short term. Aliquot and store at -20°C long term. Avoid freeze/thaw cycles.

Species Reactivity : Human

Immunogen : Purified recombinant fragment of CD3E expressed in E. Coli.

Formulation : Ascitic fluid containing 0.03% sodium azide.

## Application

|       |                |
|-------|----------------|
| WB    | 1/500 - 1/2000 |
| FCM   | 1/200 - 1/400  |
| ELISA | 1/10000        |

## References

1. Nat Methods. 2005 Aug;2(8):591-8.
2. J Cell Physiol. 2006 Dec;209(3):695-700. Review.
3. J Biol Chem. 2006 Dec 1;281(48):36977-84. Epub 2006 Oct 5.

Call 1-510-860-4615  
+86-19375157864  
Email [Info@ProMab.com](mailto:Info@ProMab.com)  
Web [www.ProMab.com](http://www.ProMab.com)  
[www.ProMab.cn](http://www.ProMab.cn)

## Protocol

WB - [www.promab.com/protocol/wb.html](http://www.promab.com/protocol/wb.html)  
IHC - [www.promab.com/protocol/ihc.html](http://www.promab.com/protocol/ihc.html)  
ICC - [www.promab.com/protocol/icc.html](http://www.promab.com/protocol/icc.html)  
HCM - [www.promab.com/protocol/hcm.html](http://www.promab.com/protocol/hcm.html)

**Antigen Sequence** is available upon request.

## Products and Services

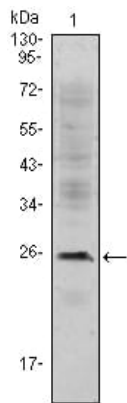
- Mouse Monoclonal Antibody
- Rat Monoclonal Antibody
- Human Antibody
- Hybridoma Sequencing
- Polyclonal Antibody

**For Research Only**

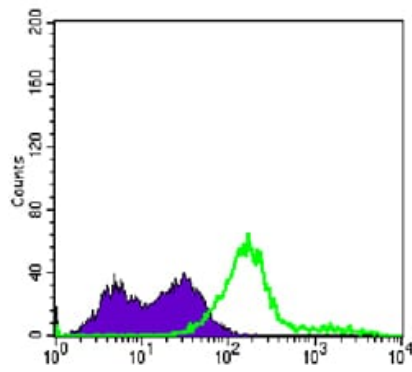
**Application Key:** WB - Western Blot | IHC - Immunohistochemistry | ICC - Immunocytochemistry | FCM - Flow Cytometry | ELISA - Enzyme-linked Immunosorbent Assay | IP - Immunoprecipitation

# #30036

# Mouse Monoclonal Antibody to CD3E



Western blot analysis using CD3E mouse mAb against Jurkat (1) cell lysate.



Flow cytometric analysis of Jurkat cells using CD3E mouse mAb (green) and negative control (purple).

**For Research Only**

**Application Key:** WB - Western Blot | IHC - Immunohistochemistry | ICC - Immunocytochemistry | FCM - Flow Cytometry | ELISA - Enzyme-linked Immunosorbent Assay | IP - Immunoprecipitation

#30036