

# Mouse Monoclonal Antibody to CD19

## Order Information

Catalog#	30039	
Size/Concentration	100µl	50µl
Price(¥)	2180	1280

## Description

The CD19 antigen (95kDa) is expressed from the earliest stage of B progenitor development, on all peripheral B cells including germinal centre B cells, and all B cell lines and B cell leukaemia tested. T cell and monocytic cell lines are negative and the antigen is lost on B cell maturation to plasma cells. The antigen is a type I integral membrane glycoprotein whose in vitro inhibition will influence B cell activation and proliferation.

## Specification

Aliases : B4; MGC12802

Entrez GeneID : 930

Swissprot : P15391

clone : 2E2

WB Predicted band size : 61kDa

Host/Isotype : Mouse IgG2b

Storage : Store at 4°C short term. Aliquot and store at -20°C long term. Avoid freeze/thaw cycles.

Species Reactivity : Human

Immunogen : Purified recombinant fragment of human CD19 expressed in E. Coli.

Formulation : Ascitic fluid containing 0.03% sodium azide.

## Application

ICC	1/200 - 1/1000
FCM	1/200 - 1/400
ELISA	1/10000

## References

1. Rie, M.A. de, J. of Immunol. Methods, 1987. 102: 187.
2. Rie, M.A. de, Leukaemia Research, 1988. 12: 135.

Call 1-510-860-4615

+86-19375157864

Email [Info@ProMab.com](mailto:Info@ProMab.com)

Web [www.ProMab.com](http://www.ProMab.com)

[www.ProMab.cn](http://www.ProMab.cn)

## Protocol

WB - [www.promab.com/protocol/wb.html](http://www.promab.com/protocol/wb.html)

IHC - [www.promab.com/protocol/ihc.html](http://www.promab.com/protocol/ihc.html)

ICC - [www.promab.com/protocol/icc.html](http://www.promab.com/protocol/icc.html)

HCM - [www.promab.com/protocol/hcm.html](http://www.promab.com/protocol/hcm.html)

**Antigen Sequence** is available upon request.

## Products and Services

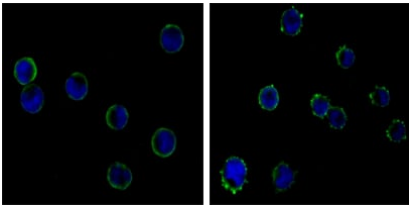
- Mouse Monoclonal Antibody
- Rat Monoclonal Antibody
- Human Antibody
- Hybridoma Sequencing
- Polyclonal Antibody

**For Research Only**

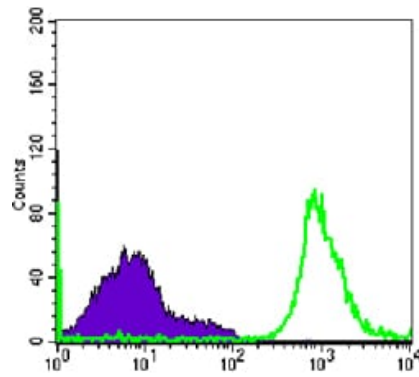
**Application Key:**WB - Western Blot | IHC - Immunohistochemistry | ICC - Immunocytochemistry | FCM - Flow Cytometry | ELISA - Enzyme-linked Immunosorbent Assay | IP - Immunoprecipitation

# #30039

# Mouse Monoclonal Antibody to CD19



Immunofluorescence analysis of HL-60(left) and K562 (right) cells using CD19 mouse mAb (green). Blue: DRAQ5 fluorescent DNA dye.



Flow cytometric analysis of Raji cells using CD19 mouse mAb (green) and negative control (purple).

**For Research Only**

**Application Key:** WB - Western Blot | IHC - Immunohistochemistry | ICC - Immunocytochemistry | FCM - Flow Cytometry | ELISA - Enzyme-linked Immunosorbent Assay | IP - Immunoprecipitation

#30039