

Mouse Monoclonal Antibody to JAK2

Order Information

Catalog#	30041	
Size/Concentration	100µl	50µl
Price(¥)	2180	1280

Description

This gene product is a protein tyrosine kinase involved in a specific subset of cytokine receptor signaling pathways. It has been found to be constitutively associated with the prolactin receptor and is required for responses to gamma interferon. Mice that do not express an active protein for this gene exhibit embryonic lethality associated with the absence of definitive erythropoiesis.

Specification

Aliases : JTK10; JAK2

Entrez GeneID : 3717

Swissprot : O60674

clone : 1C1

WB Predicted band size : 130.6kDa

Host/Isotype : Mouse IgG1

Storage : Store at 4°C short term. Aliquot and store at -20°C long term. Avoid freeze/thaw cycles.

Species Reactivity : Human

Immunogen : Purified recombinant fragment of JAK2(745-955aa) expressed in E. Coli.

Formulation : Ascitic fluid containing 0.03% sodium azide.

Application

WB	1/500 - 1/2000
ELISA	1/10000

References

1. Mol Cell Endocrinol. 1997 May 16;129(2):199-208.
2. J Immunol. 1999 Dec 15;163(12):6651-8.
3. J Biol Chem. 1999 Oct 29;274(44):31531-42.

Call 1-510-860-4615

+86-19375157864

Email Info@ProMab.com

Web www.ProMab.com

www.ProMab.cn

Protocol

WB - www.promab.com/protocol/wb.html

IHC - www.promab.com/protocol/ihc.html

ICC - www.promab.com/protocol/icc.html

HCM - www.promab.com/protocol/hcm.html

Antigen Sequence is available upon request.

Products and Services

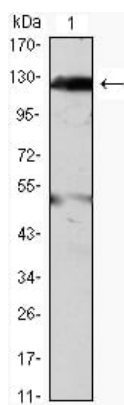
- Mouse Monoclonal Antibody
- Rat Monoclonal Antibody
- Human Antibody
- Hybridoma Sequencing
- Polyclonal Antibody

For Research Only

Application Key: WB - Western Blot | IHC - Immunohistochemistry | ICC - Immunocytochemistry | FCM - Flow Cytometry | ELISA - Enzyme-linked Immunosorbent Assay | IP - Immunoprecipitation

#30041

Mouse Monoclonal Antibody to JAK2



Western blot analysis using JAK2 mouse mAb against THP-1(1) cell lysate.

For Research Only

Application Key: WB - Western Blot | IHC - Immunohistochemistry | ICC - Immunocytochemistry | FCM - Flow Cytometry | ELISA - Enzyme-linked Immunosorbent Assay | IP - Immunoprecipitation

#30041