

Mouse Monoclonal Antibody to CDH2

Order Information

Catalog#	30042	
Size/Concentration	100µl	50µl
Price(¥)	2180	1280

Description

This gene is a classical cadherin from the cadherin superfamily. The encoded protein is a calcium dependent cell-cell adhesion glycoprotein comprised of five extracellular cadherin repeats, a transmembrane region and a highly conserved cytoplasmic tail. The protein functions during gastrulation and is required for establishment of left-right asymmetry. At certain central nervous system synapses, presynaptic to postsynaptic adhesion is mediated at least in part by this gene product.

Specification

Aliases : CDHN; NCAD; CD325; CDw325;CDH2;Cadherin-2; Neural cadherin; N-cadherin; CD antigen CD325

Entrez GeneID : 1000

Swissprot : P19022

clone : 5D5

WB Predicted band size : 99.8kDa

Host/Isotype : Mouse IgG1

Antibody Type : Primary antibody

Storage : Store at 4°C short term. Aliquot and store at -20°C long term. Avoid freeze/thaw cycles.

Species Reactivity : Human,Mouse,Rat

Immunogen : Purified recombinant fragment of human CDH2 expressed in E. Coli.

Formulation : Ascitic fluid containing 0.03% sodium azide.

Application

WB	1/500 - 1/2000
IHC	1/200 - 1/1000
ICC	1/200 - 1/1000
FCM	1/200 - 1/400
ELISA	1/10000

References

1. J Biol Chem. 2007 Mar 16;282(11):8545-56.
2. Mol Cell Biochem. 2007 Aug;302(1-2):19-26.
3. Urol Oncol. 2010 Mar-Apr;28(2):180-8.

Call 1-510-860-4615
+86-19375157864
Email Info@ProMab.com
Web www.ProMab.com
www.ProMab.cn

Protocol

WB - www.promab.com/protocol/wb.html
IHC - www.promab.com/protocol/ihc.html
ICC - www.promab.com/protocol/icc.html
HCM - www.promab.com/protocol/hcm.html

Antigen Sequence is available upon request.

Products and Services

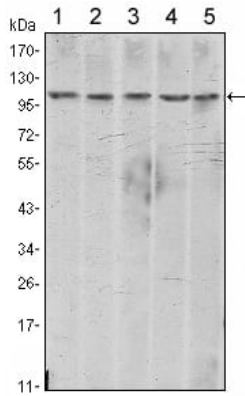
- Mouse Monoclonal Antibody
- Rat Monoclonal Antibody
- Human Antibody
- Hybridoma Sequencing
- Polyclonal Antibody

For Research Only

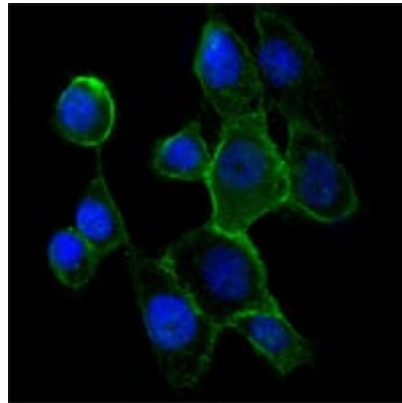
Application Key:WB - Western Blot | IHC - Immunohistochemistry | ICC - Immunocytochemistry | FCM - Flow Cytometry | ELISA - Enzyme-linked Immunosorbent Assay | IP - Immunoprecipitation

#30042

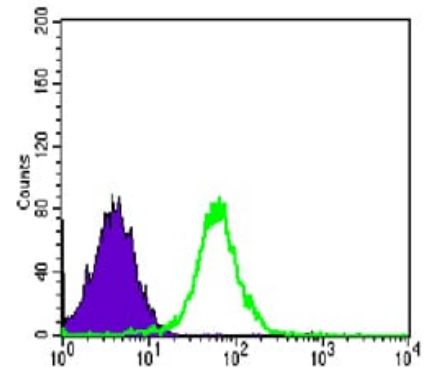
Mouse Monoclonal Antibody to CDH2



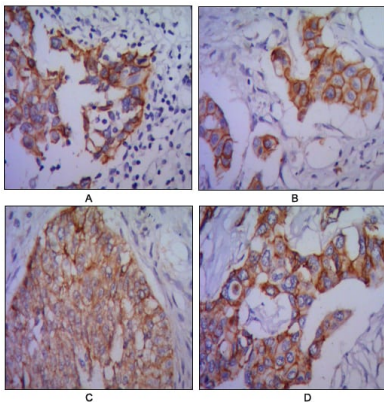
Western blot analysis using CDH2 mouse mAb against A431 (1), NIH/3T3 (2), HeLa (3), C6 (4) and LNCap (5) cell lysate.



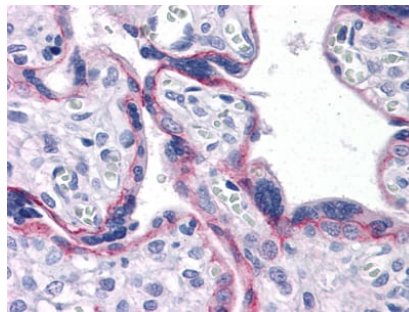
Immunofluorescence analysis of A431 cells using CDH2 mouse mAb (green). Blue: DRAQ5 fluorescent DNA dye.



Flow cytometric analysis of PC-2 cells using CDH2 mouse mAb (green) and negative control (purple).



Immunohistochemical analysis of paraffin-embedded human lung cancer (A), colon cancer (B), ovarian cancer (C) and mammary cancer (D), using CDH2 mouse mAb with DAB staining.



Immunohistochemical analysis of paraffin-embedded human Placenta tissues using CDH2 mouse mAb

For Research Only

Application Key: WB - Western Blot | IHC - Immunohistochemistry | ICC - Immunocytochemistry | FCM - Flow Cytometry | ELISA - Enzyme-linked Immunosorbent Assay | IP - Immunoprecipitation

#30042