

Mouse Monoclonal Antibody to SKP1

Order Information

Catalog#	30294	
Size/Concentration	100µl	50µl
Price(¥)	2180	1280

Description

This gene encodes a component of SCF complexes, which are composed of this protein, cullin 1, a ring-box protein, and one member of the F-box family of proteins. This protein binds directly to the F-box motif found in F-box proteins. SCF complexes are involved in the regulated ubiquitination of specific protein substrates, which targets them for degradation by the proteasome. Specific F-box proteins recognize different target protein(s), and many specific SCF substrates have been identified including regulators of cell cycle progression and development. Studies have also characterized the protein as an RNA polymerase II elongation factor. Alternative splicing of this gene results in two transcript variants. A related pseudogene has been identified on chromosome 7.

Specification

Aliases	: OCP2; p19A; EMC19; SKP1A; OCP-II; TCEB1L; MGC34403
Entrez GeneID	: 6500
Swissprot	: P63208
clone	: 4E11
WB Predicted band size	: 19kDa
Host/Isotype	: Mouse IgG1
Storage	: Store at 4°C short term. Aliquot and store at -20°C long term. Avoid freeze/thaw cycles.
Species Reactivity	: Human
Immunogen	: Purified recombinant fragment of human SKP1 expressed in E. Coli.
Formulation	: Ascitic fluid containing 0.03% sodium azide.

Application

WB	1/500 - 1/2000
IHC	1/200 - 1/1000
ICC	1/200 - 1/1000
FCM	1/200 - 1/400
ELISA	1/10000

References

1. J Virol. 2009 Dec;83(23):12068-83.
2. Cell. 2009 Jul 23;138(2):389-403.

Call 1-510-860-4615
+86-19375157864
Email Info@ProMab.com
Web www.ProMab.com
www.ProMab.cn

Protocol

WB - www.promab.com/protocol/wb.html
IHC - www.promab.com/protocol/ihc.html
ICC - www.promab.com/protocol/icc.html
HCM - www.promab.com/protocol/hcm.html

Antigen Sequence is available upon request.

Products and Services

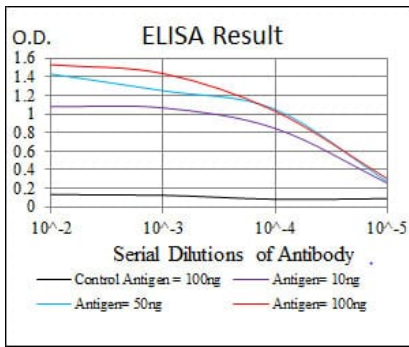
- Mouse Monoclonal Antibody
- Rat Monoclonal Antibody
- Human Antibody
- Hybridoma Sequencing
- Polyclonal Antibody

For Research Only

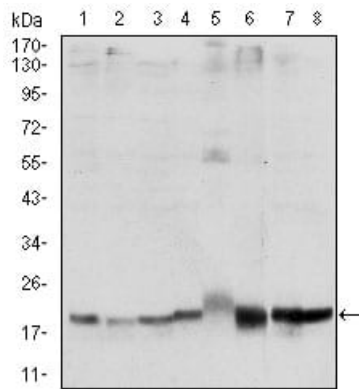
Application Key: WB - Western Blot | IHC - Immunohistochemistry | ICC - Immunocytochemistry | FCM - Flow Cytometry | ELISA - Enzyme-linked Immunosorbent Assay | IP - Immunoprecipitation

#30294

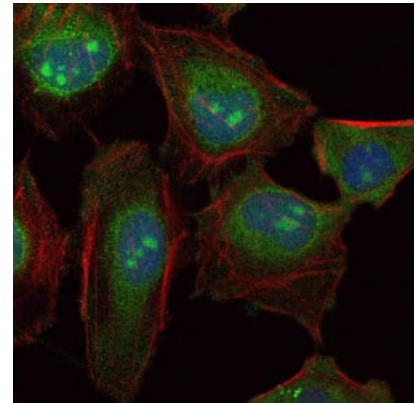
Mouse Monoclonal Antibody to SKP1



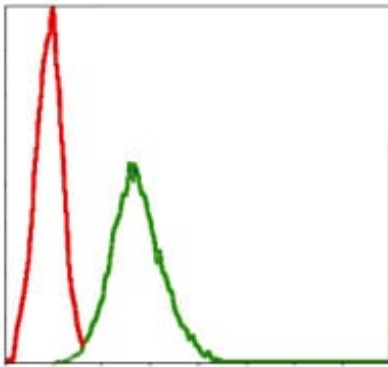
Black line: Control Antigen (100 ng); Purple line: Antigen(10ng); Blue line: Antigen (50 ng); Red line: Antigen (100 ng);



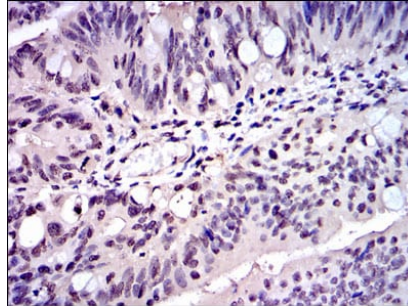
Western blot analysis using SKP1 mouse mAb against Hela (1), NIH/3T3 (2), A431 (3), RAJI (4), PC-12 (5), Cos7 (6), MCF-7 (7) and HepG2 (8) cell lysate.



Immunofluorescence analysis of Hela cells using SKP1 mouse mAb (green). Blue: DRAQ5 fluorescent DNA dye. Red: Actin filaments have been labeled with Alexa Fluor-555 phalloidin.



Flow cytometric analysis of NIH/3T3 cells using SKP1 mouse mAb (green) and negative control (red).



Immunohistochemical analysis of paraffin-embedded human rectum cancer tissues using SKP1 mouse mAb with DAB staining.

For Research Only

Application Key: WB - Western Blot | IHC - Immunohistochemistry | ICC - Immunocytochemistry | FCM - Flow Cytometry | ELISA - Enzyme-linked Immunosorbent Assay | IP - Immunoprecipitation

#30294