

Mouse Monoclonal Antibody to ACP5

Order Information

Catalog#	30508	
Size/Concentration	100µl	50µl
Price(¥)	2180	1280

Description

This gene encodes an iron containing glycoprotein which catalyzes the conversion of orthophosphoric monoester to alcohol and orthophosphate. It is the most basic of the acid phosphatases and is the only form not inhibited by L(+)-tartrate.

Specification

Aliases : TRAP; SPENCDI

Entrez GeneID : 54

Swissprot : P13686

clone : 5C5E7

WB Predicted band size : 36.6kDa

Host/Isotype : Mouse IgG1

Storage : Store at 4°C short term. Aliquot and store at -20°C long term. Avoid freeze/thaw cycles.

Species Reactivity : Human

Immunogen : Purified recombinant fragment of human ACP5 (AA: 221-325) expressed in E. Coli.

Formulation : Purified antibody in PBS with 0.05% sodium azide

Application

WB	1/500 - 1/2000
FCM	1/200 - 1/400
ELISA	1/10000

References

1. Clin Chim Acta. 2011 May 12;412(11-12):963-9.
2. Eur J Gynaecol Oncol. 2011;32(6):615-8.

Call 1-510-860-4615
+86-19375157864
Email Info@ProMab.com
Web www.ProMab.com
www.ProMab.cn

Protocol

WB - www.promab.com/protocol/wb.html
IHC - www.promab.com/protocol/ihc.html
ICC - www.promab.com/protocol/icc.html
HCM - www.promab.com/protocol/hcm.html

Antigen Sequence is available upon request.

Products and Services

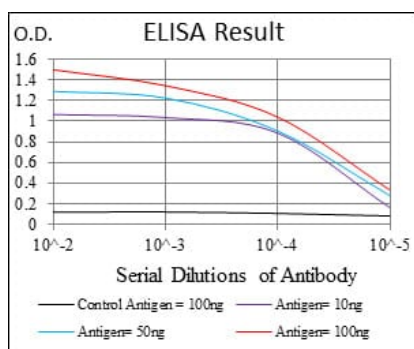
- Mouse Monoclonal Antibody
- Rat Monoclonal Antibody
- Human Antibody
- Hybridoma Sequencing
- Polyclonal Antibody

For Research Only

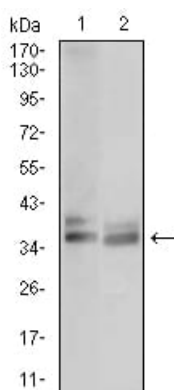
Application Key:WB - Western Blot | IHC - Immunohistochemistry | ICC - Immunocytochemistry | FCM - Flow Cytometry | ELISA - Enzyme-linked Immunosorbent Assay | IP - Immunoprecipitation

#30508

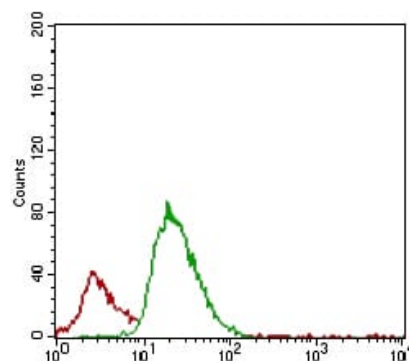
Mouse Monoclonal Antibody to ACP5



Black line: Control Antigen (100 ng); Purple line: Antigen(10ng); Blue line: Antigen (50 ng); Red line: Antigen (100 ng);



Western blot analysis using ACP5 mouse mAb against JURKAT (1) and OCM-1 (2) cell lysate.



Flow cytometric analysis of JURKAT cells using ACP5 mouse mAb (green) and negative control (red).

For Research Only

Application Key: WB - Western Blot | IHC - Immunohistochemistry | ICC - Immunocytochemistry | FCM - Flow Cytometry | ELISA - Enzyme-linked Immunosorbent Assay | IP - Immunoprecipitation

#30508