

Mouse Monoclonal Antibody to NAPSA

Order Information

Catalog#	30515	
Size/Concentration	100µl	50µl
Price(¥)	2180	1280

Description

The activation peptides of aspartic proteinases plays role as inhibitors of the active site. These peptide segments, or pro-parts, are deemed important for correct folding, targeting, and control of the activation of aspartic proteinase zymogens.

The pronapsin A gene is expressed predominantly in lung and kidney. Its translation product is predicted to be a fully functional, glycosylated aspartic proteinase precursor containing an RGD motif and an additional 18 residues at its C-terminus.

Specification

Aliases : KAP; Kdap; NAP1; NAPA; SNAPA

Entrez GeneID : 9476

Swissprot : O96009

clone : 10C4B8

WB Predicted band size : 45.4kDa

Host/Isotype : Mouse IgG1

Storage : Store at 4°C short term. Aliquot and store at -20°C long term. Avoid freeze/thaw cycles.

Species Reactivity : Human,Rat

Immunogen : Purified recombinant fragment of human NAPSA (AA: 20-158) expressed in E. Coli.

Formulation : Purified antibody in PBS with 0.05% sodium azide

Application

WB	1/500 - 1/2000
IHC	1/200 - 1/1000
ELISA	1/10000

References

1. Lung Cancer. 2012 Jul;77(1):156-61.
2. Cancer Cytopathol. 2011 Oct 25;119(5):335-45.

Call 1-510-860-4615

+86-19375157864

Email Info@ProMab.com

Web www.ProMab.com

www.ProMab.cn

Protocol

WB - www.promab.com/protocol/wb.html

IHC - www.promab.com/protocol/ihc.html

ICC - www.promab.com/protocol/icc.html

HCM - www.promab.com/protocol/hcm.html

Antigen Sequence is available upon request.

Products and Services

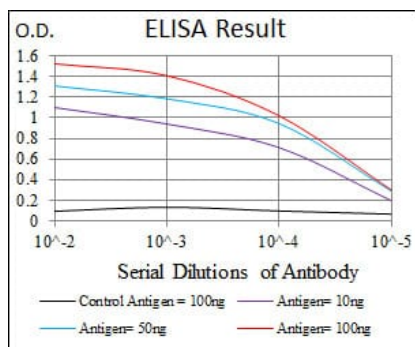
- Mouse Monoclonal Antibody
- Rat Monoclonal Antibody
- Human Antibody
- Hybridoma Sequencing
- Polyclonal Antibody

For Research Only

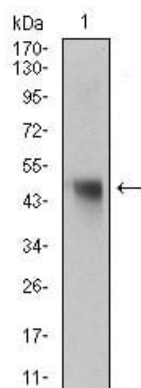
Application Key:WB - Western Blot | IHC - Immunohistochemistry | ICC - Immunocytochemistry | FCM - Flow Cytometry | ELISA - Enzyme-linked Immunosorbent Assay | IP - Immunoprecipitation

#30515

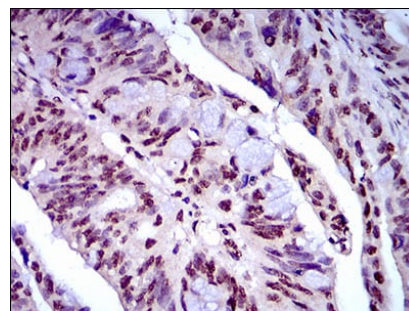
Mouse Monoclonal Antibody to NAPSA



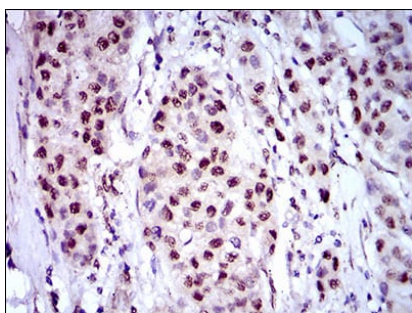
Black line: Control Antigen (100 ng); Purple line: Antigen(10ng); Blue line: Antigen (50 ng); Red line: Antigen (100 ng);



Western blot analysis using NAPSA mouse mAb against rat liver tissue lysate.



Immunohistochemical analysis of paraffin-embedded human rectum cancer tissues using NAPSA mouse mAb with DAB staining.



Immunohistochemical analysis of paraffin-embedded human liver cancer tissues using NAPSA mouse mAb with DAB staining.

For Research Only

Application Key: WB - Western Blot | IHC - Immunohistochemistry | ICC - Immunocytochemistry | FCM - Flow Cytometry | ELISA - Enzyme-linked Immunosorbent Assay | IP - Immunoprecipitation

#30515