

Mouse Monoclonal Antibody to GPNMB

Order Information

Catalog#	30520	
Size/Concentration	100µl	50µl
Price(¥)	2180	1280

Description

The protein encoded by this gene is a type I transmembrane glycoprotein which shows homology to the pMEL17 precursor, a melanocyte-specific protein. GPNMB shows expression in the lowly metastatic human melanoma cell lines and xenografts but does not show expression in the highly metastatic cell lines. GPNMB may be involved in growth delay and reduction of metastatic potential. Two transcript variants encoding different isoforms have been found for this gene.

Specification

Aliases : NMB; HGFN

Entrez GeneID : 10457

Swissprot : Q14956

clone : 7C10E5

WB Predicted band size : 64kDa

Host/Isotype : Mouse IgG1

Storage : Store at 4°C short term. Aliquot and store at -20°C long term. Avoid freeze/thaw cycles.

Species Reactivity : Human

Immunogen : Purified recombinant fragment of human GPNMB (AA: 31-260) expressed in E. Coli.

Formulation : Purified antibody in PBS with 0.05% sodium azide

Application

WB	1/500 - 1/2000
IHC	1/200 - 1/1000
ELISA	1/10000

References

1. Prostate. 2012 Sep 15;72(13):1431-42.
2. Melanoma Res. 2010 Jun;20(3):184-90.

Call 1-510-860-4615

+86-19375157864

Email Info@ProMab.com

Web www.ProMab.com

www.ProMab.cn

Protocol

WB - www.promab.com/protocol/wb.html

IHC - www.promab.com/protocol/ihc.html

ICC - www.promab.com/protocol/icc.html

HCM - www.promab.com/protocol/hcm.html

Antigen Sequence is available upon request.

Products and Services

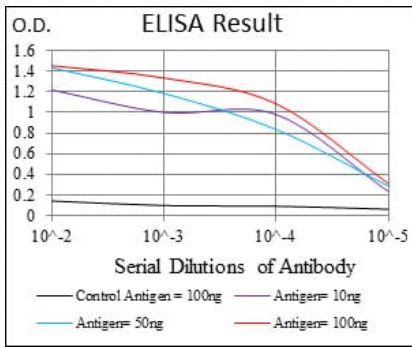
- Mouse Monoclonal Antibody
- Rat Monoclonal Antibody
- Human Antibody
- Hybridoma Sequencing
- Polyclonal Antibody

For Research Only

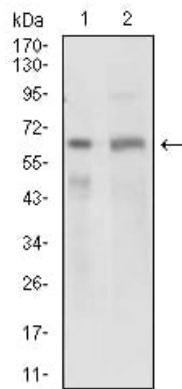
Application Key:WB - Western Blot | IHC - Immunohistochemistry | ICC - Immunocytochemistry | FCM - Flow Cytometry | ELISA - Enzyme-linked Immunosorbent Assay | IP - Immunoprecipitation

#30520

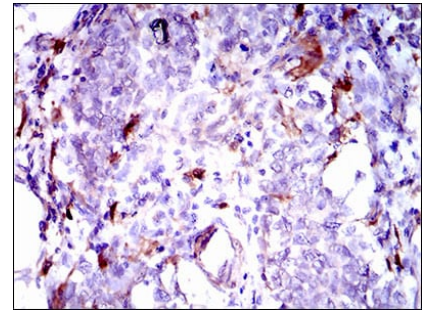
Mouse Monoclonal Antibody to GPNMB



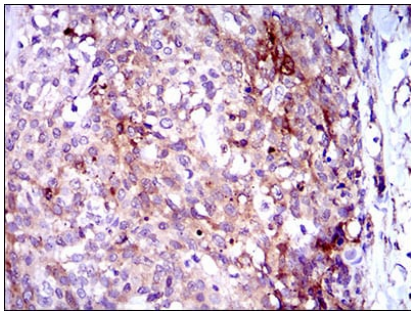
Black line: Control Antigen (100 ng); Purple line: Antigen(10ng); Blue line: Antigen (50 ng); Red line: Antigen (100 ng);



Western blot analysis using GPNMB mouse mAb against PANC1 (1) and PC-3 (2) cell lysate.



Immunohistochemical analysis of paraffin-embedded human breast cancer tissues using GPNMB mouse mAb with DAB staining.



Immunohistochemical analysis of paraffin-embedded human esophagus cancer tissues using GPNMB mouse mAb with DAB staining.

For Research Only

Application Key: WB - Western Blot | IHC - Immunohistochemistry | ICC - Immunocytochemistry | FCM - Flow Cytometry | ELISA - Enzyme-linked Immunosorbent Assay | IP - Immunoprecipitation

#30520