

Mouse Monoclonal Antibody to IL2RA

Order Information

Catalog#	30522	
Size/Concentration	100µl	50µl
Price(¥)	2180	1280

Description

The interleukin 2 (IL2) receptor alpha (IL2RA) and beta (IL2RB) chains, together with the common gamma chain (IL2RG), constitute the high-affinity IL2 receptor. Homodimeric alpha chains (IL2RA) result in low-affinity receptor, while homodimeric beta (IL2RB) chains produce a medium-affinity receptor. Normally an integral-membrane protein, soluble IL2RA has been isolated and determined to result from extracellular proteolysis. Alternately-spliced IL2RA mRNAs have been isolated, but the significance of each is presently unknown. Mutations in this gene are associated with interleukin 2 receptor alpha deficiency.

Specification

Aliases : CD25; IL2R; TCGFR; IDDM10

Entrez GeneID : 3559

Swissprot : P01589

clone : 1B5D12

WB Predicted band size : 30.8kDa

Host/Isotype : Mouse IgG1

Storage : Store at 4°C short term. Aliquot and store at -20°C long term. Avoid freeze/thaw cycles.

Species Reactivity : Human, Mouse, Monkey, Rat

Immunogen : Purified recombinant fragment of human IL2RA (AA: 34-139) expressed in E. Coli.

Formulation : Purified antibody in PBS with 0.05% sodium azide

Application

WB	1/500 - 1/2000
IHC	1/200 - 1/1000
ICC	1/200 - 1/1000
ELISA	1/10000

References

1. Ann Hematol. 2012 Oct;91(10):1597-602.
2. Transplant Proc. 2012 May;44(4):1139-42.

Call 1-510-860-4615
+86-19375157864
Email Info@ProMab.com
Web www.ProMab.com
www.ProMab.cn

Protocol

WB - www.promab.com/protocol/wb.html
IHC - www.promab.com/protocol/ihc.html
ICC - www.promab.com/protocol/icc.html
HCM - www.promab.com/protocol/hcm.html

Antigen Sequence is available upon request.

Products and Services

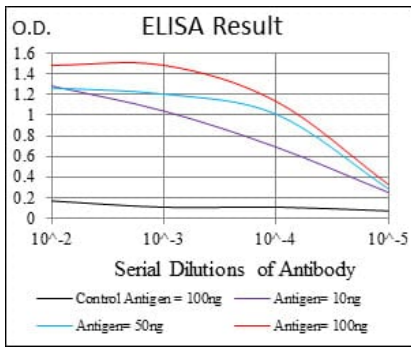
- Mouse Monoclonal Antibody
- Rat Monoclonal Antibody
- Human Antibody
- Hybridoma Sequencing
- Polyclonal Antibody

For Research Only

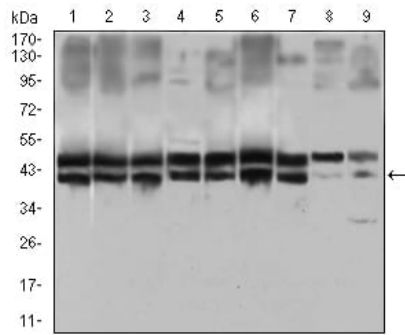
Application Key: WB - Western Blot | IHC - Immunohistochemistry | ICC - Immunocytochemistry | FCM - Flow Cytometry | ELISA - Enzyme-linked Immunosorbent Assay | IP - Immunoprecipitation

#30522

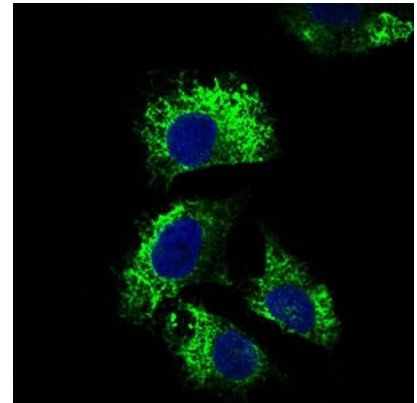
Mouse Monoclonal Antibody to IL2RA



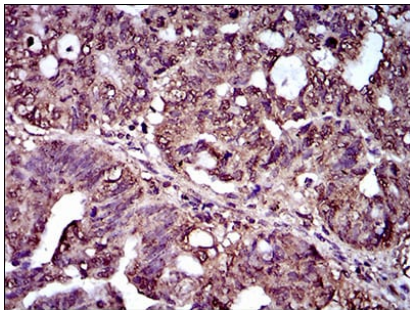
Black line: Control Antigen (100 ng); Purple line: Antigen(10ng); Blue line: Antigen (50 ng); Red line: Antigen (100 ng);



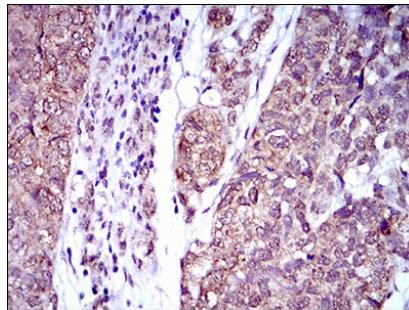
Western blot analysis using IL2RA mouse mAb against Hela (1), MOLT4 (2), HEK293 (3), A549 (4), Jurkat (5), K562 (6), Cos7 (7), PC-12 (8) and NIH/3T3 (9) cell lysate.



Immunofluorescence analysis of Hela cells using IL2RA mouse mAb (green). Blue: DRAQ5 fluorescent DNA dye.



Immunohistochemical analysis of paraffin-embedded human rectum cancer tissues using IL2RA mouse mAb with DAB staining.



Immunohistochemical analysis of paraffin-embedded human bladder cancer tissues using IL2RA mouse mAb with DAB staining.

For Research Only

Application Key: WB - Western Blot | IHC - Immunohistochemistry | ICC - Immunocytochemistry | FCM - Flow Cytometry | ELISA - Enzyme-linked Immunosorbent Assay | IP - Immunoprecipitation

#30522