

Mouse Monoclonal Antibody to TIP60

Order Information

Catalog#	30766	
Size/Concentration	100µl	50µl
Price(¥)	2180	1280

Description

The protein encoded by this gene belongs to the MYST family of histone acetyl transferases (HATs) and was originally isolated as an HIV-1 TAT-interactive protein. HATs play important roles in regulating chromatin remodeling, transcription and other nuclear processes by acetylating histone and nonhistone proteins. This protein is a histone acetylase that has a role in DNA repair and apoptosis and is thought to play an important role in signal transduction. Alternative splicing of this gene results in multiple transcript variants.

Specification

Aliases :	TIP; ESA1; PLIP; KAT5; cPLA2; HTATIP; ZC2HC5; HTATIP1
Entrez GeneID :	10524
Swissprot :	Q92993
clone :	2A11H7
WB Predicted band size :	58.6kDa
Host/Isotype :	Mouse IgG1
Storage :	Store at 4°C short term. Aliquot and store at -20°C long term. Avoid freeze/thaw cycles.
Species Reactivity :	Human
Immunogen :	Purified recombinant fragment of human TIP60 (AA: 18-208) expressed in E. Coli.
Formulation :	Purified antibody in PBS with 0.05% sodium azide

Application

WB	1/500 - 1/2000
FCM	1/200 - 1/400
ELISA	1/10000

References

Anticancer Res. 2011 Jan;31(1):77-9.
J Invest Dermatol. 2012 Nov;132(11):2632-41.

Call 1-510-860-4615
+86-19375157864
Email Info@ProMab.com
Web www.ProMab.com
www.ProMab.cn

Protocol

WB - www.promab.com/protocol/wb.html
IHC - www.promab.com/protocol/ihc.html
ICC - www.promab.com/protocol/icc.html
HCM - www.promab.com/protocol/hcm.html
Antigen Sequence is available upon request.

Products and Services

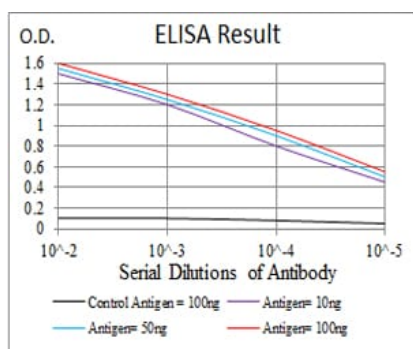
- Mouse Monoclonal Antibody
- Rat Monoclonal Antibody
- Human Antibody
- Hybridoma Sequencing
- Polyclonal Antibody

For Research Only

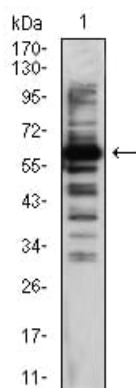
Application Key:WB - Western Blot | IHC - Immunohistochemistry | ICC - Immunocytochemistry | FCM - Flow Cytometry | ELISA - Enzyme-linked Immunosorbent Assay | IP - Immunoprecipitation

#30766

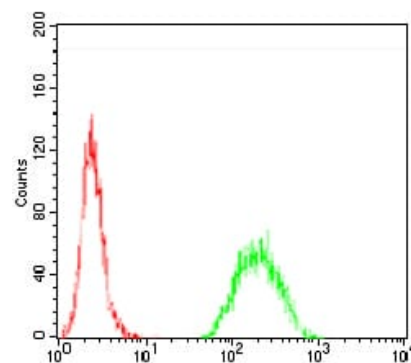
Mouse Monoclonal Antibody to TIP60



Black line: Control Antigen (100 ng); Purple line: Antigen(10ng); Blue line: Antigen (50 ng); Red line: Antigen (100 ng);



Western blot analysis using TIP60 mouse mAb against HeLa (1) cell lysate.



Flow cytometric analysis of HeLa cells using TIP60 mouse mAb (green) and negative control (red).

For Research Only

Application Key: WB - Western Blot | IHC - Immunohistochemistry | ICC - Immunocytochemistry | FCM - Flow Cytometry | ELISA - Enzyme-linked Immunosorbent Assay | IP - Immunoprecipitation

#30766