

# Mouse Monoclonal Antibody to KBTBD8

## Order Information

Catalog#	30768	
Size/Concentration	100µl	50µl
Price(¥)	2180	1280

## Description

KBTBD8 (kelch repeat and BTB (POZ) domain containing 8) is a protein-coding gene. An important paralog of this gene is KLHL21.

## Specification

Aliases : TA-KRP

Entrez GeneID : 84541

Swissprot : Q8NFI9

clone : 7G8A6

WB Predicted band size : 68.8kDa

Host/Isotype : Mouse IgG1

Storage : Store at 4°C short term. Aliquot and store at -20°C long term. Avoid freeze/thaw cycles.

Species Reactivity : Human

Immunogen : Purified recombinant fragment of human KBTBD8 (AA: 264-464) expressed in E. Coli.

Formulation : Purified antibody in PBS with 0.05% sodium azide

## Application

WB	1/500 - 1/2000
FCM	1/200 - 1/400
ELISA	1/10000

## References

Cell Div. 2013 Apr 11;8(1):3.

J Hum Genet. 2010 Jan;55(1):27-31.

Call 1-510-860-4615

+86-19375157864

Email [Info@ProMab.com](mailto:Info@ProMab.com)

Web [www.ProMab.com](http://www.ProMab.com)

[www.ProMab.cn](http://www.ProMab.cn)

## Protocol

WB - [www.promab.com/protocol/wb.html](http://www.promab.com/protocol/wb.html)

IHC - [www.promab.com/protocol/ihc.html](http://www.promab.com/protocol/ihc.html)

ICC - [www.promab.com/protocol/icc.html](http://www.promab.com/protocol/icc.html)

HCM - [www.promab.com/protocol/hcm.html](http://www.promab.com/protocol/hcm.html)

**Antigen Sequence** is available upon request.

## Products and Services

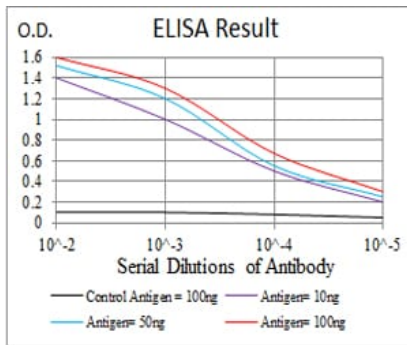
- Mouse Monoclonal Antibody
- Rat Monoclonal Antibody
- Human Antibody
- Hybridoma Sequencing
- Polyclonal Antibody

**For Research Only**

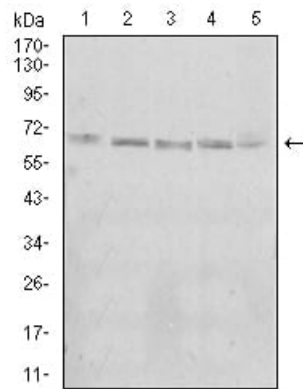
**Application Key:** WB - Western Blot | IHC - Immunohistochemistry | ICC - Immunocytochemistry | FCM - Flow Cytometry | ELISA - Enzyme-linked Immunosorbent Assay | IP - Immunoprecipitation

# #30768

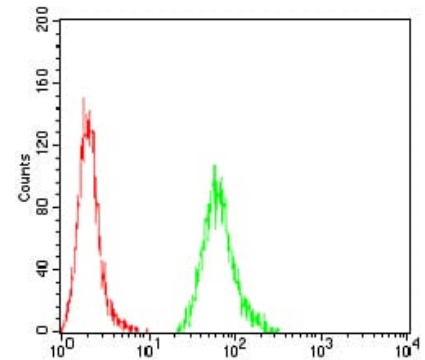
# Mouse Monoclonal Antibody to KBTBD8



Black line: Control Antigen (100 ng); Purple line: Antigen(10ng); Blue line: Antigen (50 ng); Red line: Antigen (100 ng);



Western blot analysis using KBTBD8 mouse mAb against A431 (1), Jurkat (2), Hela (3), K562 (4), and HEK293 (5) cell lysate.



Flow cytometric analysis of A431 cells using KBTBD8 mouse mAb (green) and negative control (red).

**For Research Only**

**Application Key:** WB - Western Blot | IHC - Immunohistochemistry | ICC - Immunocytochemistry | FCM - Flow Cytometry | ELISA - Enzyme-linked Immunosorbent Assay | IP - Immunoprecipitation

#30768