

Mouse Monoclonal Antibody to EZR

Order Information

Catalog#	30771	
Size/Concentration	100µl	50µl
Price(¥)	2180	1280

Description

The cytoplasmic peripheral membrane protein encoded by this gene functions as a protein-tyrosine kinase substrate in microvilli. As a member of the ERM protein family, this protein serves as an intermediate between the plasma membrane and the actin cytoskeleton. This protein plays a key role in cell surface structure adhesion, migration and organization, and it has been implicated in various human cancers. A pseudogene located on chromosome 3 has been identified for this gene. Alternatively spliced variants have also been described for this gene.

Specification

Aliases : CVL; CVIL; VIL2; HEL-S-105

Entrez GeneID : 7430

Swissprot : P15311

clone : 6F1C3

WB Predicted band size : 69.4kDa

Host/Isotype : Mouse IgG1

Storage : Store at 4°C short term. Aliquot and store at -20°C long term. Avoid freeze/thaw cycles.

Species Reactivity : Human

Immunogen : Purified recombinant fragment of human EZR (AA: 292-464) expressed in E. Coli.

Formulation : Purified antibody in PBS with 0.05% sodium azide

Application

WB	1/500 - 1/2000
ICC	1/200 - 1/1000
FCM	1/200 - 1/400
ELISA	1/10000

References

BMC Cancer. 2013 Nov 4;13:520.
Cell Oncol (Dordr). 2013 Dec;36(6):485-91.

Call 1-510-860-4615
+86-19375157864
Email Info@ProMab.com
Web www.ProMab.com
www.ProMab.cn

Protocol

WB - www.promab.com/protocol/wb.html

IHC - www.promab.com/protocol/ihc.html

ICC - www.promab.com/protocol/icc.html

HCM - www.promab.com/protocol/hcm.html

Antigen Sequence is available upon request.

Products and Services

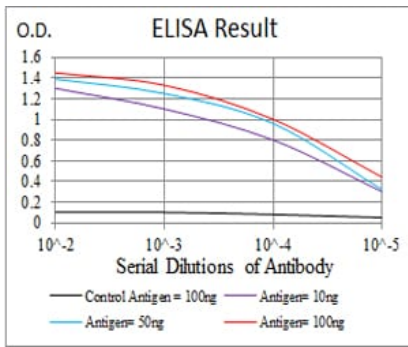
- Mouse Monoclonal Antibody
- Rat Monoclonal Antibody
- Human Antibody
- Hybridoma Sequencing
- Polyclonal Antibody

For Research Only

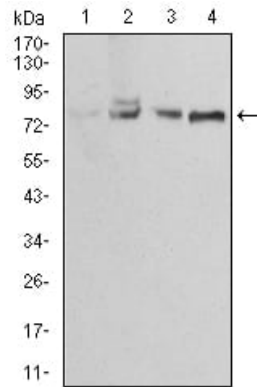
Application Key:WB - Western Blot | IHC - Immunohistochemistry | ICC - Immunocytochemistry | FCM - Flow Cytometry | ELISA - Enzyme-linked Immunosorbent Assay | IP - Immunoprecipitation

#30771

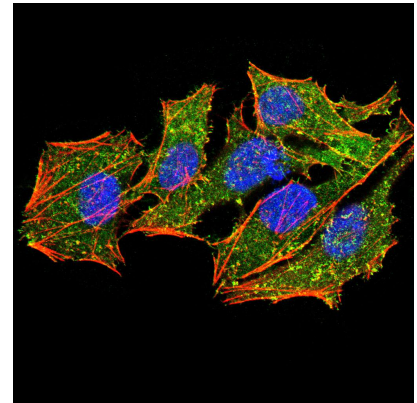
Mouse Monoclonal Antibody to EZR



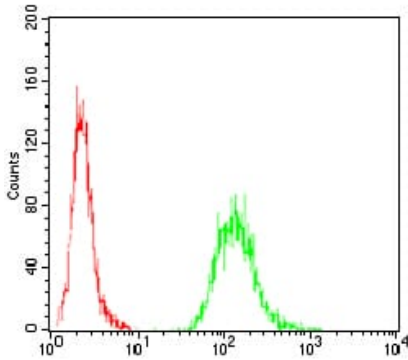
Black line: Control Antigen (100 ng); Purple line: Antigen(10ng); Blue line: Antigen (50 ng); Red line: Antigen (100 ng);



Western blot analysis using EZR mouse mAb against Jurkat (1), A431 (2), MCF-7 (3) and HeLa (4) cell lysate.



Immunofluorescence analysis of HeLa cells using EZR mouse mAb (green). Blue: DRAQ5 fluorescent DNA dye. Red: Actin filaments have been labeled with Alexa Fluor-555 phalloidin. Secondary antibody from Fisher (Cat#: 35503)



Flow cytometric analysis of A431 cells using EZR mouse mAb (green) and negative control (red).

For Research Only

Application Key: WB - Western Blot | IHC - Immunohistochemistry | ICC - Immunocytochemistry | FCM - Flow Cytometry | ELISA - Enzyme-linked Immunosorbent Assay | IP - Immunoprecipitation

#30771