

Mouse Monoclonal Antibody to CTSD

Order Information

Catalog#	30778	
Size/Concentration	100µl	50µl
Price(¥)	2180	1280

Description

This gene encodes a lysosomal aspartyl protease composed of a dimer of disulfide-linked heavy and light chains, both produced from a single protein precursor. This proteinase, which is a member of the peptidase C1 family, has a specificity similar to but narrower than that of pepsin A. Transcription of this gene is initiated from several sites, including one which is a start site for an estrogen-regulated transcript. Mutations in this gene are involved in the pathogenesis of several diseases, including breast cancer and possibly Alzheimer disease.

Specification

Aliases	: CPSD; CLN10; HEL-S-130P
Entrez GeneID	: 1509
Swissprot	: P07339
clone	: 2H4H5
WB Predicted band size	: 44.6kDa
Host/Isotype	: Mouse IgG1
Storage	: Store at 4°C short term. Aliquot and store at -20°C long term. Avoid freeze/thaw cycles.
Species Reactivity	: Human
Immunogen	: Purified recombinant fragment of human CTSD (AA: 1-100) expressed in E. Coli.
Formulation	: Purified antibody in PBS with 0.05% sodium azide

Application

IHC	1/200 - 1/1000
ELISA	1/10000

References

Clin Biochem. 2013 Dec;46(18):1808-11.
Cancer Lett. 2012 Oct 28;323(2):208-14.

Call 1-510-860-4615
+86-19375157864
Email Info@ProMab.com
Web www.ProMab.com
www.ProMab.cn

Protocol

WB - www.promab.com/protocol/wb.html
IHC - www.promab.com/protocol/ihc.html
ICC - www.promab.com/protocol/icc.html
HCM - www.promab.com/protocol/hcm.html
Antigen Sequence is available upon request.

Products and Services

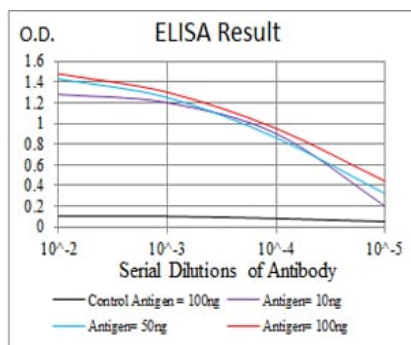
- Mouse Monoclonal Antibody
- Rat Monoclonal Antibody
- Human Antibody
- Hybridoma Sequencing
- Polyclonal Antibody

For Research Only

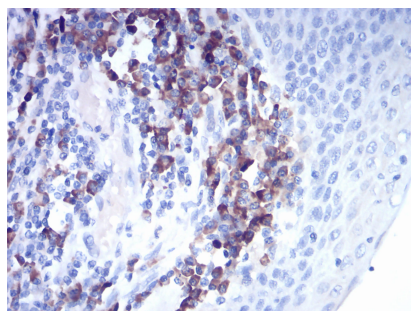
Application Key: WB - Western Blot | IHC - Immunohistochemistry | ICC - Immunocytochemistry | FCM - Flow Cytometry | ELISA - Enzyme-linked Immunosorbent Assay | IP - Immunoprecipitation

#30778

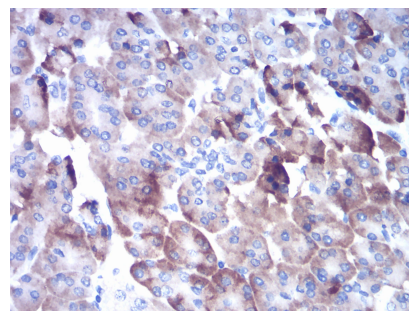
Mouse Monoclonal Antibody to CTSD



Black line: Control Antigen (100 ng); Purple line: Antigen(10ng); Blue line: Antigen (50 ng); Red line: Antigen (100 ng);



Immunohistochemical analysis of paraffin-embedded human esophagus tissues using CTSD mouse mAb with DAB staining.



Immunohistochemical analysis of paraffin-embedded human pancreas tissues using CTSD mouse mAb with DAB staining.

For Research Only

Application Key: WB - Western Blot | IHC - Immunohistochemistry | ICC - Immunocytochemistry | FCM - Flow Cytometry | ELISA - Enzyme-linked Immunosorbent Assay | IP - Immunoprecipitation

#30778