

Mouse Monoclonal Antibody to LGALS1

Order Information

Catalog#	31021	
Size/Concentration	100µl	50µl
Price(¥)	2180	1280

Description

The galectins are a family of beta-galactoside-binding proteins implicated in modulating cell-cell and cell-matrix interactions. This gene product may act as an autocrine negative growth factor that regulates cell proliferation.

Specification

Aliases : GBP; GAL1

Entrez GeneID : 3956

Swissprot : P09382

clone : 1H11C5

WB Predicted band size : 14.7kDa

Host/Isotype : Mouse IgG1

Storage : Store at 4°C short term. Aliquot and store at -20°C long term. Avoid freeze/thaw cycles.

Species Reactivity : Human

Immunogen : Purified recombinant fragment of human LGALS1 (AA: 1-135) expressed in E. Coli.

Formulation : Purified antibody in PBS with 0.05% sodium azide

Application

IHC	1/200 - 1/1000
FCM	1/200 - 1/400
ELISA	1/10000

References

- 1.Cancer Sci. 2014 Nov;105(11):1402-10.
- 2.Lung Cancer. 2014 Apr;84(1):73-8.

Call 1-510-860-4615
+86-19375157864
Email Info@ProMab.com
Web www.ProMab.com
www.ProMab.cn

Protocol

WB - www.promab.com/protocol/wb.html
IHC - www.promab.com/protocol/ihc.html
ICC - www.promab.com/protocol/icc.html
HCM - www.promab.com/protocol/hcm.html

Antigen Sequence is available upon request.

Products and Services

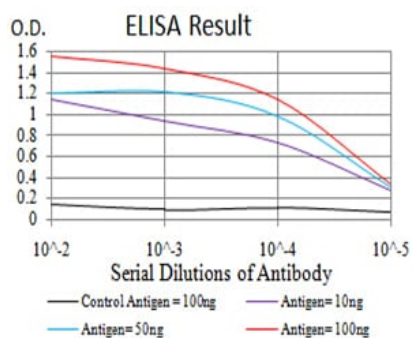
- Mouse Monoclonal Antibody
- Rat Monoclonal Antibody
- Human Antibody
- Hybridoma Sequencing
- Polyclonal Antibody

For Research Only

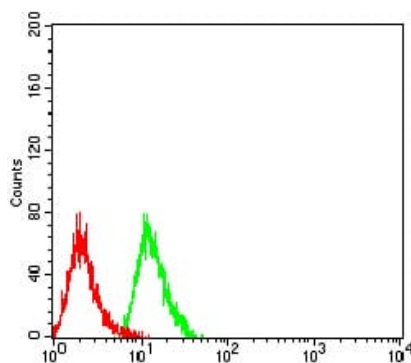
Application Key:WB - Western Blot | IHC - Immunohistochemistry | ICC - Immunocytochemistry | FCM - Flow Cytometry | ELISA - Enzyme-linked Immunosorbent Assay | IP - Immunoprecipitation

#31021

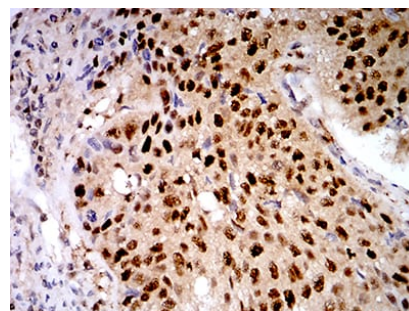
Mouse Monoclonal Antibody to LGALS1



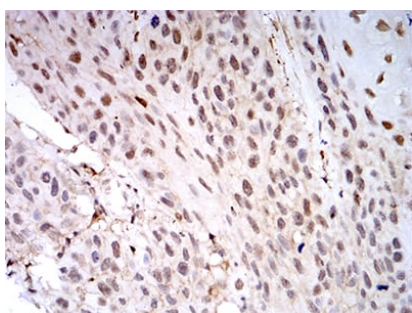
Black line: Control Antigen (100 ng);Purple line: Antigen (10ng); Blue line: Antigen (50 ng); Red line:Antigen (100 ng)



Flow cytometric analysis of HeLa cells using LGALS1 mouse mAb (green) and negative control (red).



Immunohistochemical analysis of paraffin-embedded human lung cancer tissues using LGALS1 mouse mAb with DAB staining.



Immunohistochemical analysis of paraffin-embedded human esophageal cancer tissues using LGALS1 mouse mAb with DAB staining.

For Research Only

Application Key:WB - Western Blot | IHC - Immunohistochemistry | ICC - Immunocytochemistry | FCM - Flow Cytometry | ELISA - Enzyme-linked Immunosorbent Assay | IP - Immunoprecipitation

#31021