

Mouse Monoclonal Antibody to CD2

Order Information

Catalog#	31026	
Size/Concentration	100µl	50µl
Price(¥)	2180	1280

Description

CD2 is a surface antigen of the human T-lymphocyte lineage that is expressed on all peripheral blood T cells (summarized by Sewell et al., 1986 [PubMed 3490670]). It is one of the earliest T-cell markers, being present on more than 95% of thymocytes; it is also found on some natural killer cells but not on B lymphocytes. Monoclonal antibodies directed against CD2 inhibit the formation of rosettes with sheep erythrocytes, indicating that CD2 is the erythrocyte receptor or is closely associated with it.

Specification

Aliases : T11; SRBC; LFA-2

Entrez GeneID : 914

Swissprot : P06729

clone : 3D1E3

WB Predicted band size : 39.4kDa

Host/Isotype : Mouse IgG1

Storage : Store at 4°C short term. Aliquot and store at -20°C long term. Avoid freeze/thaw cycles.

Species Reactivity : Mouse

Immunogen : Purified recombinant fragment of human CD2 (AA: 25-140) expressed in E. Coli.

Formulation : Purified antibody in PBS with 0.05% sodium azide

Application

WB	1/500 - 1/2000
IHC	1/200 - 1/1000
FCM	1/200 - 1/400
ELISA	1/10000

References

1. J Virol. 2013 Aug;87(16):9148-58.
2. PLoS One. 2012;7(10):e47664.

Call 1-510-860-4615

+86-19375157864

Email Info@ProMab.com

Web www.ProMab.com

www.ProMab.cn

Protocol

WB - www.promab.com/protocol/wb.html

IHC - www.promab.com/protocol/ihc.html

ICC - www.promab.com/protocol/icc.html

HCM - www.promab.com/protocol/hcm.html

Antigen Sequence is available upon request.

Products and Services

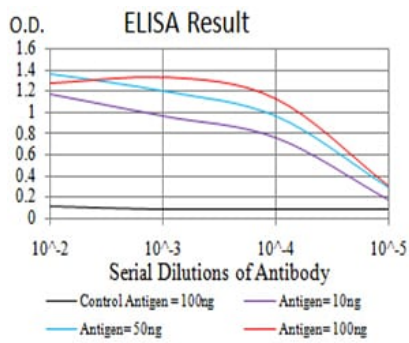
- Mouse Monoclonal Antibody
- Rat Monoclonal Antibody
- Human Antibody
- Hybridoma Sequencing
- Polyclonal Antibody

For Research Only

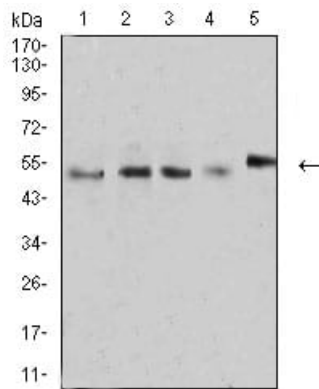
Application Key: WB - Western Blot | IHC - Immunohistochemistry | ICC - Immunocytochemistry | FCM - Flow Cytometry | ELISA - Enzyme-linked Immunosorbent Assay | IP - Immunoprecipitation

#31026

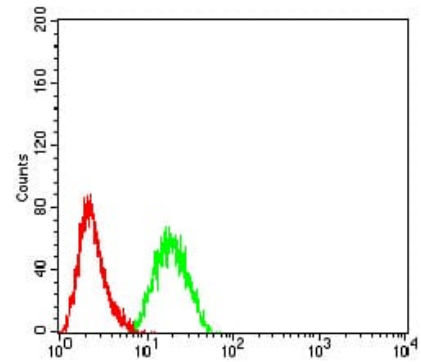
Mouse Monoclonal Antibody to CD2



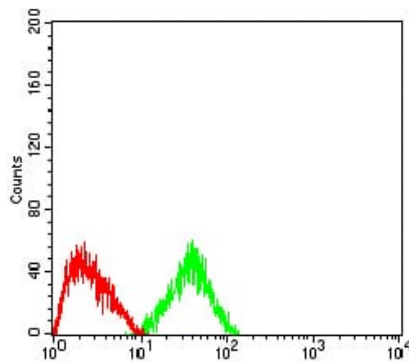
Black line: Control Antigen (100 ng); Purple line: Antigen (10ng); Blue line: Antigen (50 ng); Red line: Antigen (100 ng)



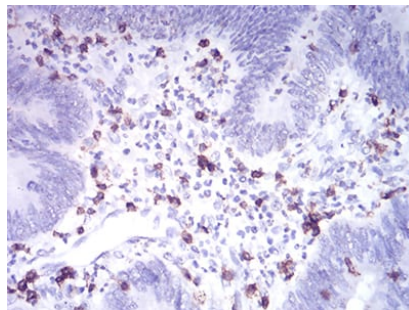
Western blot analysis using CD2 mouse mAb against MOLT4 (1), MCF-7 (2), L1210 (3), U937 (4), and NIH3T3 (5) cell lysate.



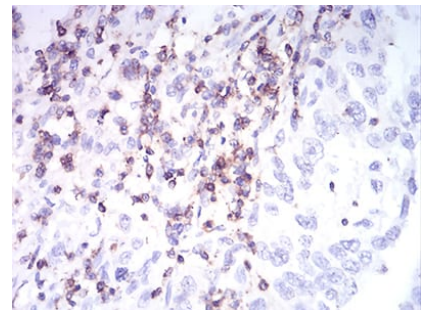
Flow cytometric analysis of HeLa cells using CD2 mouse mAb (green) and negative control (red).



Flow cytometric analysis of HepG2 cells using CD2 mouse mAb (green) and negative control (red).



Immunohistochemical analysis of paraffin-embedded human rectum cancer tissues using CD2 mouse mAb with DAB staining.



Immunohistochemical analysis of paraffin-embedded human endometrial cancer tissues using CD2 mouse mAb with DAB staining.

For Research Only

Application Key: WB - Western Blot | IHC - Immunohistochemistry | ICC - Immunocytochemistry | FCM - Flow Cytometry | ELISA - Enzyme-linked Immunosorbent Assay | IP - Immunoprecipitation

#31026