

# Mouse Monoclonal Antibody to CD274

## Order Information

Catalog#	31027	
Size/Concentration	100µl	50µl
Price(¥)	2180	1280

## Description

This gene encodes an immune inhibitory receptor ligand that is expressed by hematopoietic and non-hematopoietic cells, such as T cells and B cells and various types of tumor cells. The encoded protein is a type I transmembrane protein that has immunoglobulin V-like and C-like domains. Interaction of this ligand with its receptor inhibits T-cell activation and cytokine production. During infection or inflammation of normal tissue, this interaction is important for preventing autoimmunity by maintaining homeostasis of the immune response. In tumor microenvironments, this interaction provides an immune escape for tumor cells through cytotoxic T-cell inactivation. Expression of this gene in tumor cells is considered to be prognostic in many types of human malignancies, including colon cancer and renal cell carcinoma. Alternative splicing results in multiple transcript variants.

## Specification

Aliases : B7-H; B7H1; PDL1; PD-L1; PDCD1L1; PDCD1LG1

Entrez GeneID : 29126

Swissprot : Q9NZQ7

clone : 7D2A10

WB Predicted band size : 33.3kDa

Host/Isotype : Mouse IgG2b

Storage : Store at 4°C short term. Aliquot and store at -20°C long term. Avoid freeze/thaw cycles.

Species Reactivity : Human

Immunogen : Purified recombinant fragment of human CD274 (AA: 24-153) expressed in E. Coli.

Formulation : Purified antibody in PBS with 0.05% sodium azide

## Application

FCM	1/200 - 1/400
ELISA	1/10000

## References

1. Anticancer Res. 2015 Oct;35(10):5369-76.
2. Lung Cancer. 2015 Jun;88(3):254-9.

Call 1-510-860-4615  
+86-19375157864  
Email [Info@ProMab.com](mailto:Info@ProMab.com)  
Web [www.ProMab.com](http://www.ProMab.com)  
[www.ProMab.cn](http://www.ProMab.cn)

## Protocol

WB - [www.promab.com/protocol/wb.html](http://www.promab.com/protocol/wb.html)  
IHC - [www.promab.com/protocol/ihc.html](http://www.promab.com/protocol/ihc.html)  
ICC - [www.promab.com/protocol/icc.html](http://www.promab.com/protocol/icc.html)  
HCM - [www.promab.com/protocol/hcm.html](http://www.promab.com/protocol/hcm.html)

**Antigen Sequence** is available upon request.

## Products and Services

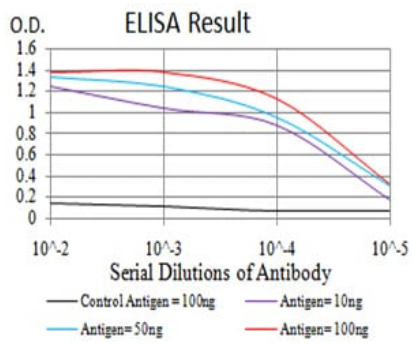
- Mouse Monoclonal Antibody
- Rat Monoclonal Antibody
- Human Antibody
- Hybridoma Sequencing
- Polyclonal Antibody

**For Research Only**

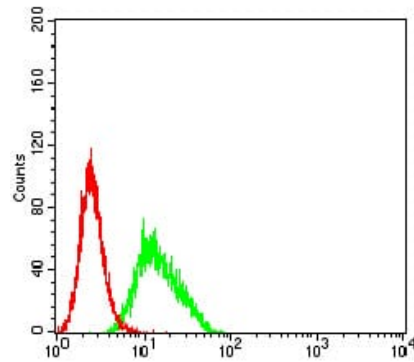
**Application Key:** WB - Western Blot | IHC - Immunohistochemistry | ICC - Immunocytochemistry | FCM - Flow Cytometry | ELISA - Enzyme-linked Immunosorbent Assay | IP - Immunoprecipitation

# #31027

# Mouse Monoclonal Antibody to CD274



Black line: Control Antigen (100 ng);Purple line: Antigen (10ng); Blue line: Antigen (50 ng); Red line:Antigen (100 ng)



Flow cytometric analysis of HeLa cells using CD274 mouse mAb (green) and negative control (red).

For Research Only

Application Key:WB - Western Blot | IHC - Immunohistochemistry | ICC - Immunocytochemistry | FCM - Flow Cytometry | ELISA - Enzyme-linked Immunosorbent Assay | IP - Immunoprecipitation

#31027