

# Mouse Monoclonal Antibody to TTF1

## Order Information

Catalog#	31032	
Size/Concentration	100µl	50µl
Price(¥)	2180	1280

## Description

This gene encodes a transcription termination factor that is localized to the nucleolus and plays a critical role in ribosomal gene transcription. The encoded protein mediates the termination of RNA polymerase I transcription by binding to Sal box terminator elements downstream of pre-rRNA coding regions. Alternatively spliced transcript variants encoding multiple isoforms have been observed for this gene. This gene shares the symbol/alias 'TTF1' with another gene, NK2 homeobox 1, also known as thyroid transcription factor 1, which plays a role in the regulation of thyroid-specific gene expression.

## Specification

Aliases : TTF-1; TTF-I

Entrez GeneID : 7270

Swissprot : Q15361

clone : 2F4D8

WB Predicted band size : 103kDa

Host/Isotype : Mouse IgG1

Storage : Store at 4°C short term. Aliquot and store at -20°C long term. Avoid freeze/thaw cycles.

Species Reactivity : Human

Immunogen : Purified recombinant fragment of human TTF1 (AA: 1-150) expressed in E. Coli.

Formulation : Purified antibody in PBS with 0.05% sodium azide

## Application

IHC	1/200 - 1/1000
ICC	1/200 - 1/1000
FCM	1/200 - 1/400
ELISA	1/10000

## References

1. Tumour Biol. 2015 Sep;36(10):8085-92.
2. Chest. 2013 Oct;144(4):1199-206.

Call 1-510-860-4615  
+86-19375157864  
Email [Info@ProMab.com](mailto:Info@ProMab.com)  
Web [www.ProMab.com](http://www.ProMab.com)  
[www.ProMab.cn](http://www.ProMab.cn)

## Protocol

WB - [www.promab.com/protocol/wb.html](http://www.promab.com/protocol/wb.html)  
IHC - [www.promab.com/protocol/ihc.html](http://www.promab.com/protocol/ihc.html)  
ICC - [www.promab.com/protocol/icc.html](http://www.promab.com/protocol/icc.html)  
HCM - [www.promab.com/protocol/hcm.html](http://www.promab.com/protocol/hcm.html)

**Antigen Sequence** is available upon request.

## Products and Services

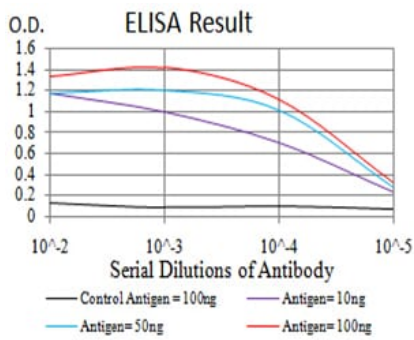
- Mouse Monoclonal Antibody
- Rat Monoclonal Antibody
- Human Antibody
- Hybridoma Sequencing
- Polyclonal Antibody

**For Research Only**

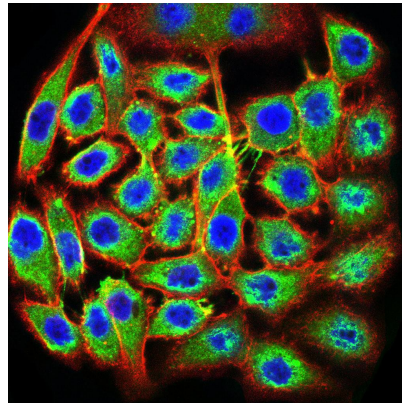
**Application Key:** WB - Western Blot | IHC - Immunohistochemistry | ICC - Immunocytochemistry | FCM - Flow Cytometry | ELISA - Enzyme-linked Immunosorbent Assay | IP - Immunoprecipitation

# #31032

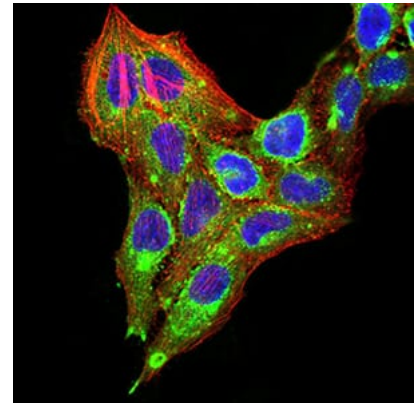
# Mouse Monoclonal Antibody to TTF1



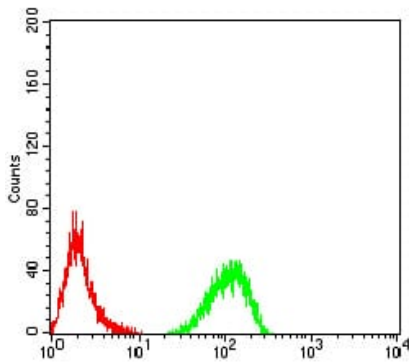
Black line: Control Antigen (100 ng); Purple line: Antigen (10ng); Blue line: Antigen (50 ng); Red line: Antigen (100 ng)



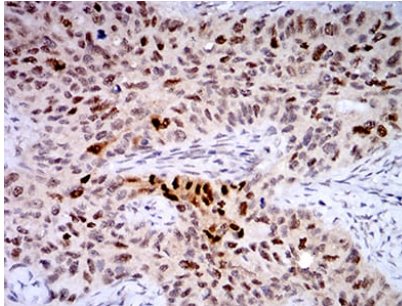
Immunofluorescence analysis of MCF-7 cells using TTF1 mouse mAb (green). Blue: DRAQ5 fluorescent DNA dye. Red: Actin filaments have been labeled with Alexa Fluor- 555 phalloidin. Secondary antibody from Fisher (Cat#: 35503)



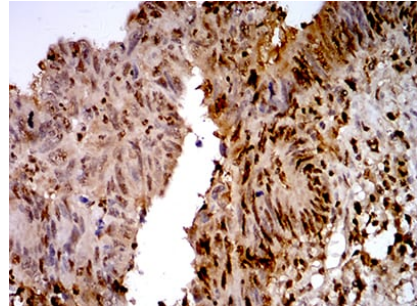
Immunofluorescence analysis of SK-OV-3 cells using TTF1 mouse mAb (green). Blue: DRAQ5 fluorescent DNA dye. Red: Actin filaments have been labeled with Alexa Fluor- 555 phalloidin. Secondary antibody from Fisher (Cat#: 35503)



Flow cytometric analysis of HeLa cells using TTF1 mouse mAb (green) and negative control (red).



Immunohistochemical analysis of paraffin-embedded human cervical cancer tissues using TTF1 mouse mAb with DAB staining.



Immunohistochemical analysis of paraffin-embedded human rectum cancer tissues using TTF1 mouse mAb with DAB staining.

**For Research Only**

**Application Key:** WB - Western Blot | IHC - Immunohistochemistry | ICC - Immunocytochemistry | FCM - Flow Cytometry | ELISA - Enzyme-linked Immunosorbent Assay | IP - Immunoprecipitation

#31032