

Mouse Monoclonal Antibody to DAPP1

Order Information

Catalog#	31035	
Size/Concentration	100µl	50µl
Price(¥)	2180	1280

Description

DAPP1 (Dual Adaptor Of Phosphotyrosine And 3-Phosphoinositides) is a Protein Coding gene. Among its related pathways are Immune System and Downstream signaling events of B Cell Receptor (BCR). GO annotations related to this gene include phospholipid binding and phosphatidylinositol-3,4-bisphosphate binding.

Specification

Aliases : BAM32

Entrez GeneID : 27071

Swissprot : Q9UN19

clone : 2F7A9

WB Predicted band size : 32.2kDa

Host/Isotype : Mouse IgG1

Storage : Store at 4°C short term. Aliquot and store at -20°C long term. Avoid freeze/thaw cycles.

Species Reactivity : Human

Immunogen : Purified recombinant fragment of human DAPP1 (AA: 127-276) expressed in E. Coli.

Formulation : Purified antibody in PBS with 0.05% sodium azide

Application

FCM	1/200 - 1/400
ELISA	1/10000

References

1. J Immunol. 2011 Oct 15;187(8):3972-8.
2. J Immunol. 2004 Nov 1;173(9):5601-9.

Call 1-510-860-4615
+86-19375157864
Email Info@ProMab.com
Web www.ProMab.com
www.ProMab.cn

Protocol

WB - www.promab.com/protocol/wb.html
IHC - www.promab.com/protocol/ihc.html
ICC - www.promab.com/protocol/icc.html
HCM - www.promab.com/protocol/hcm.html

Antigen Sequence is available upon request.

Products and Services

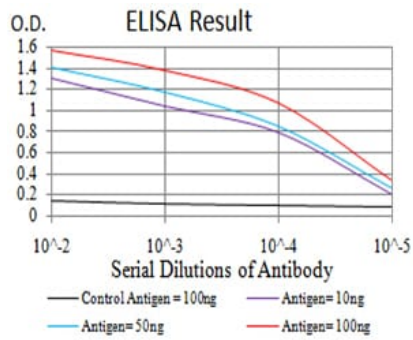
- Mouse Monoclonal Antibody
- Rat Monoclonal Antibody
- Human Antibody
- Hybridoma Sequencing
- Polyclonal Antibody

For Research Only

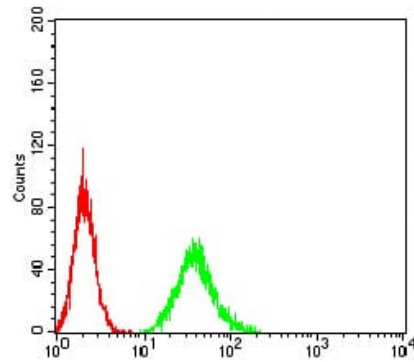
Application Key: WB - Western Blot | IHC - Immunohistochemistry | ICC - Immunocytochemistry | FCM - Flow Cytometry | ELISA - Enzyme-linked Immunosorbent Assay | IP - Immunoprecipitation

#31035

Mouse Monoclonal Antibody to DAPP1



Black line: Control Antigen (100 ng); Purple line: Antigen (10ng); Blue line: Antigen (50 ng); Red line: Antigen (100 ng)



Flow cytometric analysis of A549 cells using DAPP1 mouse mAb (green) and negative control (red).

For Research Only

Application Key: WB - Western Blot | IHC - Immunohistochemistry | ICC - Immunocytochemistry | FCM - Flow Cytometry | ELISA - Enzyme-linked Immunosorbent Assay | IP - Immunoprecipitation

#31035