

Mouse Monoclonal Antibody to ANAPC1

Order Information

| | | |
|--------------------|-------|------|
| Catalog# | 31280 | |
| Size/Concentration | 100µl | 50µl |
| Price(¥) | 2180 | 1280 |

Description

This gene encodes a subunit of the anaphase-promoting complex. This complex is an E3 ubiquitin ligase that regulates progression through the metaphase to anaphase portion of the cell cycle by ubiquitinating proteins which targets them for degradation.

Specification

Aliases : APC1; MCPR; TSG24

Entrez GeneID : 64682

Swissprot : Q9H1A4

clone : 7G9B3

WB Predicted band size : 216kDa

Host/Isotype : Mouse IgG1

Storage : Store at 4°C short term. Aliquot and store at -20°C long term. Avoid freeze/thaw cycles.

Species Reactivity : Human

Immunogen : Purified recombinant fragment of human ANAPC1 (AA: 12-155) expressed in E. Coli.

Formulation : Purified antibody in PBS with 0.05% sodium azide

Application

| | |
|-------|---------------|
| ICC | 1/100 - 1/500 |
| FCM | 1/200 - 1/400 |
| ELISA | 1/10000 |

References

1. Drug Alcohol Depend. 2012 Aug 1;124(3):325-32.
2. Braz J Med Biol Res. 2008 Jun;41(6):539-43.

Call 1-510-860-4615
+86-19375157864
Email Info@ProMab.com
Web www.ProMab.com
www.ProMab.cn

Protocol

WB - www.promab.com/protocol/wb.html
IHC - www.promab.com/protocol/ihc.html
ICC - www.promab.com/protocol/icc.html
HCM - www.promab.com/protocol/hcm.html

Antigen Sequence is available upon request.

Products and Services

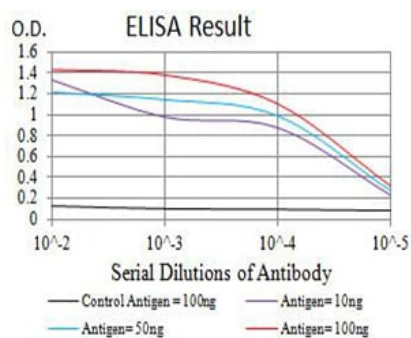
- Mouse Monoclonal Antibody
- Rat Monoclonal Antibody
- Human Antibody
- Hybridoma Sequencing
- Polyclonal Antibody

For Research Only

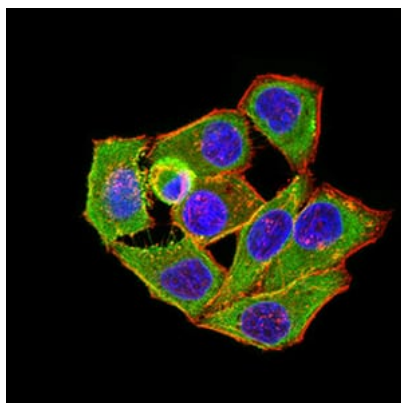
Application Key: WB - Western Blot | IHC - Immunohistochemistry | ICC - Immunocytochemistry | FCM - Flow Cytometry | ELISA - Enzyme-linked Immunosorbent Assay | IP - Immunoprecipitation

#31280

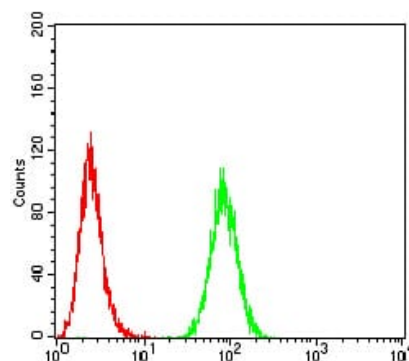
Mouse Monoclonal Antibody to ANAPC1



Black line: Control Antigen (100 ng); Purple line: Antigen (10ng); Blue line: Antigen (50 ng); Red line: Antigen (100 ng)



Immunofluorescence analysis of HeLa cells using ANAPC1 mouse mAb (green). Blue: DRAQ5 fluorescent DNA dye. Red: Actin filaments have been labeled with Alexa Fluor-555 phalloidin. Secondary antibody from Fisher (Cat#: 35503)



Flow cytometric analysis of HeLa cells using ANAPC1 mouse mAb (green) and negative control (red).

For Research Only

Application Key: WB - Western Blot | IHC - Immunohistochemistry | ICC - Immunocytochemistry | FCM - Flow Cytometry | ELISA - Enzyme-linked Immunosorbent Assay | IP - Immunoprecipitation

#31280