

Mouse Monoclonal Antibody to GLRA1

Order Information

Catalog#	31281	
Size/Concentration	100µl	50µl
Price(¥)	2180	1280

Description

The protein encoded by this gene is a subunit of a pentameric inhibitory glycine receptor, which mediates postsynaptic inhibition in the central nervous system. Defects in this gene are a cause of startle disease (STHE), also known as hereditary hyperekplexia or congenital stiff-person syndrome. Multiple transcript variants encoding different isoforms have been found.

Specification

Aliases : STHE; HKPX1

Entrez GeneID : 2741

Swissprot : P23415

clone : 7F8E2

WB Predicted band size : 52.6kDa

Host/Isotype : Mouse IgG1

Storage : Store at 4°C short term. Aliquot and store at -20°C long term. Avoid freeze/thaw cycles.

Species Reactivity : Human

Immunogen : Purified recombinant fragment of human GLRA1 (AA: extra 29-154) expressed in E. Coli.

Formulation : Purified antibody in PBS with 0.05% sodium azide

Application

ELISA 1/10000

References

1. Alcohol Clin Exp Res. 2015 Jun;39(6):962-8.
2. J Biol Chem. 2012 Nov 23;287(48):40713-21.






Call 1-510-860-4615
+86-19375157864
Email Info@ProMab.com
Web www.ProMab.com
www.ProMab.cn

Protocol

WB - www.promab.com/protocol/wb.html
IHC - www.promab.com/protocol/ihc.html
ICC - www.promab.com/protocol/icc.html
HCM - www.promab.com/protocol/hcm.html

Antigen Sequence is available upon request.

Products and Services

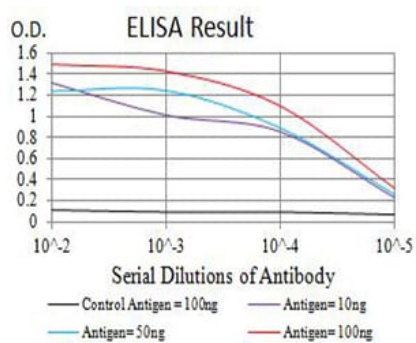
-  Mouse Monoclonal Antibody
-  Rat Monoclonal Antibody
-  Human Antibody
-  Hybridoma Sequencing
-  Polyclonal Antibody

For Research Only

Application Key:WB - Western Blot | IHC - Immunohistochemistry | ICC - Immunocytochemistry | FCM - Flow Cytometry | ELISA - Enzyme-linked Immunosorbent Assay | IP - Immunoprecipitation

#31281

Mouse Monoclonal Antibody to GLRA1



Black line: Control Antigen (100 ng); Purple line: Antigen (10ng); Blue line: Antigen (50 ng); Red line:Antigen (100 ng)

For Research Only

Application Key: WB - Western Blot | IHC - Immunohistochemistry | ICC - Immunocytochemistry | FCM - Flow Cytometry | ELISA - Enzyme-linked Immunosorbent Assay | IP - Immunoprecipitation

#31281