

Mouse Monoclonal Antibody to ALDOA

Order Information

Catalog#	31287	
Size/Concentration	100µl	50µl
Price(¥)	2180	1280

Description

The protein encoded by this gene, Aldolase A (fructose-bisphosphate aldolase), is a glycolytic enzyme that catalyzes the reversible conversion of fructose-1,6-bisphosphate to glyceraldehyde 3-phosphate and dihydroxyacetone phosphate. Three aldolase isozymes (A, B, and C), encoded by three different genes, are differentially expressed during development. Aldolase A is found in the developing embryo and is produced in even greater amounts in adult muscle. Aldolase A expression is repressed in adult liver, kidney and intestine and similar to aldolase C levels in brain and other nervous tissue. Aldolase A deficiency has been associated with myopathy and hemolytic anemia. Alternative splicing and alternative promoter usage results in multiple transcript variants. Related pseudogenes have been identified on chromosomes 3 and 10.

Specification

Aliases : ALDA; GSD12; HEL-S-87p
Entrez GeneID : 226
Swissprot : P04075
clone : 1C5B2
WB Predicted band size : 39.4kDa
Host/Isotype : Mouse IgG2a
Storage : Store at 4°C short term. Aliquot and store at -20°C long term. Avoid freeze/thaw cycles.
Species Reactivity : Human, Mouse
Immunogen : Purified recombinant fragment of human ALDOA (AA: 9-145) expressed in E. Coli.
Formulation : Purified antibody in PBS with 0.05% sodium azide

Application

WB	1/500 - 1/2000
IHC	1/200 - 1/1000
FCM	1/200 - 1/400
ELISA	1/10000

References

1. Cancer Lett. 2016 Apr 28;374(1):127-35.
2. Oncol Rep. 2014 Nov;32(5):2031-7.

Call 1-510-860-4615
+86-19375157864
Email Info@ProMab.com
Web www.ProMab.com
www.ProMab.cn

Protocol

WB - www.promab.com/protocol/wb.html
IHC - www.promab.com/protocol/ihc.html
ICC - www.promab.com/protocol/icc.html
HCM - www.promab.com/protocol/hcm.html
Antigen Sequence is available upon request.

Products and Services

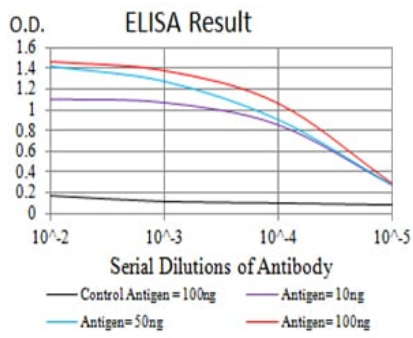
- Mouse Monoclonal Antibody
- Rat Monoclonal Antibody
- Human Antibody
- Hybridoma Sequencing
- Polyclonal Antibody

For Research Only

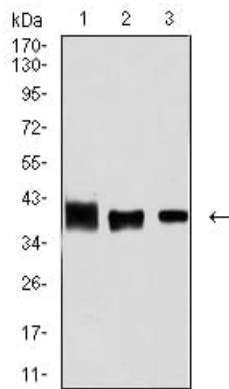
Application Key: WB - Western Blot | IHC - Immunohistochemistry | ICC - Immunocytochemistry | FCM - Flow Cytometry | ELISA - Enzyme-linked Immunosorbent Assay | IP - Immunoprecipitation

#31287

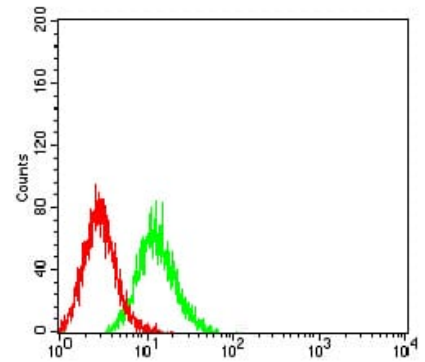
Mouse Monoclonal Antibody to ALDOA



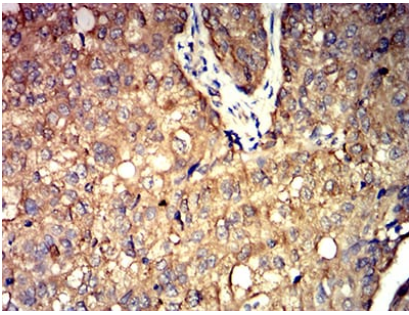
Black line: Control Antigen (100 ng); Purple line: Antigen (10ng); Blue line: Antigen (50 ng); Red line: Antigen (100 ng)



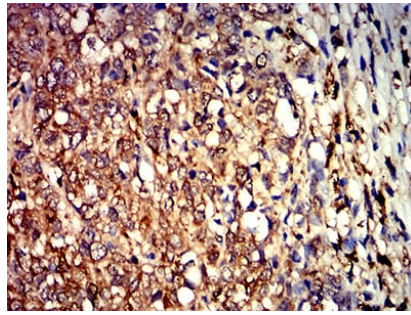
Western blot analysis using ALDOA mouse mAb against MCF-7 (1), HeLa (2), and NIH/3T3 (3) cell lysate.



Flow cytometric analysis of K562 cells using ALDOA mouse mAb (green) and negative control (red).



Immunohistochemical analysis of paraffin-embedded human bladder cancer tissues using ALDOA mouse mAb with DAB staining.



Immunohistochemical analysis of paraffin-embedded human breast cancer tissues using ALDOA mouse mAb with DAB staining.

For Research Only

Application Key: WB - Western Blot | IHC - Immunohistochemistry | ICC - Immunocytochemistry | FCM - Flow Cytometry | ELISA - Enzyme-linked Immunosorbent Assay | IP - Immunoprecipitation

#31287