

Mouse Monoclonal Antibody to CHRNA10

Order Information

Catalog#	31291	
Size/Concentration	100µl	50µl
Price(¥)	2180	1280

Description

CHRNA10 (Cholinergic Receptor Nicotinic Alpha 10 Subunit) is a Protein Coding gene. Among its related pathways are Peptide ligand-binding receptors and CREB Pathway. GO annotations related to this gene include receptor binding and extracellular ligand-gated ion channel activity. An important paralog of this gene is CHRNA9.

Specification

Entrez GeneID : 57053

Swissprot : Q9GZZ6

clone : 4E2D1

WB Predicted band size : 49.7kDa

Host/Isotype : Mouse IgG2a

Storage : Store at 4°C short term. Aliquot and store at -20°C long term. Avoid freeze/thaw cycles.

Species Reactivity : Human

Immunogen : Purified recombinant fragment of human CHRNA10 (AA: extra 25-237) expressed in E. Coli.

Formulation : Purified antibody in PBS with 0.05% sodium azide

Application

FCM	1/200 - 1/400
ELISA	1/10000

References

1. J Neurochem. 2012 Sep;122(6):1137-44.
2. Genes Brain Behav. 2010 Oct;9(7):741-50.






Call 1-510-860-4615
+86-19375157864
Email Info@ProMab.com
Web www.ProMab.com
www.ProMab.cn

Protocol

WB - www.promab.com/protocol/wb.html
IHC - www.promab.com/protocol/ihc.html
ICC - www.promab.com/protocol/icc.html
HCM - www.promab.com/protocol/hcm.html

Antigen Sequence is available upon request.

Products and Services

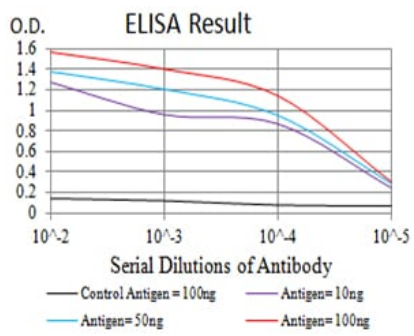
-  Mouse Monoclonal Antibody
-  Rat Monoclonal Antibody
-  Human Antibody
-  Hybridoma Sequencing
-  Polyclonal Antibody

For Research Only

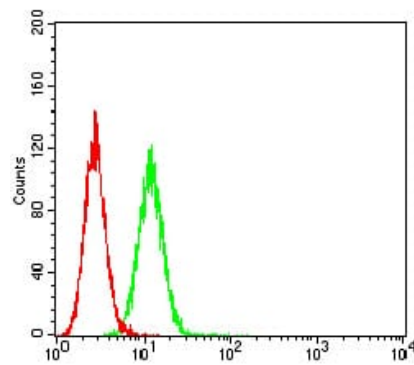
Application Key: WB - Western Blot | IHC - Immunohistochemistry | ICC - Immunocytochemistry | FCM - Flow Cytometry | ELISA - Enzyme-linked Immunosorbent Assay | IP - Immunoprecipitation

#31291

Mouse Monoclonal Antibody to CHRNA10



Black line: Control Antigen (100 ng); Purple line: Antigen (10ng); Blue line: Antigen (50 ng); Red line: Antigen (100 ng)



Flow cytometric analysis of HeLa cells using CHRNA10 mouse mAb (green) and negative control (red).

For Research Only

Application Key: WB - Western Blot | IHC - Immunohistochemistry | ICC - Immunocytochemistry | FCM - Flow Cytometry | ELISA - Enzyme-linked Immunosorbent Assay | IP - Immunoprecipitation

#31291