

Mouse Monoclonal Antibody to CD354

Order Information

Catalog#	31536	
Size/Concentration	100µl	50µl
Price(¥)	2180	1280

Description

This gene encodes a receptor belonging to the Ig superfamily that is expressed on myeloid cells. This protein amplifies neutrophil and monocyte-mediated inflammatory responses triggered by bacterial and fungal infections by stimulating release of pro-inflammatory chemokines and cytokines, as well as increased surface expression of cell activation markers. Alternatively spliced transcript variants encoding different isoforms have been noted for this gene.

Specification

Aliases : TREM1; TREM-1

Entrez GeneID : 54210

Swissprot : Q9NP99

clone : 5F9F7

WB Predicted band size : 26.4kDa

Host/Isotype : Mouse IgG2a

Storage : Store at 4°C short term. Aliquot and store at -20°C long term. Avoid freeze/thaw cycles.

Species Reactivity : Human

Immunogen : Purified recombinant fragment of human CD354 (AA: extra 21-205) expressed in E. Coli.

Formulation : Purified antibody in PBS with 0.05% sodium azide

Application

FCM	1/200 - 1/400
ELISA	1/10000

References

- 1.Mol Oral Microbiol. 2017 Aug;32(4):275-287.
- 2.Immunol Lett. 2016 Mar;171:50-9.

Call 1-510-860-4615
+86-19375157864
Email Info@ProMab.com
Web www.ProMab.com
www.ProMab.cn

Protocol

WB - www.promab.com/protocol/wb.html
IHC - www.promab.com/protocol/ihc.html
ICC - www.promab.com/protocol/icc.html
HCM - www.promab.com/protocol/hcm.html

Antigen Sequence is available upon request.

Products and Services

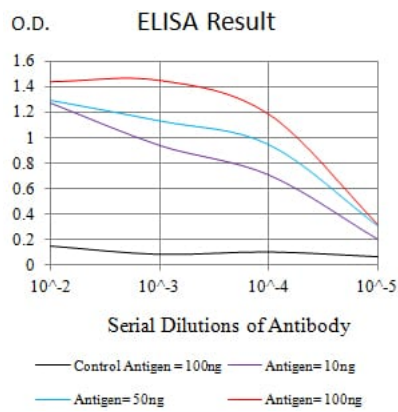
- Mouse Monoclonal Antibody
- Rat Monoclonal Antibody
- Human Antibody
- Hybridoma Sequencing
- Polyclonal Antibody

For Research Only

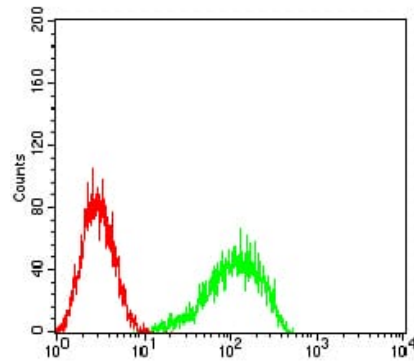
Application Key:WB - Western Blot | IHC - Immunohistochemistry | ICC - Immunocytochemistry | FCM - Flow Cytometry | ELISA - Enzyme-linked Immunosorbent Assay | IP - Immunoprecipitation

#31536

Mouse Monoclonal Antibody to CD354



Black line: Control Antigen (100 ng); Purple line: Antigen (10ng); Blue line: Antigen (50 ng); Red line: Antigen (100 ng)



Flow cytometric analysis of HL-60 cells using CD354 mouse mAb (green) and negative control (red).

For Research Only

Application Key: WB - Western Blot | IHC - Immunohistochemistry | ICC - Immunocytochemistry | FCM - Flow Cytometry | ELISA - Enzyme-linked Immunosorbent Assay | IP - Immunoprecipitation

#31536