

# Mouse Monoclonal Antibody to CD351

## Order Information

Catalog#	31538	
Size/Concentration	100µl	50µl
Price(¥)	2180	1280

## Description

FCAMR as a receptor for the Fc fragment of IgA and IgM. Binds IgA and IgM with high affinity and mediates their endocytosis. May function in the immune response to microbes mediated by IgA and IgM.

## Specification

Aliases : FCAMR; FCA/MR; FKSG87

Entrez GeneID : 83953

Swissprot : Q8WWV6

clone : 5B1D12E1

WB Predicted band size : 57.1kDa

Host/Isotype : Mouse IgG1

Storage : Store at 4°C short term. Aliquot and store at -20°C long term. Avoid freeze/thaw cycles.

Species Reactivity : Human

Immunogen : Purified recombinant fragment of human CD351 (AA: extra 221-450) expressed in E. Coli.

Formulation : Purified antibody in PBS with 0.05% sodium azide

## Application

FCM	1/200 - 1/400
ELISA	1/10000

## References






1. Cell Immunol. 2009;258(1):78-82.
2. Biochem Biophys Res Commun. 2002 Jan 11;290(1):438-42.

Call 1-510-860-4615  
+86-19375157864  
Email [Info@ProMab.com](mailto:Info@ProMab.com)  
Web [www.ProMab.com](http://www.ProMab.com)  
[www.ProMab.cn](http://www.ProMab.cn)

## Protocol

WB - [www.promab.com/protocol/wb.html](http://www.promab.com/protocol/wb.html)  
IHC - [www.promab.com/protocol/ihc.html](http://www.promab.com/protocol/ihc.html)  
ICC - [www.promab.com/protocol/icc.html](http://www.promab.com/protocol/icc.html)  
HCM - [www.promab.com/protocol/hcm.html](http://www.promab.com/protocol/hcm.html)  
**Antigen Sequence** is available upon request.

## Products and Services

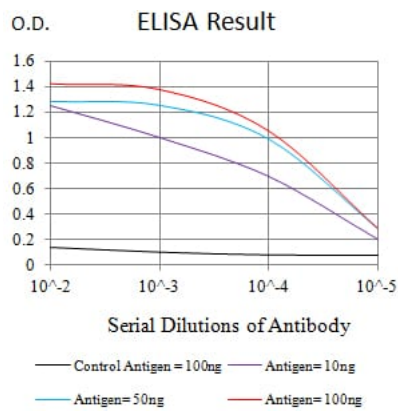
-  Mouse Monoclonal Antibody
-  Rat Monoclonal Antibody
-  Human Antibody
-  Hybridoma Sequencing
-  Polyclonal Antibody

**For Research Only**

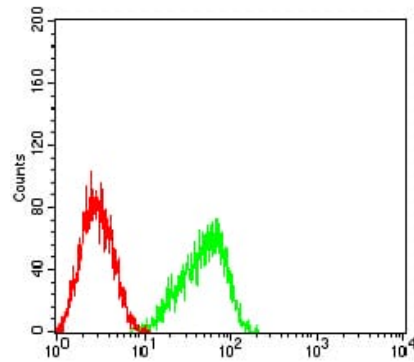
**Application Key:** WB - Western Blot | IHC - Immunohistochemistry | ICC - Immunocytochemistry | FCM - Flow Cytometry | ELISA - Enzyme-linked Immunosorbent Assay | IP - Immunoprecipitation

# #31538

# Mouse Monoclonal Antibody to CD351



Black line: Control Antigen (100 ng);Purple line: Antigen (10ng); Blue line: Antigen (50 ng); Red line:Antigen (100 ng)



Flow cytometric analysis of HL-60 cells using CD351 mouse mAb (green) and negative control (red).

For Research Only

Application Key:WB - Western Blot | IHC - Immunohistochemistry | ICC - Immunocytochemistry | FCM - Flow Cytometry | ELISA - Enzyme-linked Immunosorbent Assay | IP - Immunoprecipitation

#31538