

Mouse Monoclonal Antibody to CLL1

Order Information

Catalog#	31540	
Size/Concentration	100µl	50µl
Price(¥)	2180	1280

Description

This gene encodes a member of the C-type lectin/C-type lectin-like domain (CTL/CTLD) superfamily. Members of this family share a common protein fold and have diverse functions, such as cell adhesion, cell-cell signaling, glycoprotein turnover, and roles in inflammation and immune response. The protein encoded by this gene is a negative regulator of granulocyte and monocyte function. Several alternatively spliced transcript variants of this gene have been described, but the full-length nature of some of these variants has not been determined. This gene is closely linked to other CTL/CTLD superfamily members in the natural killer gene complex region on chromosome 12p13.

Specification

Aliases	: CLEC12A; MICL; CD371; CLL-1; DCAL-2
Entrez GeneID	: 160364
Swissprot	: Q5QGZ9
clone	: 4D5A8
WB Predicted band size	: 30.8kDa
Host/Isotype	: Mouse IgG2a
Storage	: Store at 4°C short term. Aliquot and store at -20°C long term. Avoid freeze/thaw cycles.
Species Reactivity	: Human
Immunogen	: Purified recombinant fragment of human CLL1 (AA: extra 65-265) expressed in E. Coli.
Formulation	: Purified antibody in PBS with 0.05% sodium azide

Application

WB	1/500 - 1/2000
ICC	1/200 - 1/500
FCM	1/200 - 1/400
ELISA	1/10000

References

1. J Immunol. 2016 Oct 1;197(7):2715-25.
2. Eur J Immunol. 2006 Aug;36(8):2159-69.

Call 1-510-860-4615
+86-19375157864
Email Info@ProMab.com
Web www.ProMab.com
www.ProMab.cn

Protocol

WB - www.promab.com/protocol/wb.html
IHC - www.promab.com/protocol/ihc.html
ICC - www.promab.com/protocol/icc.html
HCM - www.promab.com/protocol/hcm.html
Antigen Sequence is available upon request.

Products and Services

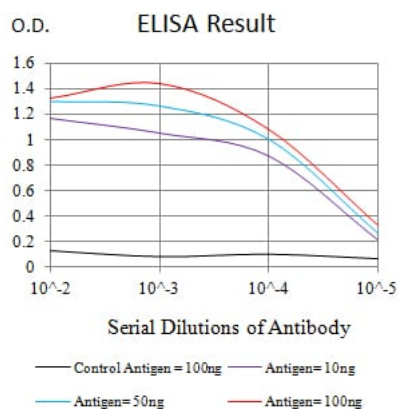
- Mouse Monoclonal Antibody
- Rat Monoclonal Antibody
- Human Antibody
- Hybridoma Sequencing
- Polyclonal Antibody

For Research Only

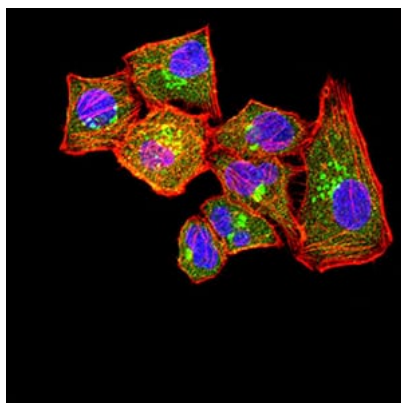
Application Key: WB - Western Blot | IHC - Immunohistochemistry | ICC - Immunocytochemistry | FCM - Flow Cytometry | ELISA - Enzyme-linked Immunosorbent Assay | IP - Immunoprecipitation

#31540

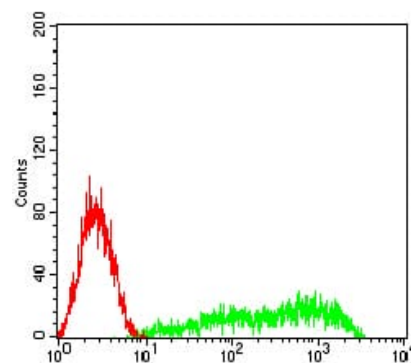
Mouse Monoclonal Antibody to CLL1



Black line: Control Antigen (100 ng); Purple line: Antigen (10ng); Blue line: Antigen (50 ng); Red line: Antigen (100 ng)



Immunofluorescence analysis of HeLa cells using CLL1 mouse mAb (green). Blue: DRAQ5 fluorescent DNA dye. Red: Actin filaments have been labeled with Alexa Fluor- 555 phalloidin. Secondary antibody from Fisher (Cat#: 35503)



Flow cytometric analysis of HL-60 cells using CLL1 mouse mAb (green) and negative control (red).

For Research Only

Application Key: WB - Western Blot | IHC - Immunohistochemistry | ICC - Immunocytochemistry | FCM - Flow Cytometry | ELISA - Enzyme-linked Immunosorbent Assay | IP - Immunoprecipitation

#31540