

Mouse Monoclonal Antibody to CD148

Order Information

Catalog#	31543	
Size/Concentration	100µl	50µl
Price(¥)	2180	1280

Description

The protein encoded by this gene is a member of the protein tyrosine phosphatase (PTP) family. PTPs are known to be signaling molecules that regulate a variety of cellular processes, including cell growth, differentiation, mitotic cycle, and oncogenic transformation. This PTP possesses an extracellular region containing five fibronectin type III repeats, a single transmembrane region, and a single intracytoplasmic catalytic domain, and thus represents a receptor-type PTP. This protein is present in all hematopoietic lineages, and was shown to negatively regulate T cell receptor signaling possibly through interfering with the phosphorylation of Phospholipase C Gamma 1 and Linker for Activation of T Cells. This protein can also dephosphorylate the PDGF beta receptor, and may be involved in UV-induced signal transduction. Multiple transcript variants encoding different isoforms have been found for this gene.

Specification

Aliases	: PTPRJ; DEP1; SCC1; HPTPeta; R-PTP-ETA
Entrez GeneID	: 5795
Swissprot	: Q12913
clone	: 1D2C11
WB Predicted band size	: 146kDa
Host/Isotype	: Mouse IgG2b
Storage	: Store at 4°C short term. Aliquot and store at -20°C long term. Avoid freeze/thaw cycles.
Species Reactivity	: Human
Immunogen	: Purified recombinant fragment of human CD148 (AA: extra 36-210) expressed in E. Coli.
Formulation	: Purified antibody in PBS with 0.05% sodium azide

Application

FCM	1/200 - 1/400
ELISA	1/10000

References

1. Oncogene. 2015 Oct 29;34(44):5536-47.
2. J Neurooncol. 2015 May;122(3):451-9.

Call 1-510-860-4615
+86-19375157864
Email Info@ProMab.com
Web www.ProMab.com
www.ProMab.cn

Protocol

WB - www.promab.com/protocol/wb.html
IHC - www.promab.com/protocol/ihc.html
ICC - www.promab.com/protocol/icc.html
HCM - www.promab.com/protocol/hcm.html
Antigen Sequence is available upon request.

Products and Services

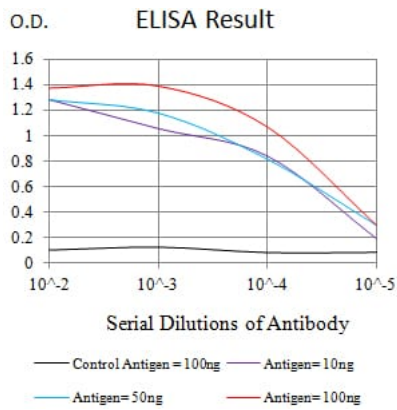
- Mouse Monoclonal Antibody
- Rat Monoclonal Antibody
- Human Antibody
- Hybridoma Sequencing
- Polyclonal Antibody

For Research Only

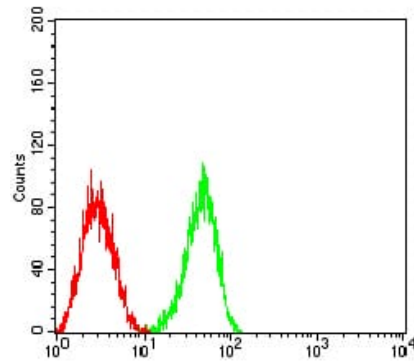
Application Key: WB - Western Blot | IHC - Immunohistochemistry | ICC - Immunocytochemistry | FCM - Flow Cytometry | ELISA - Enzyme-linked Immunosorbent Assay | IP - Immunoprecipitation

#31543

Mouse Monoclonal Antibody to CD148



Black line: Control Antigen (100 ng); Purple line: Antigen (10ng); Blue line: Antigen (50 ng); Red line: Antigen (100 ng)



Flow cytometric analysis of HL-60 cells using CD148 mouse mAb (green) and negative control (red).

For Research Only

Application Key: WB - Western Blot | IHC - Immunohistochemistry | ICC - Immunocytochemistry | FCM - Flow Cytometry | ELISA - Enzyme-linked Immunosorbent Assay | IP - Immunoprecipitation

#31543