

# Mouse Monoclonal Antibody to IL10RB

## Order Information

Catalog#	31549	
Size/Concentration	100µl	50µl
Price(¥)	2180	1280

## Description

The protein encoded by this gene belongs to the cytokine receptor family. It is an accessory chain essential for the active interleukin 10 receptor complex. Coexpression of this and IL10RA proteins has been shown to be required for IL10-induced signal transduction. This gene and three other interferon receptor genes, IFAR2, IFNAR1, and IFNGR2, form a class II cytokine receptor gene cluster located in a small region on chromosome 21.

## Specification

Aliases	: CRFB4; CRF2-4; D21S58; D21S66; CDW210B; IL-10R2
Entrez GeneID	: 3588
Swissprot	: Q08334
clone	: 5B3F2
WB Predicted band size	: 37kDa
Host/Isotype	: Mouse IgG1
Storage	: Store at 4°C short term. Aliquot and store at -20°C long term. Avoid freeze/thaw cycles.
Species Reactivity	: Human,Rat
Immunogen	: Purified recombinant fragment of human IL10RB (AA: extra 20-220) expressed in E. Coli.
Formulation	: Purified antibody in PBS with 0.05% sodium azide

## Application

WB	1/500 - 1/2000
FCM	1/200 - 1/400
ELISA	1/10000

## References

- 1.Cancer Immunol Res. 2015 Nov;3(11):1227-35.
- 2.Biochem Biophys Res Commun. 2008 Aug 29;373(3):403-7.

Call 1-510-860-4615  
+86-19375157864  
Email [Info@ProMab.com](mailto:Info@ProMab.com)  
Web [www.ProMab.com](http://www.ProMab.com)  
[www.ProMab.cn](http://www.ProMab.cn)

## Protocol

WB - [www.promab.com/protocol/wb.html](http://www.promab.com/protocol/wb.html)  
IHC - [www.promab.com/protocol/ihc.html](http://www.promab.com/protocol/ihc.html)  
ICC - [www.promab.com/protocol/icc.html](http://www.promab.com/protocol/icc.html)  
HCM - [www.promab.com/protocol/hcm.html](http://www.promab.com/protocol/hcm.html)  
**Antigen Sequence** is available upon request.

## Products and Services

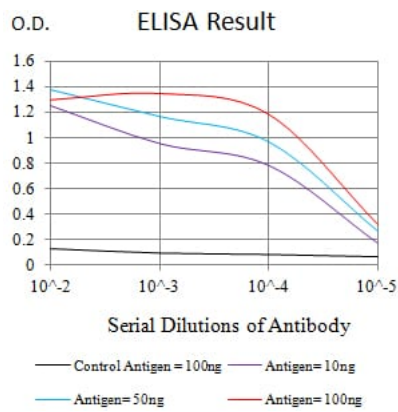
- Mouse Monoclonal Antibody
- Rat Monoclonal Antibody
- Human Antibody
- Hybridoma Sequencing
- Polyclonal Antibody

**For Research Only**

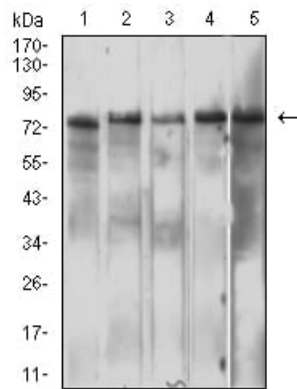
**Application Key:**WB - Western Blot | IHC - Immunohistochemistry | ICC - Immunocytochemistry | FCM - Flow Cytometry | ELISA - Enzyme-linked Immunosorbent Assay | IP - Immunoprecipitation

# #31549

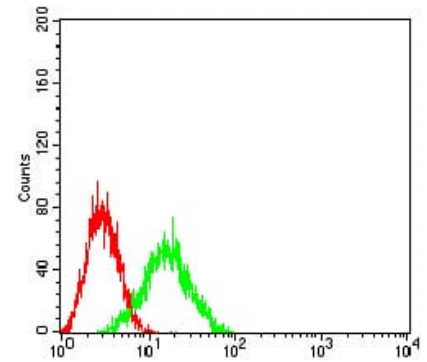
# Mouse Monoclonal Antibody to IL10RB



Black line: Control Antigen (100 ng); Purple line: Antigen (10ng); Blue line: Antigen (50 ng); Red line: Antigen (100 ng)



Western blot analysis using IL10RB mouse mAb against HeLa (1), Jurkat (2), Ramos (3), Raji (4), and C6 (5) cell lysate.



Flow cytometric analysis of HL-60 cells using IL10RB mouse mAb (green) and negative control (red).

**For Research Only**

**Application Key:** WB - Western Blot | IHC - Immunohistochemistry | ICC - Immunocytochemistry | FCM - Flow Cytometry | ELISA - Enzyme-linked Immunosorbent Assay | IP - Immunoprecipitation

**#31549**