

Mouse Monoclonal Antibody to CD339

Order Information

Catalog#	31550	
Size/Concentration	100µl	50µl
Price(¥)	2180	1280

Description

The jagged 1 protein encoded by JAG1 is the human homolog of the Drosophila jagged protein. Human jagged 1 is the ligand for the receptor notch 1, the latter a human homolog of the Drosophila jagged receptor notch. Mutations that alter the jagged 1 protein cause Alagille syndrome. Jagged 1 signalling through notch 1 has also been shown to play a role in hematopoiesis.

Specification

Aliases	: JAG1; AGS; AHD; AWS; HJ1; AGS1; JAGL1
Entrez GeneID	: 182
Swissprot	: P78504
clone	: 7C7E1
WB Predicted band size	: 133.8kDa
Host/Isotype	: Mouse IgG1
Storage	: Store at 4°C short term. Aliquot and store at -20°C long term. Avoid freeze/thaw cycles.
Species Reactivity	: Human
Immunogen	: Purified recombinant fragment of human CD339 (AA: extra 47-212) expressed in E. Coli.
Formulation	: Purified antibody in PBS with 0.05% sodium azide

Application

WB	1/500 - 1/2000
FCM	1/200 - 1/400
ELISA	1/10000

References

- 1.Cancer Sci. 2016 Nov;107(11):1705-1716.
- 2.Gene. 2016 Jan 15;576(1 Pt 3):381-4.

Call 1-510-860-4615
+86-19375157864
Email Info@ProMab.com
Web www.ProMab.com
www.ProMab.cn

Protocol

WB - www.promab.com/protocol/wb.html
IHC - www.promab.com/protocol/ihc.html
ICC - www.promab.com/protocol/icc.html
HCM - www.promab.com/protocol/hcm.html
Antigen Sequence is available upon request.

Products and Services

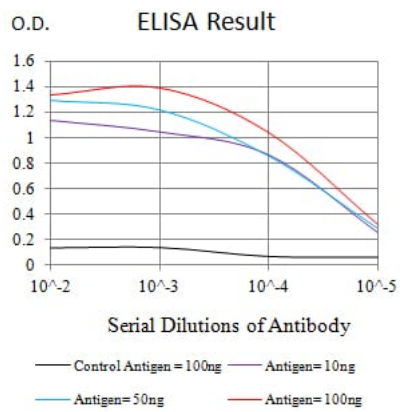
- Mouse Monoclonal Antibody
- Rat Monoclonal Antibody
- Human Antibody
- Hybridoma Sequencing
- Polyclonal Antibody

For Research Only

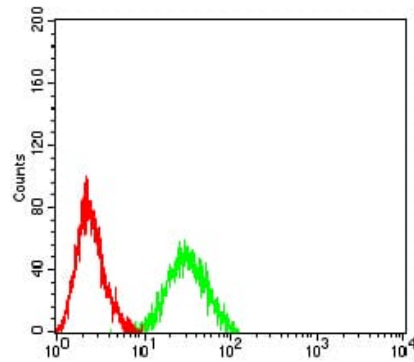
Application Key:WB - Western Blot | IHC - Immunohistochemistry | ICC - Immunocytochemistry | FCM - Flow Cytometry | ELISA - Enzyme-linked Immunosorbent Assay | IP - Immunoprecipitation

#31550

Mouse Monoclonal Antibody to CD339



Black line: Control Antigen (100 ng);Purple line: Antigen (10ng); Blue line: Antigen (50 ng); Red line:Antigen (100 ng)



Flow cytometric analysis of HL-60 cells using CD339 mouse mAb (green) and negative control (red).

For Research Only

Application Key:WB - Western Blot | IHC - Immunohistochemistry | ICC - Immunocytochemistry | FCM - Flow Cytometry | ELISA - Enzyme-linked Immunosorbent Assay | IP - Immunoprecipitation

#31550