

# Mouse Monoclonal Antibody to MCM3

## Order Information

Catalog#	32392	
Size/Concentration	100µl	50µl
Price(¥)	2180	1280

## Description

The protein encoded by this gene is one of the highly conserved mini-chromosome maintenance proteins (MCM) that are involved in the initiation of eukaryotic genome replication. The hexameric protein complex formed by MCM proteins is a key component of the pre-replication complex (pre\_RC) and may be involved in the formation of replication forks and in the recruitment of other DNA replication related proteins. This protein is a subunit of the protein complex that consists of MCM2-7. It has been shown to interact directly with MCM5/CDC46. This protein also interacts with and is acetylated by MCM3AP, a chromatin-associated acetyltransferase. The acetylation of this protein inhibits the initiation of DNA replication and cell cycle progression. Several transcript variants encoding different isoforms have been found for this gene.

## Specification

Aliases : HCC5; P1.h; RLFb; P1-MCM3

Entrez GeneID : 4172

Swissprot : P25205

clone : 1D4A3

WB Predicted band size : 91kDa

Host/Isotype : Mouse IgG1

Antibody Type : Primary antibody

Storage : Store at 4°C short term. Aliquot and store at -20°C long term. Avoid freeze/thaw cycles.

Species Reactivity : Human,Rat,Monkey

Immunogen : Purified recombinant fragment of human MCM3 expressed in E. Coli.

Formulation : Purified antibody in PBS with 0.05% sodium azide

## Application

WB	1/500 - 1/2000
IHC	1/200 - 1/1000
ICC	1/50 - 1/200
FCM	1/200 - 1/400

## References

- 1.Comput Math Methods Med. 2021 Oct 11;2021:8494260.
- 2.Biosci Rep. 2020 Jul 31;40(7):BSR20201503.

Call 1-510-860-4615  
+86-19375157864  
Email [Info@ProMab.com](mailto:Info@ProMab.com)  
Web [www.ProMab.com](http://www.ProMab.com)  
[www.ProMab.cn](http://www.ProMab.cn)

## Protocol

WB - [www.promab.com/protocol/wb.html](http://www.promab.com/protocol/wb.html)  
IHC - [www.promab.com/protocol/ihc.html](http://www.promab.com/protocol/ihc.html)  
ICC - [www.promab.com/protocol/icc.html](http://www.promab.com/protocol/icc.html)  
HCM - [www.promab.com/protocol/hcm.html](http://www.promab.com/protocol/hcm.html)

**Antigen Sequence** is available upon request.

## Products and Services

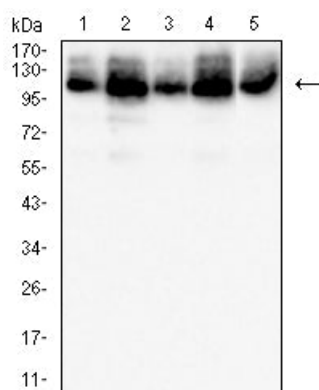
- Mouse Monoclonal Antibody
- Rat Monoclonal Antibody
- Human Antibody
- Hybridoma Sequencing
- Polyclonal Antibody

**For Research Only**

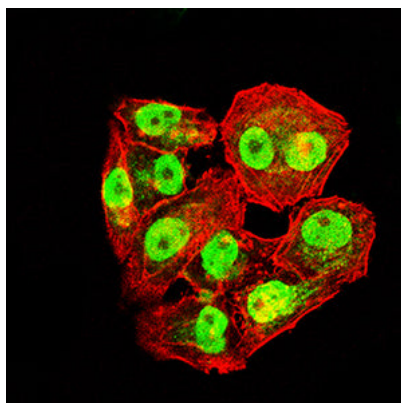
**Application Key:**WB - Western Blot | IHC - Immunohistochemistry | ICC - Immunocytochemistry | FCM - Flow Cytometry | ELISA - Enzyme-linked Immunosorbent Assay | IP - Immunoprecipitation

# #32392

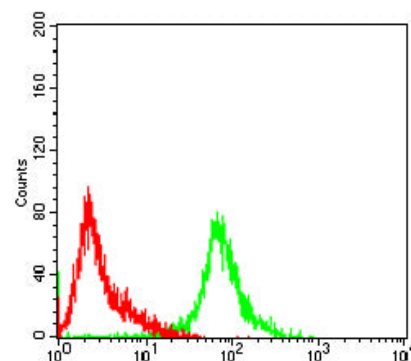
# Mouse Monoclonal Antibody to MCM3



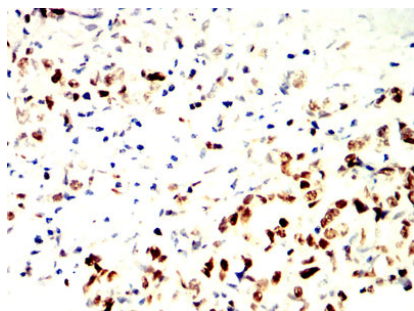
Western blot analysis using MCM3 mouse mAb against PC-12 (1), HepG2 (2), HeLa (3) and COS7 (4) cell lysate.



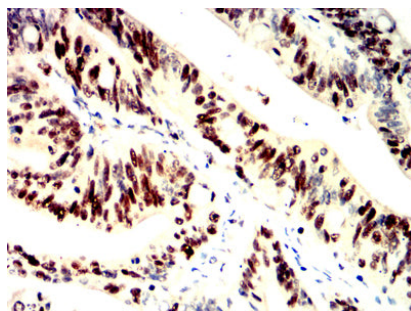
Immunofluorescence analysis of HeLa cells using MCM3 mouse mAb (green). Blue: DRAQ5 fluorescent DNA dye. Red: Actin filaments have been labeled with Alexa Fluor-555 phalloidin. Secondary antibody from Fisher (Cat#: 35503)



Flow cytometric analysis of HeLa cells using MCM3 mouse mAb (green) and negative control (red).



Immunohistochemical analysis of paraffin-embedded human stomach cancer tissues using MCM3 mouse mAb with DAB staining.



Immunohistochemical analysis of paraffin-embedded human rectum cancer tissues using MCM3 mouse mAb with DAB staining.

**For Research Only**

**Application Key:** WB - Western Blot | IHC - Immunohistochemistry | ICC - Immunocytochemistry | FCM - Flow Cytometry | ELISA - Enzyme-linked Immunosorbent Assay | IP - Immunoprecipitation

#32392