

Mouse Monoclonal Antibody to PLIN3

Order Information

Catalog#	32396	
Size/Concentration	100µl	50µl
Price(¥)	2180	1280

Description

Mannose 6-phosphate receptors (MPRs) deliver lysosomal hydrolase from the Golgi to endosomes and then return to the Golgi complex. The protein encoded by this gene interacts with the cytoplasmic domains of both cation-independent and cation-dependent MPRs, and is required for endosome-to-Golgi transport. This protein also binds directly to the GTPase RAB9 (RAB9A), a member of the RAS oncogene family. The interaction with RAB9 has been shown to increase the affinity of this protein for its cargo. Multiple transcript variants encoding different isoforms have been found for this gene.

Specification

Aliases	: PP17; TIP47; M6PRBP1
Entrez GeneID	: 10226
Swissprot	: O60664
clone	: 6C9D9
WB Predicted band size	: 47kDa
Host/Isotype	: Mouse IgG2a
Storage	: Store at 4°C short term. Aliquot and store at -20°C long term. Avoid freeze/thaw cycles.
Species Reactivity	: Human
Immunogen	: Purified recombinant fragment of human PLIN3 expressed in E. Coli.
Formulation	: Purified antibody in PBS with 0.05% sodium azide

Application

WB	1/500 - 1/2000
ICC	1/100 - 1/500
FCM	1/200 - 1/400

References

1. Med Oncol. 2021 Aug 19;38(10):116.
2. Urol Oncol. 2018 Jul;36(7):343.e9-343.e19.

Call 1-510-860-4615
+86-19375157864
Email Info@ProMab.com
Web www.ProMab.com
www.ProMab.cn

Protocol

WB - www.promab.com/protocol/wb.html
IHC - www.promab.com/protocol/ihc.html
ICC - www.promab.com/protocol/icc.html
HCM - www.promab.com/protocol/hcm.html
Antigen Sequence is available upon request.

Products and Services

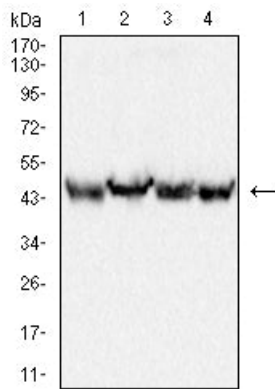
- Mouse Monoclonal Antibody
- Rat Monoclonal Antibody
- Human Antibody
- Hybridoma Sequencing
- Polyclonal Antibody

For Research Only

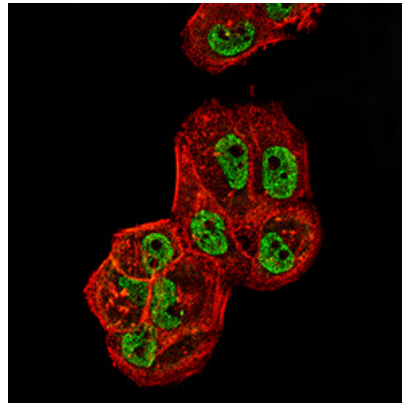
Application Key: WB - Western Blot | IHC - Immunohistochemistry | ICC - Immunocytochemistry | FCM - Flow Cytometry | ELISA - Enzyme-linked Immunosorbent Assay | IP - Immunoprecipitation

#32396

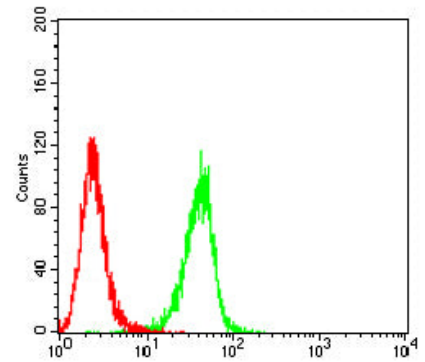
Mouse Monoclonal Antibody to PLIN3



Western blot analysis using PLIN3 mouse mAb against THP-1 (1), HepG2 (2), K562 (3) and HeLa (4) cell lysate.



Immunofluorescence analysis of HeLa cells using PLIN3 mouse mAb (green). Blue: DRAQ5 fluorescent DNA dye. Red: Actin filaments have been labeled with Alexa Fluor- 555 phalloidin. Secondary antibody from Fisher (Cat#: 35503)



Flow cytometric analysis of HeLa cells using PLIN3 mouse mAb (green) and negative control (red).

For Research Only

Application Key: WB - Western Blot | IHC - Immunohistochemistry | ICC - Immunocytochemistry | FCM - Flow Cytometry | ELISA - Enzyme-linked Immunosorbent Assay | IP - Immunoprecipitation

#32396