

# Mouse Monoclonal Antibody to JAM3

## Order Information

Catalog#	32400	
Size/Concentration	100µl	50µl
Price(¥)	2180	1280

## Description

Tight junctions represent one mode of cell-to-cell adhesion in epithelial or endothelial cell sheets, forming continuous seals around cells and serving as a physical barrier to prevent solutes and water from passing freely through the paracellular space. The protein encoded by this immunoglobulin superfamily gene member is localized in the tight junctions between high endothelial cells. Unlike other proteins in this family, the this protein is unable to adhere to leukocyte cell lines and only forms weak homotypic interactions. The encoded protein is a member of the junctional adhesion molecule protein family and acts as a receptor for another member of this family. A mutation in an intron of this gene is associated with hemorrhagic destruction of the brain, subependymal calcification, and congenital cataracts. Alternative splicing results in multiple transcript variants.

## Specification

Aliases : JAMC; JAM-2; JAM-3; JAM-C

Entrez GeneID : 83700

Swissprot : Q9BX67

clone : 2A5B6

WB Predicted band size : 35kDa

Host/Isotype : Mouse IgG1

Storage : Store at 4°C short term. Aliquot and store at -20°C long term. Avoid freeze/thaw cycles.

Species Reactivity : Human

Immunogen : Purified recombinant fragment of human JAM3 (AA: extra 32-241) expressed in E. Coli.

Formulation : Purified antibody in PBS with 0.05% sodium azide

## Application

WB	1/500 - 1/2000
FCM	1/200 - 1/400
ELISA	1/10000

## References

- 1.Int J Mol Med. 2018 Nov;42(5):2923-2929.
- 2.Cancer Res. 2017 Dec 1;77(23):6627-6640.

Call 1-510-860-4615

+86-19375157864

Email [Info@ProMab.com](mailto:Info@ProMab.com)

Web [www.ProMab.com](http://www.ProMab.com)

[www.ProMab.cn](http://www.ProMab.cn)

## Protocol

WB - [www.promab.com/protocol/wb.html](http://www.promab.com/protocol/wb.html)

IHC - [www.promab.com/protocol/ihc.html](http://www.promab.com/protocol/ihc.html)

ICC - [www.promab.com/protocol/icc.html](http://www.promab.com/protocol/icc.html)

HCM - [www.promab.com/protocol/hcm.html](http://www.promab.com/protocol/hcm.html)

**Antigen Sequence** is available upon request.

## Products and Services

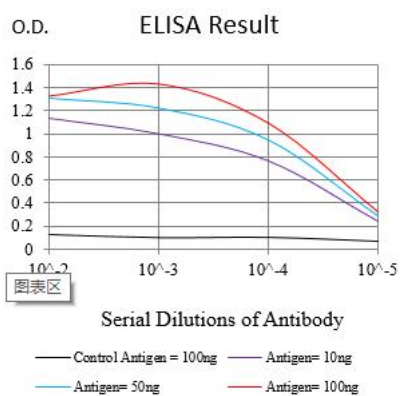
- Mouse Monoclonal Antibody
- Rat Monoclonal Antibody
- Human Antibody
- Hybridoma Sequencing
- Polyclonal Antibody

**For Research Only**

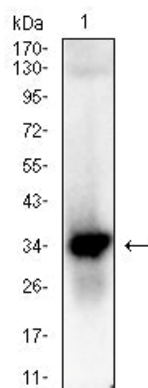
**Application Key:**WB - Western Blot | IHC - Immunohistochemistry | ICC - Immunocytochemistry | FCM - Flow Cytometry | ELISA - Enzyme-linked Immunosorbent Assay | IP - Immunoprecipitation

# #32400

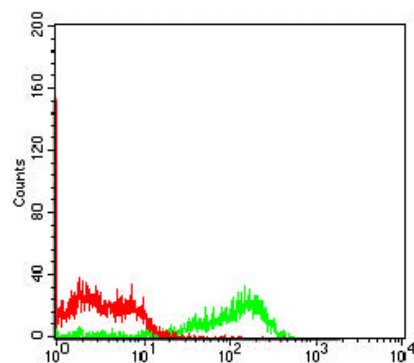
# Mouse Monoclonal Antibody to JAM3



Black line: Control Antigen (100 ng); Purple line: Antigen (10ng); Blue line: Antigen (50 ng); Red line: Antigen (100 ng)



Western blot analysis using JAM3 mouse mAb against SH-SY5Y (1) cell lysate.



Flow cytometric analysis of Hek293 cells using JAM3 mouse mAb (green) and negative control (red).

For Research Only

Application Key: WB - Western Blot | IHC - Immunohistochemistry | ICC - Immunocytochemistry | FCM - Flow Cytometry | ELISA - Enzyme-linked Immunosorbent Assay | IP - Immunoprecipitation

#32400