

Mouse Monoclonal Antibody to S100A4

Order Information

Catalog#	32405	
Size/Concentration	100µl	50µl
Price(¥)	2180	1280

Description

The protein encoded by this gene is a member of the S100 family of proteins containing 2 EF-hand calcium-binding motifs. S100 proteins are localized in the cytoplasm and/or nucleus of a wide range of cells, and involved in the regulation of a number of cellular processes such as cell cycle progression and differentiation. S100 genes include at least 13 members which are located as a cluster on chromosome 1q21. This protein may function in motility, invasion, and tubulin polymerization. Chromosomal rearrangements and altered expression of this gene have been implicated in tumor metastasis. Multiple alternatively spliced variants, encoding the same protein, have been identified.

Specification

Aliases : 42A; 18A2; CAPL; FSP1; MTS1; P9KA; PEL98

Entrez GeneID : 6275

Swissprot : P26447

clone : 4A5A7

WB Predicted band size : 11.7kDa

Host/Isotype : Mouse IgG1

Storage : Store at 4°C short term. Aliquot and store at -20°C long term. Avoid freeze/thaw cycles.

Species Reactivity : Human, Mouse, Rat

Immunogen : Purified recombinant fragment of human S100A4 (AA: 2-101) expressed in E. Coli.

Formulation : Purified antibody in PBS with 0.05% sodium azide

Application

IHC	1/200 - 1/1000
FCM	1/200 - 1/400
ELISA	1/10000

References

- 1.Int J Mol Sci. 2021 Apr 29;22(9):4720.
- 2.In Vivo. Jul-Aug 2021;35(4):2099-2106.

Call 1-510-860-4615
+86-19375157864
Email Info@ProMab.com
Web www.ProMab.com
www.ProMab.cn

Protocol

WB - www.promab.com/protocol/wb.html
IHC - www.promab.com/protocol/ihc.html
ICC - www.promab.com/protocol/icc.html
HCM - www.promab.com/protocol/hcm.html

Antigen Sequence is available upon request.

Products and Services

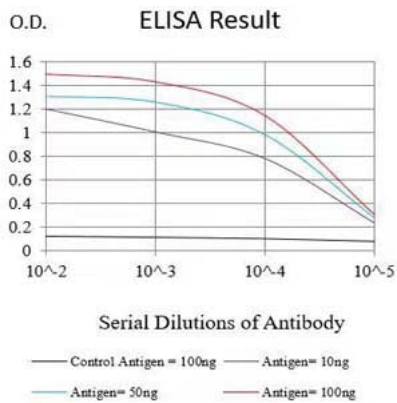
- Mouse Monoclonal Antibody
- Rat Monoclonal Antibody
- Human Antibody
- Hybridoma Sequencing
- Polyclonal Antibody

For Research Only

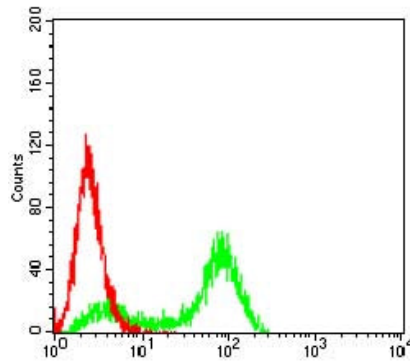
Application Key:WB - Western Blot | IHC - Immunohistochemistry | ICC - Immunocytochemistry | FCM - Flow Cytometry | ELISA - Enzyme-linked Immunosorbent Assay | IP - Immunoprecipitation

#32405

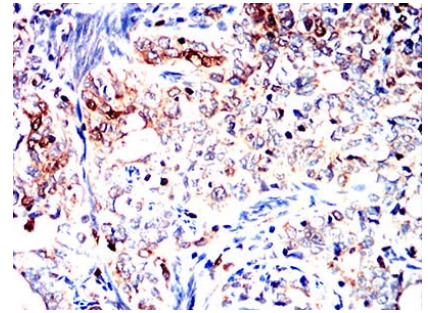
Mouse Monoclonal Antibody to S100A4



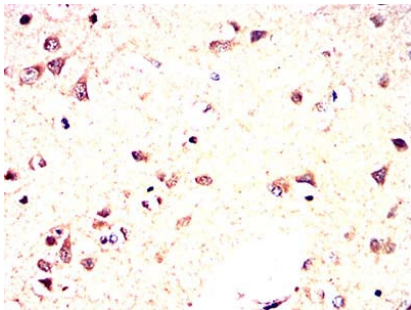
Black line: Control Antigen (100 ng);Purple line: Antigen (10ng); Blue line: Antigen (50 ng); Red line:Antigen (100 ng)



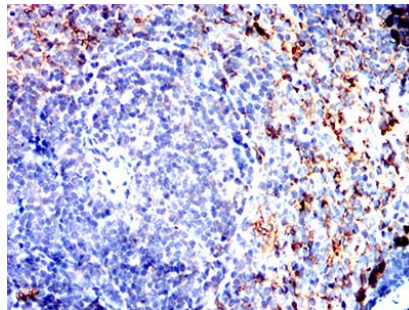
Flow cytometric analysis of HeLa cells using S100A4 mouse mAb (green) and negative control (red).



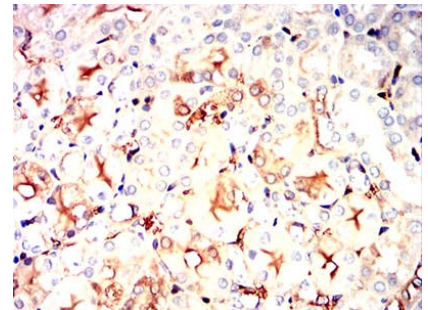
Immunohistochemical analysis of paraffin-embedded human cervical cancer tissues using S100A4 mouse mAb with DAB staining.



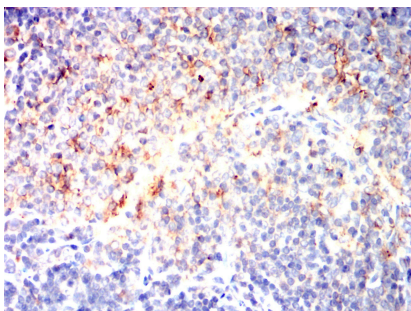
Immunohistochemical analysis of paraffin-embedded human brain tissues using S100A4 mouse mAb with DAB staining.



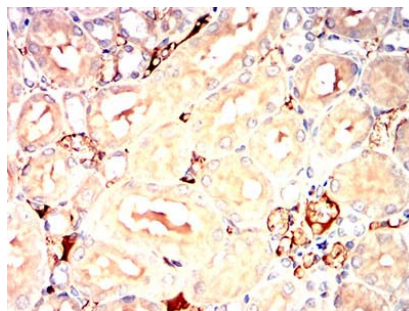
Immunohistochemical analysis of paraffin-embedded mouse spleen tissues using S100A4 mouse mAb with DAB staining.



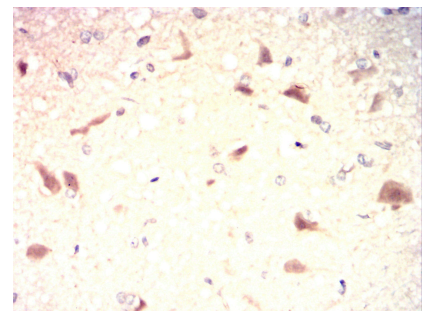
Immunohistochemical analysis of paraffin-embedded mouse kidney tissues using S100A4 mouse mAb with DAB staining.



Immunohistochemical analysis of paraffin-embedded rat spleen tissues using S100A4 mouse mAb with DAB staining.



Immunohistochemical analysis of paraffin-embedded rat kidney tissues using S100A4 mouse mAb with DAB staining.

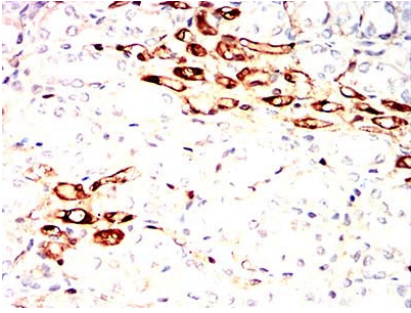


Immunohistochemical analysis of paraffin-embedded rabbit brain tissues using S100A4 mouse mAb with DAB staining.

For Research Only

Application Key:WB - Western Blot | IHC - Immunohistochemistry | ICC - Immunocytochemistry | FCM - Flow Cytometry | ELISA - Enzyme-linked Immunosorbent Assay | IP - Immunoprecipitation

#32405



Immunohistochemical analysis of paraffin-embedded rabbit kidney tissues using S100A4 mouse mAb with DAB staining.

For Research Only

Application Key:WB - Western Blot | IHC - Immunohistochemistry | ICC - Immunocytochemistry | FCM - Flow Cytometry | ELISA - Enzyme-linked Immunosorbent Assay | IP - Immunoprecipitation

#32405