

Mouse Monoclonal Antibody to PDHA1

Order Information

Catalog#	32407	
Size/Concentration	100µl	50µl
Price(¥)	2180	1280

Description

The pyruvate dehydrogenase (PDH) complex is a nuclear-encoded mitochondrial multienzyme complex that catalyzes the overall conversion of pyruvate to acetyl-CoA and CO(2), and provides the primary link between glycolysis and the tricarboxylic acid (TCA) cycle. The PDH complex is composed of multiple copies of three enzymatic components: pyruvate dehydrogenase (E1), dihydrolipoamide acetyltransferase (E2) and lipoamide dehydrogenase (E3). The E1 enzyme is a heterotetramer of two alpha and two beta subunits. This gene encodes the E1 alpha 1 subunit containing the E1 active site, and plays a key role in the function of the PDH complex. Mutations in this gene are associated with pyruvate dehydrogenase E1-alpha deficiency and X-linked Leigh syndrome. Alternatively spliced transcript variants encoding different isoforms have been found for this gene.

Specification

Aliases : PDHA; PDHAD; PHE1A; PDHCE1A

Entrez GeneID : 5160

Swissprot : P08559

clone : 2A2H7

WB Predicted band size : 43.3kDa

Host/Isotype : Mouse IgG2b

Storage : Store at 4°C short term. Aliquot and store at -20°C long term. Avoid freeze/thaw cycles.

Species Reactivity : Human

Immunogen : Purified recombinant fragment of human PDHA1 (AA: 241-390) expressed in E. Coli.

Formulation : Purified antibody in PBS with 0.05% sodium azide

Application

WB	1/500 - 1/2000
FCM	1/200 - 1/400
ELISA	1/10000

References

- 1.Eur J Paediatr Neurol. 2021 Mar;31:27-30.
- 2.Pathol Res Pract. 2019 Mar;215(3):478-482.

Call 1-510-860-4615
+86-19375157864
Email Info@ProMab.com
Web www.ProMab.com
www.ProMab.cn

Protocol

WB - www.promab.com/protocol/wb.html
IHC - www.promab.com/protocol/ihc.html
ICC - www.promab.com/protocol/icc.html
HCM - www.promab.com/protocol/hcm.html

Antigen Sequence is available upon request.

Products and Services

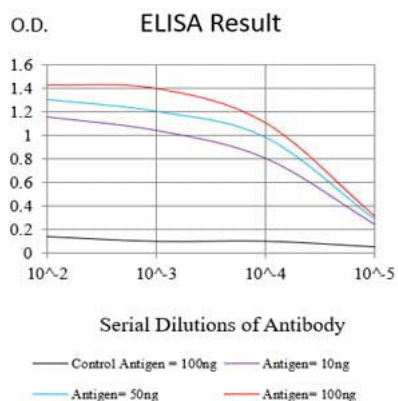
- Mouse Monoclonal Antibody
- Rat Monoclonal Antibody
- Human Antibody
- Hybridoma Sequencing
- Polyclonal Antibody

For Research Only

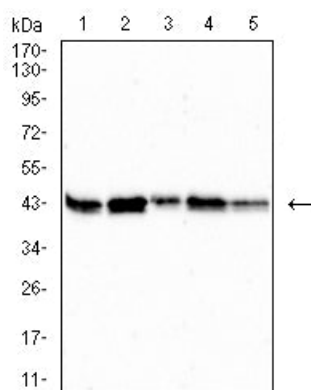
Application Key:WB - Western Blot | IHC - Immunohistochemistry | ICC - Immunocytochemistry | FCM - Flow Cytometry | ELISA - Enzyme-linked Immunosorbent Assay | IP - Immunoprecipitation

#32407

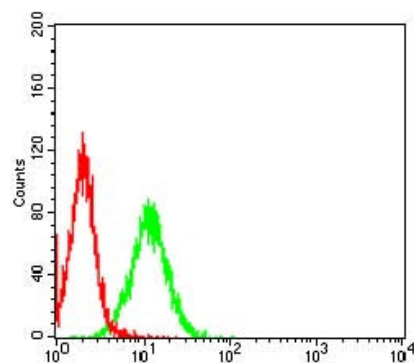
Mouse Monoclonal Antibody to PDHA1



Black line: Control Antigen (100 ng); Purple line: Antigen (10ng); Blue line: Antigen (50 ng); Red line: Antigen (100 ng)



Western blot analysis using PDHA1 mouse mAb against HepG2 (1), HL-60 (2), SK-OV-3 (3), PC-3 (4) and PANC-1 (5) cell lysate.



Flow cytometric analysis of HeLa cells using PDHA1 mouse mAb (green) and negative control (red).

For Research Only

Application Key: WB - Western Blot | IHC - Immunohistochemistry | ICC - Immunocytochemistry | FCM - Flow Cytometry | ELISA - Enzyme-linked Immunosorbent Assay | IP - Immunoprecipitation

#32407