

Mouse Monoclonal Antibody to His Tag

Order Information

Catalog#	32442	
Size/Concentration	100µl	50µl
Price(¥)	1320	780

Description

The 6 X histidine motif is used as a tag on many recombinant proteins to facilitate purification. It can then be purified using immobilized metal ions, traditionally nickel, in a procedure termed immobilized-metal affinity chromatography. Further analysis of the protein can be achieved using an antibody specific to the 6 X histidine in techniques such as western blotting. The antibody recognizes the His-tag fused to targeted proteins in transfected or transformed cells.

Specification

Aliases : 6 His tag; HHHHHH tag

clone : 6A8H8

Host/Isotype : Mouse IgG1

Antibody Type : Tag Antibody

Storage : Store at 4°C short term. Aliquot and store at -20°C long term. Avoid freeze/thaw cycles.

Species Reactivity : Tag

Immunogen : Synthesized peptide of His Tag (AA: HHHHHHHH-KLH).

Formulation : Purified antibody in PBS with 0.05% sodium azide

Application

WB	1/500-1/1000
IHC	1/100 - 1/1000
ICC	1/100 - 1/1000
FCM	1/200 - 1/400
ELISA	1/10000

Call 1-510-860-4615
+86-19375157864
Email Info@ProMab.com
Web www.ProMab.com
www.ProMab.cn

Protocol

WB - www.promab.com/protocol/wb.html
IHC - www.promab.com/protocol/ihc.html
ICC - www.promab.com/protocol/icc.html
HCM - www.promab.com/protocol/hcm.html

Antigen Sequence is available upon request.

Products and Services

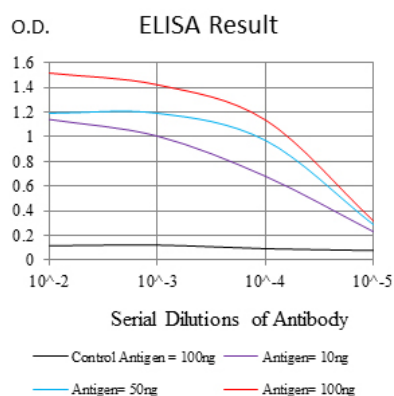
- Mouse Monoclonal Antibody
- Rat Monoclonal Antibody
- Human Antibody
- Hybridoma Sequencing
- Polyclonal Antibody

For Research Only

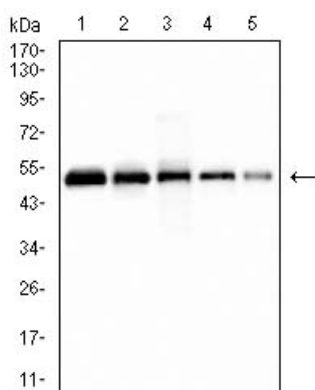
Application Key: WB - Western Blot | IHC - Immunohistochemistry | ICC - Immunocytochemistry | FCM - Flow Cytometry | ELISA - Enzyme-linked Immunosorbent Assay | IP - Immunoprecipitation

#32442

Mouse Monoclonal Antibody to His Tag



Red: Control Antigen (100ng) Purple:
Antigen (10ng), Green: Antigen (50ng) Blue:
Antigen (100ng),



Western blot analysis using His tag mAb
against recombinant protein. lane 1 :(100
ng); lane 2 :(50 ng); lane 3 :(25 ng); lane 4
:(10 ng); lane 5 :(2.5 ng); (Expected MW is
50 kDa).

For Research Only

Application Key:WB - Western Blot | IHC - Immunohistochemistry | ICC - Immunocytochemistry | FCM -
Flow Cytometry | ELISA - Enzyme-linked Immunosorbent Assay | IP - Immunoprecipitation

#32442