

# Mouse Monoclonal Antibody to ATP

## Order Information

Catalog#	90008	
Size/Concentration	100µl	50µl
Price(¥)	2180	1280

## Description

This gene encodes a subunit of mitochondrial ATP synthase. Mitochondrial ATP synthase catalyzes ATP synthesis, using an electrochemical gradient of protons across the inner membrane during oxidative phosphorylation. ATP synthase is composed of two linked multi-subunit complexes: the soluble catalytic core, F<sub>1</sub>, and the membrane-spanning component, F<sub>o</sub>, comprising the proton channel. The catalytic portion of mitochondrial ATP synthase consists of 5 different subunits (alpha, beta, gamma, delta, and epsilon) assembled with a stoichiometry of 3 alpha, 3 beta, and a single representative of the other 3. The proton channel consists of three main subunits (a, b, c). This gene encodes the alpha subunit of the catalytic core. Alternatively spliced transcript variants encoding the different isoforms have been identified. Pseudogenes of this gene are located on chromosomes 9, 2, and 16. [provided by RefSeq, Mar 2012]

## Specification

Aliases : OMR; ORM; ATPM; MOM2; ATP5A; hATP1; ATP5A1; MC5DN4; ATP5AL2; COXPD22; HEL-S-123m  
 Entrez GeneID : 498  
 clone : 2C2B11  
 WB Predicted band size : 59.7kDa  
 Host/Isotype : Mouse IgG1  
 Storage : Store at 4°C short term. Aliquot and store at -20°C long term. Avoid freeze/thaw cycles.  
 Species Reactivity : Human  
 Immunogen : Purified recombinant fragment of human \*\*\* (AA: 44-220) expressed in E. Coli.  
 Formulation : Purified antibody in PBS with 0.05% sodium azide

## Application

FCM	1/200 - 1/400
ELISA	1/10000

## References

- 1, Oncol Rep. 2018 Feb;39(2):525-536.
- 2, Oxid Med Cell Longev. 2018 Nov 14;2018:1347174.

Call 1-510-860-4615  
 +86-19375157864  
 Email Info@ProMab.com  
 Web www.ProMab.com  
 www.ProMab.cn

## Protocol

WB - [www.promab.com/protocol/wb.html](http://www.promab.com/protocol/wb.html)  
 IHC - [www.promab.com/protocol/ihc.html](http://www.promab.com/protocol/ihc.html)  
 ICC - [www.promab.com/protocol/icc.html](http://www.promab.com/protocol/icc.html)  
 HCM - [www.promab.com/protocol/hcm.html](http://www.promab.com/protocol/hcm.html)

**Antigen Sequence** is available upon request.

## Products and Services

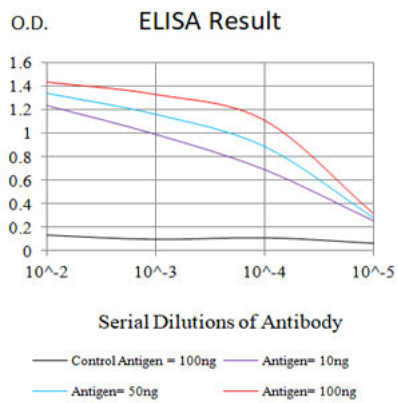
- Mouse Monoclonal Antibody
- Rat Monoclonal Antibody
- Human Antibody
- Hybridoma Sequencing
- Polyclonal Antibody

**For Research Only**

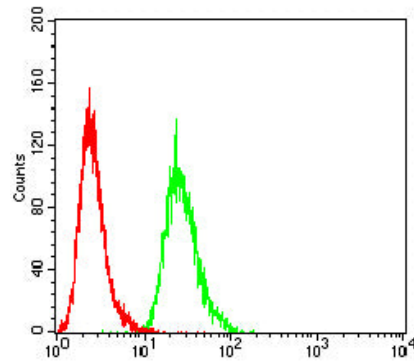
**Application Key:** WB - Western Blot | IHC - Immunohistochemistry | ICC - Immunocytochemistry | FCM - Flow Cytometry | ELISA - Enzyme-linked Immunosorbent Assay | IP - Immunoprecipitation

# #90008

# Mouse Monoclonal Antibody to ATP



Black line: Control Antigen (100 ng);Purple line: Antigen (10ng); Blue line: Antigen (50 ng); Red line:Antigen (100 ng)



Flow cytometric analysis of Hela cells using ATP mouse mAb (green) and negative control (red).

**For Research Only**

**Application Key:**WB - Western Blot | IHC - Immunohistochemistry | ICC - Immunocytochemistry | FCM - Flow Cytometry | ELISA - Enzyme-linked Immunosorbent Assay | IP - Immunoprecipitation

#90008