

# Mouse Monoclonal Antibody to HIF2a

## Order Information

Catalog#	90011	
Size/Concentration	100µl	50µl
Price(¥)	2180	1280

## Description

This gene encodes a transcription factor involved in the induction of genes regulated by oxygen, which is induced as oxygen levels fall. The encoded protein contains a basic-helix-loop-helix domain protein dimerization domain as well as a domain found in proteins in signal transduction pathways which respond to oxygen levels. Mutations in this gene are associated with erythrocytosis familial type 4. [provided by RefSeq, Nov 2009]

## Specification

Aliases : HLF; MOP2; ECTY4; HIF2A; PASD2; bHLHe73  
 Entrez GeneID : 2034  
 Swissprot : Q99814  
 clone : 1H3E12  
 WB Predicted band size : 96.5kDa  
 Host/Isotype : Mouse IgG1  
 Storage : Store at 4°C short term. Aliquot and store at -20°C long term. Avoid freeze/thaw cycles.  
 Species Reactivity : Human  
 Immunogen : Purified recombinant fragment of human HIF2a (AA: 680-870) expressed in E. Coli.  
 Formulation : Purified antibody in PBS with 0.05% sodium azide

## Application

IHC	1/200 - 1/1000
ICC	1/200 - 1/1000
FCM	1/200 - 1/400
ELISA	1/10000

## References

- 1, Nat Commun. 2020 Oct 6;11(1):5023.
- 2, Blood Cells Mol Dis. 2020 Sep;84:102446.

Call 1-510-860-4615  
 +86-19375157864  
 Email Info@ProMab.com  
 Web www.ProMab.com  
 www.ProMab.cn

## Protocol

WB - [www.promab.com/protocol/wb.html](http://www.promab.com/protocol/wb.html)  
 IHC - [www.promab.com/protocol/ihc.html](http://www.promab.com/protocol/ihc.html)  
 ICC - [www.promab.com/protocol/icc.html](http://www.promab.com/protocol/icc.html)  
 HCM - [www.promab.com/protocol/hcm.html](http://www.promab.com/protocol/hcm.html)  
**Antigen Sequence** is available upon request.

## Products and Services

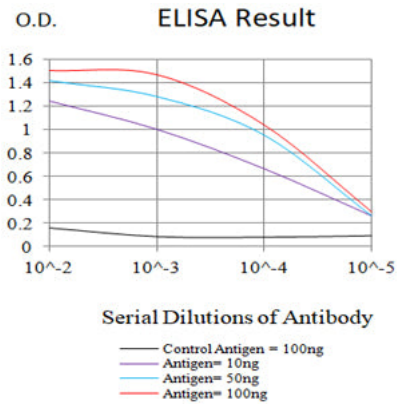
- Mouse Monoclonal Antibody
- Rat Monoclonal Antibody
- Human Antibody
- Hybridoma Sequencing
- Polyclonal Antibody

**For Research Only**

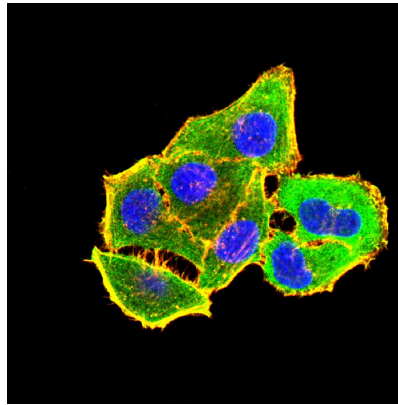
**Application Key:** WB - Western Blot | IHC - Immunohistochemistry | ICC - Immunocytochemistry | FCM - Flow Cytometry | ELISA - Enzyme-linked Immunosorbent Assay | IP - Immunoprecipitation

# #90011

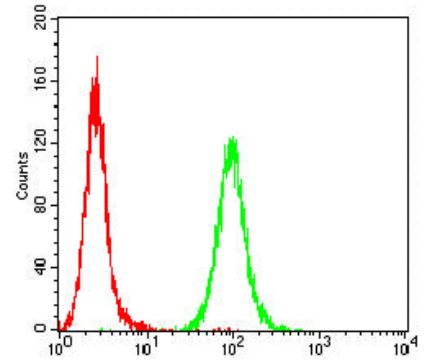
# Mouse Monoclonal Antibody to HIF2a



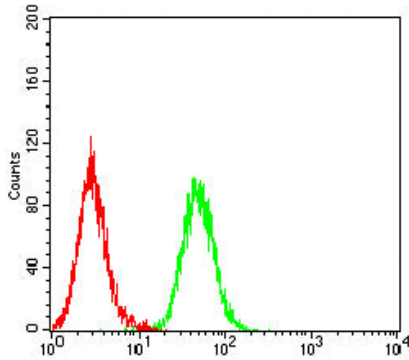
Black line: Control Antigen (100 ng); Purple line: Antigen (10ng); Blue line: Antigen (50 ng); Red line: Antigen (100 ng)



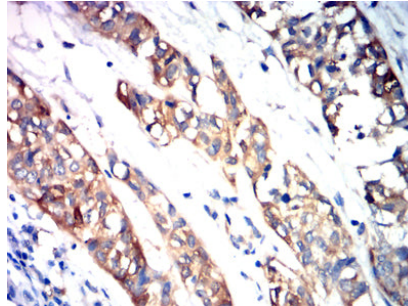
Immunofluorescence analysis of HeLa cells using HIF2a mouse mAb (green). Blue: DRAQ5 fluorescent DNA dye. Red: Actin filaments have been labeled with Alexa Fluor- 555 phalloidin. Secondary antibody from Fisher (Cat#: 35503)



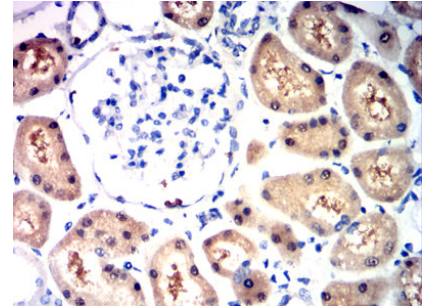
Flow cytometric analysis of HeLa cells using HIF2a mouse mAb (green) and negative control (red).



Flow cytometric analysis of HepG2 cells using HIF2a mouse mAb (green) and negative control (red).



Immunohistochemical analysis of paraffin-embedded human bladder cancer tissues using HIF2a mouse mAb with DAB staining.



Immunohistochemical analysis of paraffin-embedded human kidney tissues using HIF2a mouse mAb with DAB staining.

**For Research Only**

**Application Key:** WB - Western Blot | IHC - Immunohistochemistry | ICC - Immunocytochemistry | FCM - Flow Cytometry | ELISA - Enzyme-linked Immunosorbent Assay | IP - Immunoprecipitation

#90011