

# Rabbit Polyclonal Antibody to 6×His Tag

## Order Information

Catalog#	P00002	
Size/Concentration	100µl	50µl
Price(¥)	1980	1180

## Description

The 6 X histidine motif is used as a tag on many recombinant proteins to facilitate purification. It can then be purified using immobilized metal ions, traditionally nickel, in a procedure termed immobilized-metal affinity chromatography. Further analysis of the protein can be achieved using an antibody specific to the 6 X histidine in techniques such as western blotting. The antibody recognizes the His-tag fused to targeted proteins in transfected or transformed cells.

## Specification

Aliases : 6 His epitope tag

WB Predicted band size : 50/44 kDa

Host/Isotype : Rabbit IgG

Storage : Store at 4°C short term. Aliquot and store at -20°C long term. Avoid freeze/thaw cycles.

Species Reactivity : Fusion proteins containing the HIS Tag

Immunogen : Synthetic peptide: 18×His conjugated to KLH

Formulation : pH7.4 PBS, 0.05% Na<sub>3</sub>N, 40% Glycerol

## Application

WB	1/2000-1/10000
ELISA	1/5000-1/10000

Call 1-510-860-4615  
+86-19375157864  
Email [Info@ProMab.com](mailto:Info@ProMab.com)  
Web [www.ProMab.com](http://www.ProMab.com)  
[www.ProMab.cn](http://www.ProMab.cn)

## Protocol

WB - [www.promab.com/protocol/wb.html](http://www.promab.com/protocol/wb.html)  
IHC - [www.promab.com/protocol/ihc.html](http://www.promab.com/protocol/ihc.html)  
ICC - [www.promab.com/protocol/icc.html](http://www.promab.com/protocol/icc.html)  
HCM - [www.promab.com/protocol/hcm.html](http://www.promab.com/protocol/hcm.html)

**Antigen Sequence** is available upon request.

## Products and Services

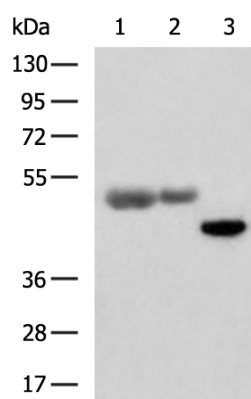
- Mouse Monoclonal Antibody
- Rat Monoclonal Antibody
- Human Antibody
- Hybridoma Sequencing
- Polyclonal Antibody

**For Research Only**

**Application Key:** WB - Western Blot | IHC - Immunohistochemistry | ICC - Immunocytochemistry | FCM - Flow Cytometry | ELISA - Enzyme-linked Immunosorbent Assay | IP - Immunoprecipitation

# #P00002

## Rabbit Polyclonal Antibody to 6×His Tag



Gel: 8%SDS-PAGE, Lysate: 1/0.5/0.5 µg,  
Lane 1-3: Two fusion protein containing the  
HIS Tag, Primary antibody: P00002(6×His  
Tag Antibody) at dilution 1/1000, Secondary  
antibody: Goat anti rabbit IgG at 1/5000  
dilution, Exposure time: 3 seconds

**For Research Only**

**Application Key:**WB - Western Blot | IHC - Immunohistochemistry | ICC - Immunocytochemistry | FCM -  
Flow Cytometry | ELISA - Enzyme-linked Immunosorbent Assay | IP - Immunoprecipitation

**#P00002**