

Rabbit Polyclonal Antibody to HA Tag

Order Information

Catalog#	P00004	
Size/Concentration	100µl	50µl
Price(¥)	1980	1180

Description

Human influenza hemagglutinin (HA) is a surface glycoprotein required for the infectivity of the human virus. The HA tag is derived from the HA-molecule corresponding to amino acids 98-106 has been extensively used as a general epitope tag in expression vectors. Many recombinant proteins have been engineered to express the HA tag, which does not appear to interfere with the bioactivity or the biodistribution of the recombinant protein. This tag facilitates the detection, isolation, and purification of the proteins.

Specification

Aliases : HA epitope tag, Hemagglutinin Tag

WB Predicted band size : 50 kDa

Host/Isotype : Rabbit IgG

Storage : Store at 4°C short term. Aliquot and store at -20°C long term. Avoid freeze/thaw cycles.

Species Reactivity : Fusion proteins containing the HA Tag

Immunogen : Synthetic peptide: YPYDVPDYA conjugated to KLH.

Formulation : pH7.4 PBS, 0.05% NaN3, 40% Glycerol

Application

WB	1/5000-1/20000
ELISA	1/5000-1/10000

Call 1-510-860-4615
+86-19375157864
Email Info@ProMab.com
Web www.ProMab.com
www.ProMab.cn

Protocol

WB - www.promab.com/protocol/wb.html
IHC - www.promab.com/protocol/ihc.html
ICC - www.promab.com/protocol/icc.html
HCM - www.promab.com/protocol/hcm.html

Antigen Sequence is available upon request.

Products and Services

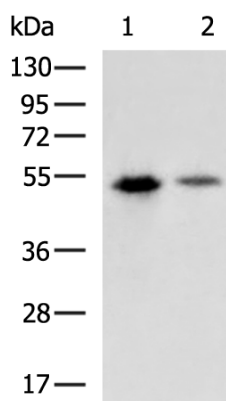
- Mouse Monoclonal Antibody
- Rat Monoclonal Antibody
- Human Antibody
- Hybridoma Sequencing
- Polyclonal Antibody

For Research Only

Application Key:WB - Western Blot | IHC - Immunohistochemistry | ICC - Immunocytochemistry | FCM - Flow Cytometry | ELISA - Enzyme-linked Immunosorbent Assay | IP - Immunoprecipitation

#P00004

Rabbit Polyclonal Antibody to HA Tag



Gel: 8%SDS-PAGE, Lysate: 1/0.5 μ g, Lane
1-2: Fusion proteins containing the HA Tag,
Primary antibody: P00004(HA Tag
Antibody) at dilution 1/4000, Secondary
antibody: Goat anti rabbit IgG at 1/5000
dilution, Exposure time: 5 seconds

For Research Only

Application Key: WB - Western Blot | IHC - Immunohistochemistry | ICC - Immunocytochemistry | FCM -
Flow Cytometry | ELISA - Enzyme-linked Immunosorbent Assay | IP - Immunoprecipitation

#P00004