

# Rabbit Polyclonal Antibody to DANRE atg4b (N-term)

## Order Information

Catalog#	P34232	
Size/Concentration	100µl	50µl
Price(¥)	1980	1180

## Description

Cysteine protease required for autophagy, which is able to cleave the C-terminal part of proteins that may be subsequently converted to a smaller form, with a revealed C-terminal glycine, considered to be the phosphatidylethanolamine (PE)-conjugated form. This conjugated form has the capacity for the binding to autophagosomes (By similarity).

## Specification

Aliases : Cysteine protease ATG4B, 3422-, Autophagy-related protein 4 homolog B, atg4b, apg4b

Swissprot : Q6DG88

WB Predicted band size : 44.5kDa

Host/Isotype : Rabbit IgG

Antibody Type : Primary antibody

Storage : Store at 4°C short term. Aliquot and store at -20°C long term. Avoid freeze/thaw cycles.

Species Reactivity : Human, Mouse, zebrafish,

Immunogen : This DANRE atg4b antibody is generated from rabbits immunized with a KLH conjugated synthetic peptide between 1-30 amino acids from the N-terminal region of DANRE atg4b.

Formulation : Purified polyclonal antibody supplied in PBS with 0.05% sodium azide. This antibody is purified through a protein A column, followed by peptide affinity purification.

## Application

WB	1/1000
----	--------

Call 1-510-860-4615  
+86-19375157864  
Email [Info@ProMab.com](mailto:Info@ProMab.com)  
Web [www.ProMab.com](http://www.ProMab.com)  
[www.ProMab.cn](http://www.ProMab.cn)

## Protocol

WB - [www.promab.com/protocol/wb.html](http://www.promab.com/protocol/wb.html)  
IHC - [www.promab.com/protocol/ihc.html](http://www.promab.com/protocol/ihc.html)  
ICC - [www.promab.com/protocol/icc.html](http://www.promab.com/protocol/icc.html)  
HCM - [www.promab.com/protocol/hcm.html](http://www.promab.com/protocol/hcm.html)

**Antigen Sequence** is available upon request.

## Products and Services

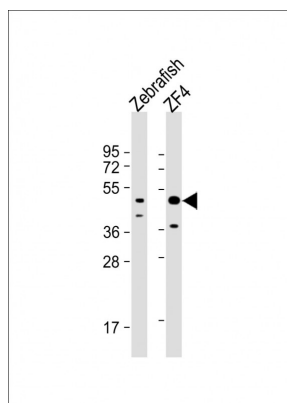
- Mouse Monoclonal Antibody
- Rat Monoclonal Antibody
- Human Antibody
- Hybridoma Sequencing
- Polyclonal Antibody

**For Research Only**

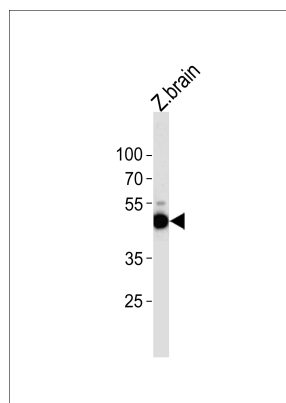
**Application Key:** WB - Western Blot | IHC - Immunohistochemistry | ICC - Immunocytochemistry | FCM - Flow Cytometry | ELISA - Enzyme-linked Immunosorbent Assay | IP - Immunoprecipitation

# #P34232

## Rabbit Polyclonal Antibody to DANRE atg4b (N-term)



All lanes : Anti-(DANRE) atg4b Antibody (N-term) at 1:1000 dilution  
Lane 1: Zebrafish lysate  
Lane 2: ZF4 whole cell lysate  
Lysates/proteins at 20 µg per lane.  
Secondary Goat Anti-Rabbit IgG, (H+L), Peroxidase conjugated at 1/10000 dilution.  
Predicted band size : 44 kDa  
Blocking/Dilution buffer: 5% NFDM/TBST.



DANRE atg4b Antibody (N-term) (Cat. #P34232) western blot analysis in zebrafish brain tissue lysates (35ug/lane). This demonstrates the DANRE atg4b antibody detected the DANRE atg4b protein (arrow).

**For Research Only**

**Application Key:** WB - Western Blot | IHC - Immunohistochemistry | ICC - Immunocytochemistry | FCM - Flow Cytometry | ELISA - Enzyme-linked Immunosorbent Assay | IP - Immunoprecipitation

**#P34232**